

Nur für Forschungszwecke

calreticulin Polyklonaler Antikörper

Katalog-Nr.: 10292-1-AP

Vorgestelltes Produkt

55 Publikationen



Allgemeine Informationen

Katalog-Nr.: 10292-1-AP	GenBank-Zugangsnummer: BC002500	Reinigungsmethode: Antigen-Affinitätsreinigung
Größe: 150ul, Konzentration: 400 µg/ml von Nanodrop;	GeneID (NCBI): 811	Empfohlene Verdünnungen: WB 1:500-1:2000 IHC 1:50-1:500
Wirt: Kaninchen	Vollständiger Name: calreticulin	
Isotyp: IgG	Berechnete Masse: 60 kDa	
Immunogen Katalognummer: AG0325	Beobachtete Masse: 55 kDa	

Anwendungen

Geprüfte Anwendungen:

FC, IHC, WB, ELISA

In Publikationen genannte Anwendungen:

Cell treatment, FC, IHC, WB

Getestete Reaktivität:

Human, Maus, Ratte

Zitierte Arten:

Human, Maus, Ratte

Hinweis-IHC: Antigenmaskierung mit TE-Puffer pH 9,0 empfohlen. (*) Wahlweise kann die Antigenmaskierung auch mit Citratpuffer pH 6,0 erfolgen.

Positivkontrollen:

WB: HL-60-Zellen, A549-Zellen, COLO 320-Zellen, HeLa-Zellen, HepG2-Zellen, humanes Skelettmuskelgewebe, Maushirngewebe, MCF-7-Zellen, NIH/3T3-Zellen, Rattenhirngewebe, SH-SY5Y-Zellen

IHC: humanes Schilddrüsengewebe, humanes Skelettmuskelgewebe

Hintergrundinformationen

CALR, also named as grp60, ERp60, HACBP, CRP55, CRTC and Calregulin, belongs to the calreticulin family. It is a molecular calcium-binding chaperone promoting folding, oligomeric assembly and quality control in the ER via the calreticulin/calnexin cycle. CALR is a ER marker. It interacts transiently with almost all of the monoglucosylated glycoproteins that are synthesized in the ER. CALR interacts with the DNA-binding domain of NR3C1 and mediates its nuclear export. The MW of CALR migrates aberrantly at 55 kDa by SDS-PAGE. Some study provided that it's a new possibility for CRT-mediated tumor immune prevention and treatment.

Bemerkenswerte Veröffentlichungen

Verfasser	Pubmed ID	Journal	Anwendung
Lihua Luo	34593005	J Nanobiotechnology	WB
Xuan Wang	36167857	Nat Commun	WB
Yezi Chen	36105615	Int J Nanomedicine	IF

Lagerung

Lagerungsbedingungen:

Bei -20°C lagern. Nach dem Versand ein Jahr lang stabil

Lagerungspuffer:

PBS mit 0.02% Natriumazid und 50% Glycerin pH 7.3.

Aliquotieren ist nicht notwendig bei -20°C Lagerung

*** 20ul-Größen enthalten 0.1% BSA

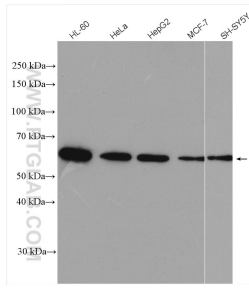
For technical support and original validation data for this product please contact:

T: 1 (888) 4PTGLAB (1-888-478-4522) (toll free in USA), or 1(312) 455-8498 (outside USA)

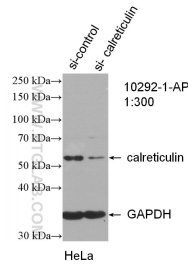
E: proteintech@ptglab.com
W: ptglab.com

This product is exclusively available under Proteintech Group brand and is not available to purchase from any other manufacturer.

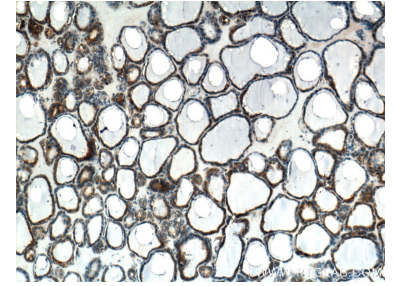
Ausgewählte Validierungsdaten



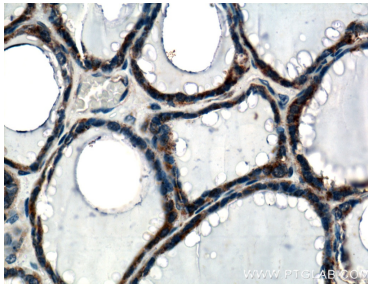
Various lysates were subjected to SDS PAGE followed by western blot with 10292-1-AP (calreticulin antibody) at dilution of 1:1000 incubated at room temperature for 1.5 hours.



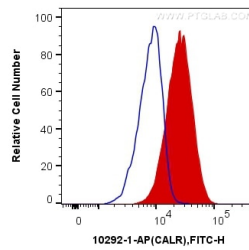
WB result of calreticulin antibody (10292-1-AP; 1:300; incubated at room temperature for 1.5 hours) with sh-Control and sh-calreticulin transfected HeLa cells.



Immunohistochemical analysis of paraffin-embedded human thyroid tissue slide using 10292-1-AP (calreticulin Antibody) at dilution of 1:200 (under 10x lens).



Immunohistochemical analysis of paraffin-embedded human thyroid tissue slide using 10292-1-AP (calreticulin Antibody) at dilution of 1:200 (under 40x lens).



1X10⁶ Jurkat cells were intracellularly stained with 0.4 ug Anti-Human calreticulin (10292-1-AP) and CoraLite®488-Conjugated AffiniPure Goat Anti-Rabbit IgG(H+L) at dilution 1:1000 (red), or 0.4 ug Control Antibody. Cells were fixed with 4% PFA and permeabilized with Flow Cytometry Perm Buffer (PF00011-C).