

Nur für Forschungszwecke

Lamin A/C Polyklonaler Antikörper

Katalog-Nr.: 10298-1-AP

Vorgestelltes Produkt

163 Publikationen



Allgemeine Informationen

Katalog-Nr.: 10298-1-AP	GenBank-Zugangsnummer: BC003162	Reinigungsmethode: Antigen-Affinitätsreinigung
Größe: 150ul, Konzentration: 700 µg/ml von Nanodrop;	GeneID (NCBI): 4000	Empfohlene Verdünnungen: WB 1:5000-1:50000
Wirt: Kaninchen	Vollständiger Name: lamin A/C	IP 0.5-4.0 µg für IP und 1:500-1:2000 für WB
Isotyp: IgG	Berechnete Masse: 65 kDa	IF 1:400-1:1600
Immunogen Katalognummer: AG0408	Beobachtete Masse: 65 kDa, 70 kDa	

Anwendungen

Geprüfte Anwendungen: FC, IF, IP, WB, ELISA	Positivkontrollen:
In Publikationen genannte Anwendungen: IF, IHC, IP, WB	WB: A431-Zellen, A375-Zellen, C6-Zellen, HEK-293-Zellen, HeLa-Zellen, HUVEC-Zellen, Maus-Eierstockgewebe, NIH/3T3-Zellen, SKOV-3-Zellen
Getestete Reaktivität: Human, Maus, Ratte	IP: A375-Zellen,
Zitierte Arten: Affe, Ente, Human, Maus, Ratte	IF: HepG2-Zellen, HeLa-Zellen

Hintergrundinformationen

Lamin A/C is also named as LMNA, or LMN1. The lamin family of proteins make up the matrix and are highly conserved in evolution. During mitosis, the lamina matrix is reversibly disassembled as the lamin proteins are phosphorylated. Lamin proteins are thought to be involved in nuclear stability, chromatin structure and gene expression. The lack of lamin A/C can be as a novel marker for undifferentiated embryonic stem cells and lamin A/C expression is as an early indicator of differentiation (PMID: 16179429). Mutations in this gene lead to several diseases: Emery-Dreifuss muscular dystrophy, familial partial lipodystrophy, limb girdle muscular dystrophy, dilated cardiomyopathy, Charcot-Marie-Tooth disease, and Hutchinson-Gilford progeria syndrome. This protein has 4 isoforms produced by alternative splicing with the molecular weight of 74 kDa, 65 kDa, 70 kDa and 64 kDa. This antibody can recognize 4 isoforms of Lamin A/C.

Bemerkenswerte Veröffentlichungen

Verfasser	Pubmed ID	Journal	Anwendung
Qingyang Zhang	34551807	Mol Neurodegener	WB
Fengbo Tan	30218452	J Cell Biochem	WB
Yingjie Liu	34475402	Nat Commun	WB

Lagerung

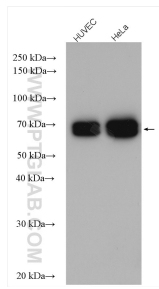
Lagerungsbedingungen:
Bei -20°C lagern. Nach dem Versand ein Jahr lang stabil
Lagerungspuffer:
PBS mit 0.02% Natriumazid und 50% Glycerin pH 7.3.
Aliquotieren ist nicht notwendig bei -20°C Lagerung

*** 20ul-Größen enthalten 0.1% BSA

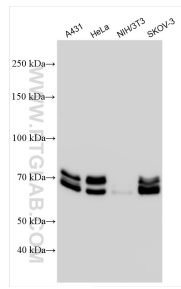
For technical support and original validation data for this product please contact:
T: 1 (888) 4PTGLAB (1-888-478-4522) (toll free in USA), or 1(312) 455-8498 (outside USA)
E: proteintech@ptglab.com
W: ptglab.com

This product is exclusively available under Proteintech Group brand and is not available to purchase from any other manufacturer.

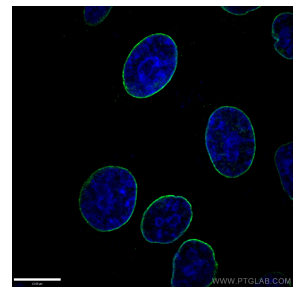
Ausgewählte Validierungsdaten



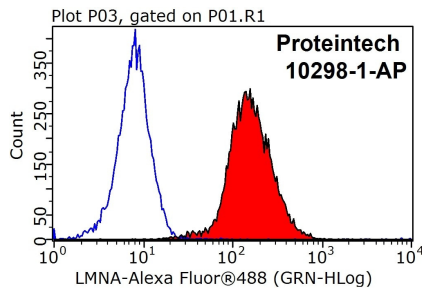
Various lysates were subjected to SDS PAGE followed by western blot with 10298-1-AP (Lamin A/C antibody) at dilution of 1:6000 incubated at room temperature for 1.5 hours.



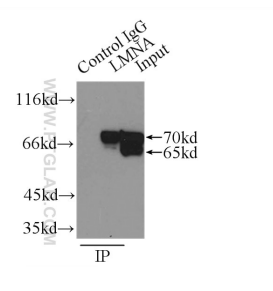
Various lysates were subjected to SDS PAGE followed by western blot with 10298-1-AP (Lamin A/C antibody) at dilution of 1:35000 incubated at room temperature for 1.5 hours.



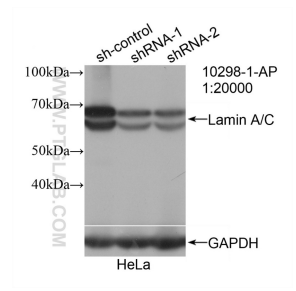
Immunofluorescent analysis of (-20°C Ethanol) fixed HepG2 cells using 10298-1-AP (Lamin A/C antibody) at dilution of 1:200 and Alexa Fluor 488-conjugated AffiniPure Goat Anti-Rabbit IgG(H+L).



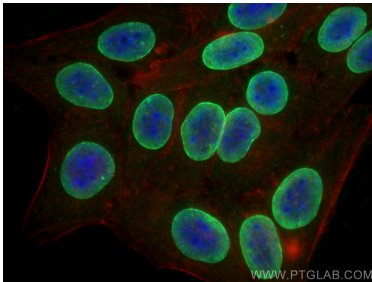
1X10⁶ HEK-293T cells were stained with 0.2ug Lamin A/C antibody (10298-1-AP, red) and control antibody (blue). Fixed with 90% MeOH blocked with 3% BSA (30 min). Alexa Fluor 488-conjugated AffiniPure Goat Anti-Rabbit IgG(H+L) with dilution 1:1000.



IP Result of anti-Lamin-A (IP:10298-1-AP, 3ug; Detection:10298-1-AP 1:1000) with A375 cells lysate 800ug.



WB result of Lamin A/C antibody (10298-1-AP; 1:20000; incubated at room temperature for 1.5 hours) with sh-Control and sh-Lamin A/C transfected HeLa cells.



Immunofluorescent analysis of (-20°C Ethanol) fixed HepG2 cells using Lamin A/C antibody (10298-1-AP) at dilution of 1:800 and CoraLite@488-Conjugated AffiniPure Goat Anti-Rabbit IgG(H+L), CL594-Phalloidin (red).