

Allgemeine Informationen

Katalog-Nr.: 10305-1-AP	GenBank-Zugangsnummer: BC002369	Reinigungsmethode: Antigen-Affinitätsreinigung
Größe: 150ul , Konzentration: 450 µg/ml von Nanodrop;	GeneID (NCBI): 5347	Empfohlene Verdünnungen: WB 1:500-1:2000 IHC 1:50-1:500
Wirt: Kaninchen	Vollständiger Name: polo-like kinase 1 (Drosophila)	
Isotyp: IgG	Berechnete Masse: 68 kDa	
Immunogen Katalognummer: AG0284	Beobachtete Masse: 62 kDa	

Anwendungen

Geprüfte Anwendungen:
FC (Intra), IHC, WB, ELISA

In Publikationen genannte Anwendungen:
IF, IP, WB

Getestete Reaktivität:
Human, Maus, Ratte

Zitierte Arten:
Human, Maus, Ratte

Hinweis-IHC: Antigenmaskierung mit TE-Puffer pH 9,0 empfohlen. (*) Wahlweise kann die Antigenmaskierung auch mit Citratpuffer pH 6,0 erfolgen.

Positivkontrollen:

WB : MDA-MB-453s-Zellen, A549-Zellen, HEK-293-Zellen, HeLa-Zellen, Maushodengewebe, Rattenhodengewebe, U2OS-Zellen

IHC : humanes Prostatakarzinomgewebe,

Hintergrundinformationen

PLK1(Polo-like kinase 1), also named as PLK and STPK13, belongs to the protein kinase superfamily, Ser/Thr protein kinase family and CDC5/Polo subfamily. PLK1 is a Serine/threonine-protein kinase that performs several important functions throughout M phase of the cell cycle, including the regulation of centrosome maturation and spindle assembly, the removal of cohesins from chromosome arms, the inactivation of APC/C inhibitors, and the regulation of mitotic exit and cytokinesis. The localization of Polo changes during the cell cycle. In interphase, Polo shows a mostly diffuse cytoplasmic localization. Polo becomes concentrated on centrosomes from early prophase and appears on centromeres or kinetochores from late prophase, before nuclear envelope breakdown (NEB). After anaphase onset, Polo relocates to the central spindle and remains enriched at the midbody ring in late stages of cytokinesis (PMID: 29167465).

Bemerkenswerte Veröffentlichungen

Verfasser	Pubmed ID	Journal	Anwendung
Rui Song	30405751	Oncol Lett	WB
Menghao Shi	30498349	Int J Nanomedicine	WB,IF
Bin Wang	36410162	Arch Oral Biol	WB

Lagerung

Lagerungsbedingungen:

Bei -20°C lagern. Nach dem Versand ein Jahr lang stabil

Lagerungspuffer:

PBS mit 0.02% Natriumazid und 50% Glycerin pH 7.3.

Aliquotieren ist nicht notwendig bei -20°C Lagerung

***** 20ul-Größen enthalten 0.1% BSA**

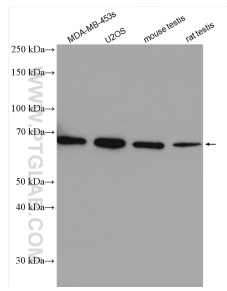
For technical support and original validation data for this product please contact:

T: 1 (888) 4PTGLAB (1-888-478-4522) (toll free in USA), or 1(312) 455-8498 (outside USA)

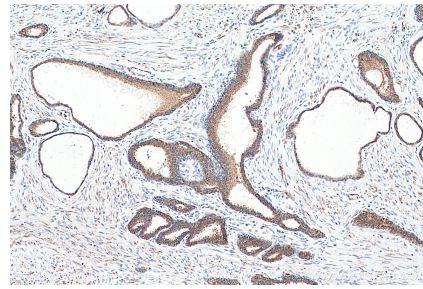
E: proteintech@ptglab.com
W: ptglab.com

This product is exclusively available under Proteintech Group brand and is not available to purchase from any other manufacturer.

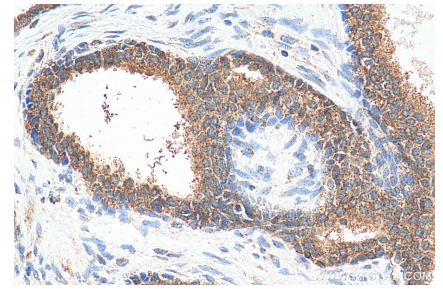
Ausgewählte Validierungsdaten



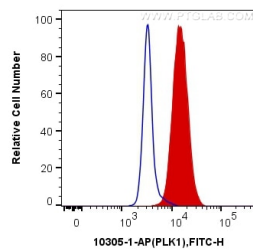
Various lysates were subjected to SDS PAGE followed by western blot with 10305-1-AP (PLK1 antibody) at dilution of 1:1000 incubated at room temperature for 1.5 hours.



Immunohistochemical analysis of paraffin-embedded human prostate cancer tissue slide using 10305-1-AP (PLK1 antibody) at dilution of 1:200 (under 10x lens). Heat mediated antigen retrieval with Tris-EDTA buffer (pH 9.0).



Immunohistochemical analysis of paraffin-embedded human prostate cancer tissue slide using 10305-1-AP (PLK1 antibody) at dilution of 1:200 (under 40x lens). Heat mediated antigen retrieval with Tris-EDTA buffer (pH 9.0).



1×10^6 HeLa cells were intracellularly stained with 0.4 μ g Anti-Human PLK1 (10305-1-AP) and CoraLite@488-Conjugated AffiniPure Goat Anti-Rabbit IgG(H+L) at dilution 1:1000 (red), or 0.4 μ g Control Antibody. Cells were fixed and permeabilized with Transcription Factor Staining Buffer Kit (PF00011).