

Nur für Forschungszwecke

B23/NPM1 Polyklonaler Antikörper

Katalog-Nr.:10306-1-AP

21 Publikationen



Allgemeine Informationen

Katalog-Nr.: 10306-1-AP	GenBank-Zugangsnummer: BC002398	Reinigungsmethode: Antigen-Affinitätsreinigung
Größe: 150ul, Konzentration: 500 µg/ml von Nanodrop;	GeneID (NCBI): 4869	Empfohlene Verdünnungen: WB 1:20000-1:100000 IP 0.5-4.0 ug für IP und 1:1000-1:4000 für WB
Wirt: Kaninchen	Vollständiger Name: nucleophosmin (nucleolar phosphoprotein B23, numatrin)	IHC 1:250-1:1000 IF 1:50-1:500
Isotyp: IgG	Berechnete Masse: 33 kDa	
Immunogen Katalognummer: AG0286	Beobachtete Masse: 35-40 kDa	

Anwendungen

Geprüfte Anwendungen:

IF, IHC, IP, WB, ELISA

In Publikationen genannte Anwendungen:

chIP, IF, IHC, IP, WB

Getestete Reaktivität:

Human, Ratte

Zitierte Arten:

Hausschwein, Human, Maus

Positivkontrollen:

WB: COLO 320-Zellen, HEK-293-Zellen, HeLa-Zellen, Jurkat-Zellen, K-562-Zellen, Multizellen

IP: Jurkat-Zellen,

IHC: humanes Kolonkarzinomgewebe, humanes Mammakarzinomgewebe

IF: HeLa-Zellen,

Hinweis-IHC: Antigenmaskierung mit TE-Puffer pH 9,0 empfohlen. (*) Wahlweise kann die Antigenmaskierung auch mit Citratpuffer pH 6,0 erfolgen.

Hintergrundinformationen

Nucleophosmin (NPM1,B23) is a putative ribosome assembly factor with a high affinity for peptides containing nuclear localization signals (NLSs). The transport of proteins across the nuclear envelope is a selective, multistep process involving several cytoplasmic factors. Proteins must be recognized as import substrates, dock at the nuclear pore complex and translocate across the nuclear envelope in an ATP-dependent fashion. Several cytosolic and nuclear proteins that are central to this process have been identified. The 38 kDa nuclear protein nucleophosmin is involved in ribosomal assembly and rRNA transport. It is an abundant protein that is highly phosphorylated by Cdc2 kinase during mitosis.

Bemerkenswerte Veröffentlichungen

Verfasser	Pubmed ID	Journal	Anwendung
Yinghua Zhao	36238596	Front Microbiol	IF
Zhen Ding	32944812	Virus Genes	IF
Masayuki Ide	31657521	EMBO Mol Med	

Lagerung

Lagerungsbedingungen:

Bei -20°C lagern. Nach dem Versand ein Jahr lang stabil

Lagerungspuffer:

PBS mit 0.02% Natriumazid und 50% Glycerin pH 7.3.

Aliquotieren ist nicht notwendig bei -20°C Lagerung

***** 20ul-Größen enthalten 0.1% BSA**

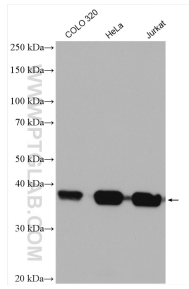
For technical support and original validation data for this product please contact:

T: 1 (888) 4PTGLAB (1-888-478-4522) (toll free in USA), or 1(312) 455-8498 (outside USA)

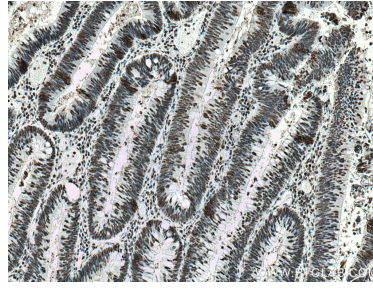
E: proteintech@ptglab.com
W: ptglab.com

This product is exclusively available under Proteintech Group brand and is not available to purchase from any other manufacturer.

Ausgewählte Validierungsdaten



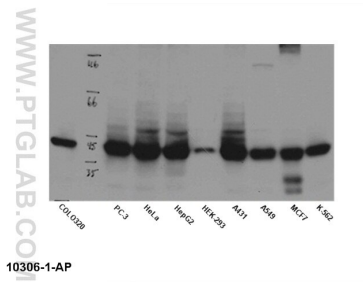
Various lysates were subjected to SDS PAGE followed by western blot with 10306-1-AP (B23/NPM1 antibody) at dilution of 1:50000 incubated at room temperature for 1.5 hours.



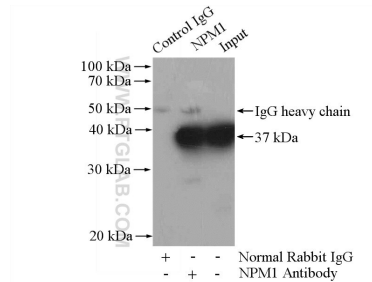
Immunohistochemical analysis of paraffin-embedded human colon cancer tissue slide using 10306-1-AP (B23/NPM1 antibody) at dilution of 1:500 (under 10x lens). Heat mediated antigen retrieval with Tris-EDTA buffer (pH 9.0).



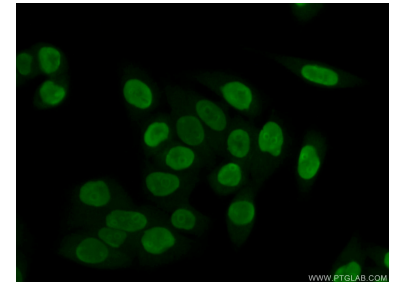
Immunohistochemical analysis of paraffin-embedded human colon cancer tissue slide using 10306-1-AP (B23/NPM1 antibody) at dilution of 1:500 (under 10x lens). Heat mediated antigen retrieval with Tris-EDTA buffer (pH 9.0).



WB result of anti-NPM1 (10306-1-AP) in different cell lysates.



IP Result of anti-B23 (IP:10306-1-AP, 4ug; Detection:10306-1-AP 1:2000) with Jurkat cells lysate 3200ug.



Immunofluorescent analysis of (4% PFA) fixed HeLa cells using 10306-1-AP (B23 antibody) at dilution of 1:50 and Alexa Fluor 488-conjugated AffiniPure Goat Anti-Rabbit IgG(H+L).