

Nur für Forschungszwecke

NXF1 Polyklonaler Antikörper

Katalog-Nr.:10328-1-AP

Vorgestelltes Produkt

9 Publikationen



Allgemeine Informationen

Katalog-Nr.:
10328-1-AP

Größe:
150ul, Konzentration: 500 µg/ml von
Nanodrop;

Wirt:
Kaninchen

Isotyp:
IgG

Immunogen Katalognummer:
AG0413

GenBank-Zugangsnummer:
BC004904

GeneID (NCBI):
10482

Vollständiger Name:
nuclear RNA export factor 1

Berechnete Masse:
70 kDa

Beobachtete Masse:
66-70 kDa

Reinigungsmethode:

Antigen-Affinitätsreinigung

Empfohlene Verdünnungen:

WB 1:500-1:1000
IP 0.5-4.0 µg für IP und 1:500-1:1000
für WB
IF 1:20-1:200

Anwendungen

Geprüfte Anwendungen:

IF, IP, WB, ELISA

In Publikationen genannte Anwendungen:

CoIP, IF, IP, WB

Getestete Reaktivität:

Human

Zitierte Arten:

Affe, Human, Maus

Positivkontrollen:

WB: HeLa-Zellen, HepG2-Zellen, K-562-Zellen

IP: HeLa-Zellen,

IF: HepG2-Zellen,

Hintergrundinformationen

Nuclear RNA export factor 1 (NXF1, synonyms: TAP, MEX67) is one member of a family of nuclear RNA export factors. Common domain features of this family are a noncanonical RNP-type RNA-binding domain (RBD), 4 leucine-rich repeats (LRRs), a nuclear transport factor 2 (NTF2)-like domain that allows heterodimerization with NTF2-related export protein-1 (NXT1), and a ubiquitin-associated domain that mediates interactions with nucleoporins. The LRRs and NTF2-like domains are required for export activity. This protein shuttles between the nucleus and the cytoplasm and binds in vivo to poly(A)⁺ RNA. It is the vertebrate homologue of the yeast protein Mex67p. NXF1 overcomes the mRNA export block caused by the presence of saturating amounts of CTE (constitutive transport element) RNA of type D retroviruses.

Bemerkenswerte Veröffentlichungen

Verfasser	Pubmed ID	Journal	Anwendung
Ke Wang	30194269	J Cell Biol	
Miao Chen	34793452	PLoS Genet	WB
Norihiro Okada	34082065	Gene	WB

Lagerung

Lagerungsbedingungen:

Bei -20°C lagern. Nach dem Versand ein Jahr lang stabil

Lagerungspuffer:

PBS mit 0.02% Natriumazid und 50% Glycerin pH 7.3.

Aliquotieren ist nicht notwendig bei -20°C Lagerung

*** 20ul-Größen enthalten 0.1% BSA

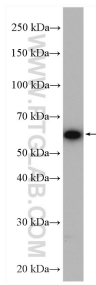
For technical support and original validation data for this product please contact:

T: 1 (888) 4PTGLAB (1-888-478-4522) (toll free
in USA), or 1(312) 455-8498 (outside USA)

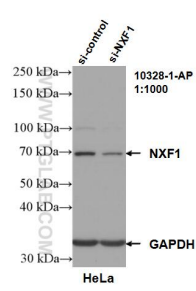
E: proteintech@ptglab.com
W: ptglab.com

This product is exclusively available under Proteintech Group brand and is not available to purchase from any other manufacturer.

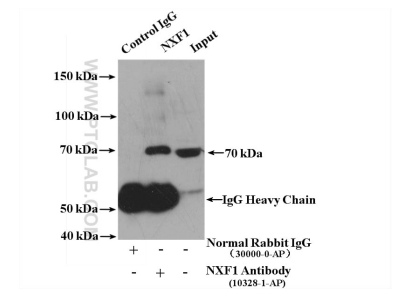
Ausgewählte Validierungsdaten



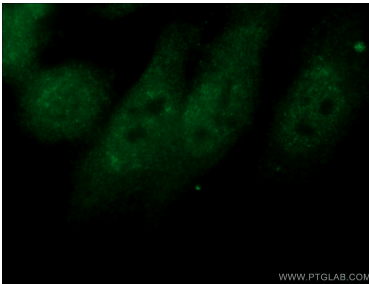
HeLa cells were subjected to SDS PAGE followed by western blot with 10328-1-AP (NXF1 antibody) at dilution of 1:600 incubated at room temperature for 1.5 hours.



WB result of NXF1 antibody (10328-1-AP; 1:1000; incubated at room temperature for 1.5 hours) with sh-Control and sh-NXF1 transfected HeLa cells.



IP result of anti-NXF1 (IP:10328-1-AP, 4ug; Detection:10328-1-AP 1:500) with HeLa cells lysate 3000 ug.



Immunofluorescent analysis of HepG2 cells using 10328-1-AP (NXF1 antibody) at dilution of 1:50 and Alexa Fluor 488-conjugated AffiniPure Goat Anti-Rabbit IgG(H+L).