

Allgemeine Informationen

Katalog-Nr.:

10345-1-AP

Größe:

150ul , Konzentration: 700 µg/ml von Nanodrop und 333 µg/ml durch die Bradford-Methode mit BSA als Standard;

Wirt:

Kaninchen

Isotyp:

IgG

Immunogen Katalognummer:

AG0350

GenBank-Zugangsnummer:

BC000677

GeneID (NCBI):

6050

Vollständiger Name:

ribonuclease/angiogenin inhibitor 1

Berechnete Masse:

50 kDa

Beobachtete Masse:

45-50 kDa

Reinigungsmethode:

Antigen-Affinitätsreinigung

Empfohlene Verdünnungen:

WB 1:2000-1:10000

IP 0.5-4.0 µg für IP und 1:500-1:1000

für WB

IHC 1:50-1:500

IF 1:200-1:800

Anwendungen

Geprüfte Anwendungen:

FC, IF, IHC, IP, WB, ELISA

In Publikationen genannte Anwendungen:

IF, IHC, WB

Getestete Reaktivität:

Human, Maus

Zitierte Arten:

Human, Maus

Hinweis-IHC: Antigenmaskierung mit TE-Puffer pH 9,0 empfohlen. (*) Wahlweise kann die Antigenmaskierung auch mit Citratpuffer pH 6,0 erfolgen.

Positivkontrollen:

WB : HEK-293T-Zellen, HeLa-Zellen, HepG2-Zellen, humanes Herzgewebe, humanes Hirngewebe, humanes Lebergewebe, humanes Plazenta-Gewebe, Jurkat-Zellen, LO2-Zellen

IP : Mauslebergewebe,

IHC : Mauslebergewebe,

IF : MCF-7-Zellen,

Hintergrundinformationen

Ribonuclease/ angiogenin inhibitor (RNH, synonyms: RAI, MGC4569, MGC18200, MGC54054) is a protein that binds tightly to ribonucleases in cells and may be essential in the control of mRNA degradation and gene expression. The human RNH gene has been regionally localized to chromosome band 11p15 by in situ hybridization.

Bemerkenswerte Veröffentlichungen

Verfasser	Pubmed ID	Journal	Anwendung
Yasutoshi Akiyama	36361884	Int J Mol Sci	WB
Yasutoshi Akiyama	35300117	Front Mol Biosci	WB
Shozo Honda	26124144	Proc Natl Acad Sci U S A	WB

Lagerung

Lagerungsbedingungen:

Bei -20°C lagern. Nach dem Versand ein Jahr lang stabil

Lagerungspuffer:

PBS mit 0.02% Natriumazid und 50% Glycerin pH 7.3.

Aliquotieren ist nicht notwendig bei -20°C Lagerung

*** 20ul-Größen enthalten 0.1% BSA

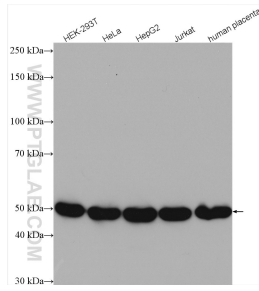
For technical support and original validation data for this product please contact:

T: 1 (888) 4PTGLAB (1-888-478-4522) (toll free in USA), or 1(312) 455-8498 (outside USA)

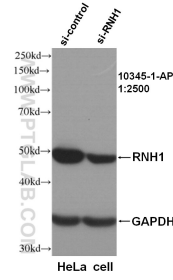
E: proteintech@ptglab.com
 W: ptglab.com

This product is exclusively available under Proteintech Group brand and is not available to purchase from any other manufacturer.

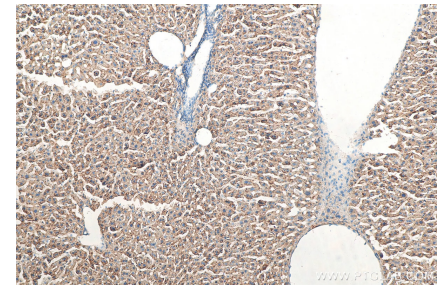
Ausgewählte Validierungsdaten



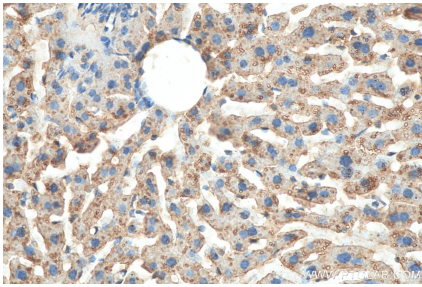
Various lysates were subjected to SDS PAGE followed by western blot with 10345-1-AP (RNH1 antibody) at dilution of 1:6000 incubated at room temperature for 1.5 hours.



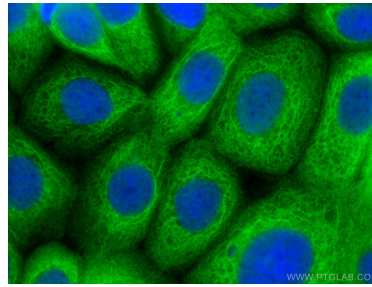
WB result of RNH1 antibody (10345-1-AP, 1:2500) with si-control and si-RNH1 transfected HeLa cells.



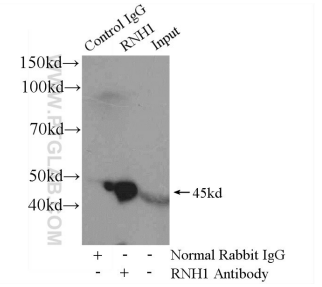
Immunohistochemical analysis of paraffin-embedded mouse liver tissue slide using 10345-1-AP (RNH1 antibody) at dilution of 1:200 (under 10x lens). Heat mediated antigen retrieval with Tris-EDTA buffer (pH 9.0).



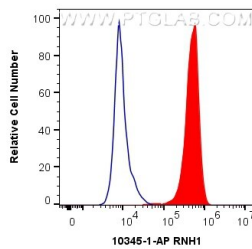
Immunohistochemical analysis of paraffin-embedded mouse liver tissue slide using 10345-1-AP (RNH1 antibody) at dilution of 1:200 (under 40x lens). Heat mediated antigen retrieval with Tris-EDTA buffer (pH 9.0).



Immunofluorescent analysis of (-20°C Methanol) fixed MCF-7 cells using RNH1 antibody (10345-1-AP) at dilution of 1:400 and CoraLite®488-Conjugated AffiniPure Goat Anti-Rabbit IgG(H+L).



IP Result of anti-RNH1 (IP:10345-1-AP, 4ug; Detection:10345-1-AP 1:500) with mouse liver tissue lysate 6400ug.



1X10⁶ MCF-7 cells were intracellularly stained with 0.4 ug Anti-Human RNH1 (10345-1-AP) and CoraLite®488-Conjugated AffiniPure Goat Anti-Rabbit IgG(H+L) at dilution 1:1000 (red), or 0.4 ug Control Antibody. Cells were fixed with 4% PFA and permeabilized with Flow Cytometry Perm Buffer (PF00011-C).