

Nur für Forschungszwecke

Emerin Polyklonaler Antikörper

Katalog-Nr.: 10351-1-AP

22 Publikationen



Allgemeine Informationen

Katalog-Nr.: 10351-1-AP	GenBank-Zugangsnummer: BC000738	Reinigungsmethode: Antigen-Affinitätsreinigung
Größe: 150ul, Konzentration: 700 µg/ml von Nanodrop und 500 µg/ml durch die Bradford-Methode mit BSA als Standard;	GeneID (NCBI): 2010	Empfohlene Verdünnungen: WB 1:2000-1:10000 IP 0.5-4.0 µg für IP und 1:500-1:2000 für WB IHC 1:500-1:2000 IF 1:50-1:500
Wirt: Kaninchen	Vollständiger Name: emerin	
Isotyp: IgG	Berechnete Masse: 34 kDa	
Immunogen Katalognummer: AG0236	Beobachtete Masse: 35 kDa	

Anwendungen

Geprüfte Anwendungen:

FC, IF, IHC, IP, WB, ELISA

In Publikationen genannte Anwendungen:

CoIP, IF, IHC, IP, WB

Getestete Reaktivität:

Human, Maus

Zitierte Arten:

Human, Maus

Hinweis-IHC: Antigenmaskierung mit TE-Puffer pH 9,0 empfohlen. (*) Wahlweise kann die Antigenmaskierung auch mit Citratpuffer pH 6,0 erfolgen.

Positivkontrollen:

WB: HEK-293-Zellen, A431-Zellen, COLO 320-Zellen, HeLa-Zellen, HepG2-Zellen, Jurkat-Zellen, MCF-7-Zellen

IP: Maus-Skelettmuskelgewebe,

IHC: humanes Schilddrüsenkarzinomgewebe,

IF: HeLa-Zellen,

Hintergrundinformationen

Emerin (Emery-Dreifuss muscular dystrophy) (EMD or EDMD), a serine-rich nuclear membrane protein, is a member of the nuclear lamina-associated protein family. EMD may mediate membrane anchorage to the cytoskeleton by stabilizing and promoting the formation of a nuclear actin cortical network. Defects in EMD gene are the cause of Emery-Dreifuss muscular dystrophy type 1 (EDMD1), a degenerative myopathy characterized by weakness and atrophy of muscle without involvement of the nervous system, early contractures of the elbows Achilles tendons and spine, and cardiomyopathy associated with cardiac conduction defects. EMD inhibits beta-catenin activity by preventing its accumulation in the nucleus and is involved in HIV-1 infection.

Bemerkenswerte Veröffentlichungen

Verfasser	Pubmed ID	Journal	Anwendung
Shiwei Liu	30232450	Nature	IF
Dean J Procter	32908309	Nature	WB, IF
Christelle Lenain	26354777	Carcinogenesis	WB, IF

Lagerung

Lagerungsbedingungen:

Bei -20°C lagern. Nach dem Versand ein Jahr lang stabil

Lagerungspuffer:

PBS mit 0.02% Natriumazid und 50% Glycerin pH 7.3.

Aliquotieren ist nicht notwendig bei -20°C Lagerung

*** 20ul-Größen enthalten 0.1% BSA

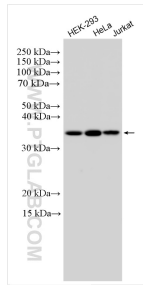
For technical support and original validation data for this product please contact:

T: 1 (888) 4PTGLAB (1-888-478-4522) (toll free in USA), or 1(312) 455-8498 (outside USA)

E: proteintech@ptglab.com
W: ptglab.com

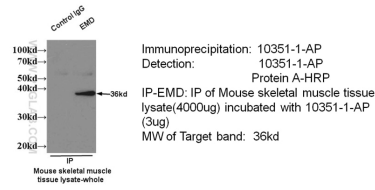
This product is exclusively available under Proteintech Group brand and is not available to purchase from any other manufacturer.

Ausgewählte Validierungsdaten

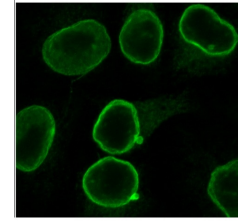


Various lysates were subjected to SDS PAGE followed by western blot with 10351-1-AP (Emerin antibody) at dilution of 1:5000 incubated at room temperature for 1.5 hours.

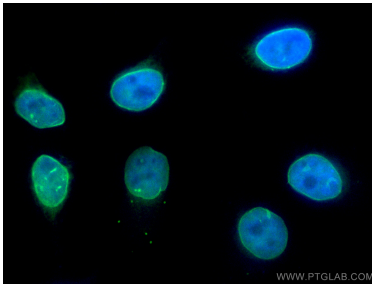
IP & WB of 10351-1-AP with Mouse skeletal muscle tissue



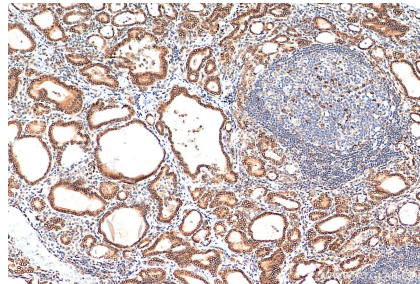
IP result of EMD antibody (10351-1-AP for IP and Detection) with mouse skeletal muscle tissue lysate.



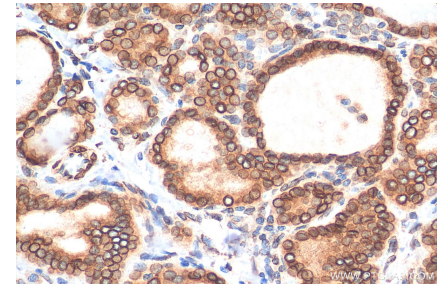
IF result of anti-EMD (10351-1-AP) in HeLa cell by Dr. Ralph Kehlenbach.



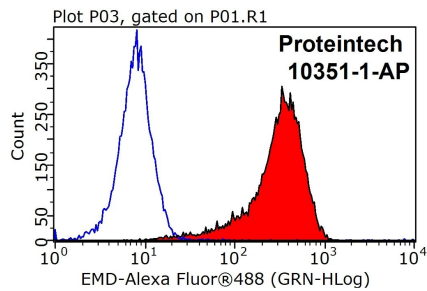
Immunofluorescent analysis of (4% PFA) fixed HeLa cells using Emerin antibody (10351-1-AP) at dilution of 1:200 and CoralLite®488-Conjugated AffiniPure Goat Anti-Rabbit IgG(H+L).



Immunohistochemical analysis of paraffin-embedded human thyroid cancer tissue slide using 10351-1-AP (Emerin antibody) at dilution of 1:1000 (under 10x lens). Heat mediated antigen retrieval with Tris-EDTA buffer (pH 9.0).



Immunohistochemical analysis of paraffin-embedded human thyroid cancer tissue slide using 10351-1-AP (Emerin antibody) at dilution of 1:1000 (under 40x lens). Heat mediated antigen retrieval with Tris-EDTA buffer (pH 9.0).



1x10⁶ HEK-293T cells were stained with 0.2ug Emerin antibody (10351-1-AP, red) and control antibody (blue). Fixed with 90% MeOH blocked with 3% BSA (30 min). Alexa Fluor 488-conjugated AffiniPure Goat Anti-Rabbit IgG(H+L) with dilution 1:1000.