

Nur für Forschungszwecke

HBS1L Polyklonaler Antikörper

Katalog-Nr.:10359-1-AP

Vorgestelltes Produkt

6 Publikationen



Allgemeine Informationen

Katalog-Nr.: 10359-1-AP	GenBank-Zugangsnummer: BC001465	Reinigungsmethode: Antigen-Affinitätsreinigung
Größe: 150ul , Konzentration: 1000 µg/ml von10767 Nanodrop;	GeneID (NCBI): Vollständiger Name: HBS1-like (S. cerevisiae)	Empfohlene Verdünnungen: WB 1:5000-1:50000 IP 0.5-4.0 ug für IP und 1:500-1:2000 für WB
Wirt: Kaninchen	Berechnete Masse: 75 kDa	IHC 1:20-1:200 IF 1:10-1:100
Isotyp: IgG	Beobachtete Masse: 75 kDa	
Immunogen Katalognummer: AG0388		

Anwendungen

Geprüfte Anwendungen:

IF, IHC, IP, WB, ELISA

In Publikationen genannte Anwendungen:

WB

Getestete Reaktivität:

Human, Maus, Ratte

Zitierte Arten:

Human, Maus

Hinweis-IHC: Antigendemaskierung mit TE-Puffer pH 9,0 empfohlen. (*) Wahlweise kann die Antigendemaskierung auch mit Citratpuffer pH 6,0 erfolgen.

Positivkontrollen:

WB : Jurkat-Zellen, A2780-Zellen, Maushirngewebe, SKOV-3-Zellen

IP : Maushirngewebe,

IHC : humanes Pankreaskarzinomgewebe,

IF : HepG2-Zellen,

Hintergrundinformationen

HBS1L (HBS1-like), also known as EF-1a or ERF5, is a 684 amino acid protein that belongs to the GTP-binding elongation factor family and exists as multiple alternatively spliced isoforms. Expressed in kidney, brain, heart, placenta, liver, muscle and pancreas, HSB1L is thought to play a role in controlling fetal hemoglobin levels, specifically influencing platelet, monocyte and erythrocyte hemoglobin content. The gene encoding HBS1L maps to a locus on human chromosome 6 that is associated with sickle cell anemia and beta-thalassemia, suggesting a role for HBS1L in the pathogenesis of blood disorders. This antibody specifically recognizes the 75kd human HBS1L protein.

Bemerkenswerte Veröffentlichungen

Verfasser	Pubmed ID	Journal	Anwendung
John Rp Knight	25353634	Biochem J	WB
Michael K Slevin	24656133	Mol Cell	WB
Hussein H Aly	27281821	J Biol Chem	WB

Lagerung

Lagerungsbedingungen:

Bei -20°C lagern. Nach dem Versand ein Jahr lang stabil

Lagerungspuffer:

PBS mit 0.02% Natriumazid und 50% Glycerin pH 7.3.

Aliquotieren ist nicht notwendig bei -20°C Lagerung

***** 20ul-Größen enthalten 0.1% BSA**

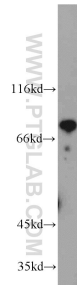
For technical support and original validation data for this product please contact:

T: 1 (888) 4PTGLAB (1-888-478-4522) (toll free in USA), or 1(312) 455-8498 (outside USA)

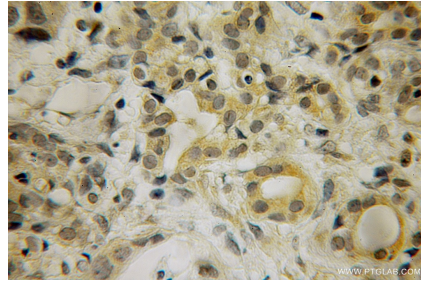
E: proteintech@ptglab.com
W: ptglab.com

This product is exclusively available under Proteintech Group brand and is not available to purchase from any other manufacturer.

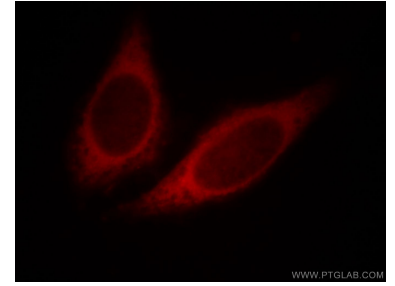
Ausgewählte Validierungsdaten



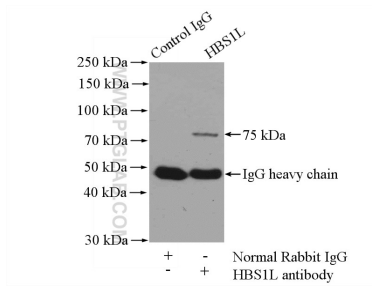
Jurkat cells were subjected to SDS PAGE followed by western blot with 10359-1-AP (HBS1L antibody) at dilution of 1:2000 incubated at room temperature for 1.5 hours.



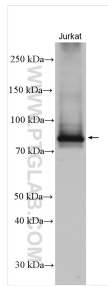
Immunohistochemical analysis of paraffin-embedded human pancreas cancer using 10359-1-AP (HBS1L antibody) at dilution of 1:50 (under 25x lens).



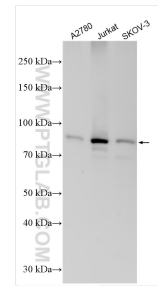
Immunofluorescent analysis of HepG2 cells, using HBS1L antibody 10359-1-AP at 1:25 dilution and Rhodamine-labeled goat anti-rabbit IgG (red).



IP Result of anti-HBS1L (IP:10359-1-AP, 4ug; Detection:10359-1-AP 1:1000) with mouse brain tissue lysate 4000ug.



Jurkat cells were subjected to SDS PAGE followed by western blot with 10359-1-AP (HBS1L antibody) at dilution of 1:10000 incubated at room temperature for 1.5 hours.



Various lysates were subjected to SDS PAGE followed by western blot with 10359-1-AP (HBS1L antibody) at dilution of 1:8000 incubated at room temperature for 1.5 hours.