

Nur für Forschungszwecke

# MMP1 Polyklonaler Antikörper

Katalog-Nr.: 10371-2-AP

Vorgestelltes Produkt

146 Publikationen



## Allgemeine Informationen

<b>Katalog-Nr.:</b> 10371-2-AP	<b>GenBank-Zugangsnummer:</b> BC013875	<b>Reinigungsmethode:</b> Antigen-Affinitätsreinigung
<b>Größe:</b> 150ul , Konzentration: 700 µg/ml von Nanodrop;	<b>GeneID (NCBI):</b> 4312	<b>Empfohlene Verdünnungen:</b> WB 1:1000-1:4000 IF 1:20-1:200
<b>Wirt:</b> Kaninchen	<b>Vollständiger Name:</b> matrix metalloproteinase 1 (interstitial collagenase)	
<b>Isotyp:</b> IgG	<b>Berechnete Masse:</b> 54 kDa	
<b>Immunogen Katalognummer:</b> AG0547	<b>Beobachtete Masse:</b> 52-56 kDa, 62 kDa	

## Anwendungen

<b>Geprüfte Anwendungen:</b> FC, IF, WB, ELISA	<b>Positivkontrollen:</b> WB : U-87 MG-Zellen, NIH/3T3-Zellen IF : HepG2-Zellen,
<b>In Publikationen genannte Anwendungen:</b> IF, IHC, WB	
<b>Getestete Reaktivität:</b> Human, Maus, Ratte	
<b>Zitierte Arten:</b> Human, Kaninchen, Maus, Ratte, Rind	

## Hintergrundinformationen

MMP1, also named as CLG, belongs to the peptidase M10A family. MMP is the main enzyme that cleaves fibrillar collagen, namely types I, II, III, VII, and X. It is involved in cell migration and invasion, and is frequently up-regulated in cancer cells. It can be cleavage to two major forms (22 kDa and 27 kDa) by undergoing autolytic, and the minor form (25 kDa) is the glycosylated form of the 22 kDa form. The 27 kDa form has no activity while the 22/25 kDa form can act as activator for collagenase. The sizes of pro-MMP-1 and active MMP-1 from human synovial fibroblasts have been reported as 52 to 56 kDa, depending on glycosylation, and 41 to 45 kDa, respectively. In addition, a band of 62-kDa observed in the current study is pro-MMP-1 (PMID:9418730).

## Bemerkenswerte Veröffentlichungen

Verfasser	Pubmed ID	Journal	Anwendung
Wei-Lin Teng	34679686	Antioxidants (Basel)	WB
Wenbin Pei	34650433	Front Pharmacol	WB
Hana Nopia	36167912	Biometals	WB

## Lagerung

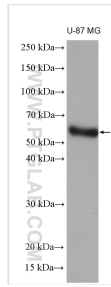
**Lagerungsbedingungen:**  
Bei -20°C lagern. Nach dem Versand ein Jahr lang stabil  
**Lagerungspuffer:**  
PBS mit 0.02% Natriumazid und 50% Glycerin pH 7.3.  
Aliquotieren ist nicht notwendig bei -20°C Lagerung

\*\*\* 20ul-Größen enthalten 0.1% BSA

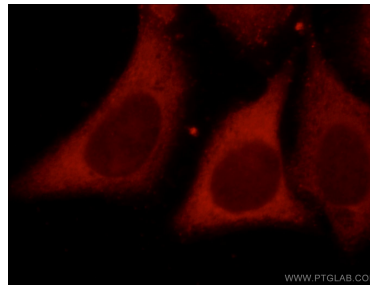
For technical support and original validation data for this product please contact:  
T: 1 (888) 4PTGLAB (1-888-478-4522) (toll free in USA), or 1(312) 455-8498 (outside USA)  
E: proteintech@ptglab.com  
W: ptglab.com

This product is exclusively available under Proteintech Group brand and is not available to purchase from any other manufacturer.

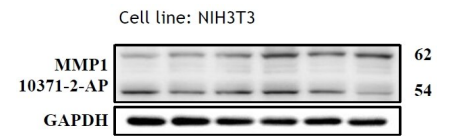
## Ausgewählte Validierungsdaten



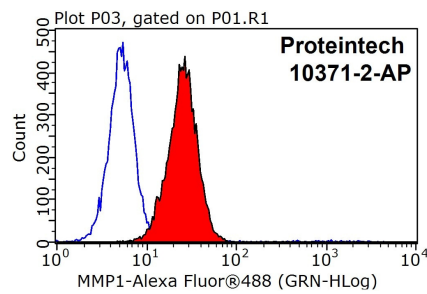
U-87 MG cells were subjected to SDS PAGE followed by western blot with 10371-2-AP (MMP1 antibody) at dilution of 1:2000 incubated at room temperature for 1.5 hours.



Immunofluorescent analysis of HepG2 cells, using MMP1 antibody 10371-2-AP at 1:50 dilution and Rhodamine-labeled goat anti-rabbit IgG (red).



WB results of MMP1 antibody (10371-1-AP, 1:500) with NIH3T3 cells, 62 kDa for pro-MMP1 and 54 kDa for Active MMP1. Data from Dr. Hui-Wen Chiu, Taipei Medical University.



1X10<sup>6</sup> HepG2 cells were stained with 0.2ug MMP1 antibody (10371-2-AP, red) and control antibody (blue). Fixed with 90% MeOH blocked with 3% BSA (30 min). Alexa Fluor 488-conjugated AffiniPure Goat Anti-Rabbit IgG(H+L) with dilution 1:1000.