

Nur für Forschungszwecke

# MMP2 Polyklonaler Antikörper

Katalog-Nr.:10373-2-AP

Vorgestelltes Produkt

703 Publikationen



## Allgemeine Informationen

Katalog-Nr.:  
10373-2-AP

Größe:  
150ul, Konzentration: 650 µg/ml von  
Nanodrop;

Wirt:  
Kaninchen

Isotyp:  
IgG

Immunogen Katalognummer:  
AG0549

GenBank-Zugangsnummer:  
BC002576

GeneID (NCBI):  
4313

Vollständiger Name:  
matrix metalloproteinase 2  
(gelatinase A, 72kDa gelatinase,  
72kDa type IV collagenase)

Berechnete Masse:  
72 kDa

Beobachtete Masse:  
62-72 kDa

Reinigungsmethode:

Antigen-Affinitätsreinigung

Empfohlene Verdünnungen:

WB 1:500-1:1000  
IP 0.5-4.0 µg für IP und 1:200-1:1000  
für WB  
IHC 1:100-1:400  
IF 1:50-1:500

## Anwendungen

Geprüfte Anwendungen:

IF, IHC, IP, WB, ELISA

In Publikationen genannte Anwendungen:

IF, IHC, IP, WB

Getestete Reaktivität:

Human, Maus

Zitierte Arten:

Fisch, Hausschwein, Human, Kaninchen, Maus, Ratte,  
Rind

**Hinweis-IHC: Antigenmaskierung mit TE-  
Puffer pH 9,0 empfohlen. (\*) Wahlweise  
kann die Antigenmaskierung auch mit  
Citratpuffer pH 6,0 erfolgen.**

Positivkontrollen:

WB : HT-1080.Zellen, HepG2-Zellen, MCF-7-Zellen, U-  
251-Zellen, U-87 MG-Zellen

IP : MCF-7-Zellen,

IHC : humanes Gliomgewebe, humanes Herzgewebe,  
humanes Mammakarzinomgewebe, humanes  
Ösophagusgewebe, humanes Plazenta-Gewebe,  
humanes Prostatakarzinomgewebe

IF : HepG2-Zellen,

## Hintergrundinformationen

MMP2, also named as CLG4A, Gelatinase Am, TBE-1 and PEX, belongs to the peptidase M10A family. It is ubiquitous metalloproteinase that is involved in diverse functions such as remodeling of the vasculature, angiogenesis, tissue repair, tumor invasion, inflammation, and atherosclerotic plaque rupture. MMP2 contributes to myocardial oxidative stress by regulating the activity of GSK3beta. It cleaves GSK3beta in vitro. MMP2 can be cleaved into PEX chain (~60kd). Western blot analysis showed that the 72 kDa and 62/65 kDa proteinase activities were pro-MMP2 and the active enzyme, respectively (PMID:11112697, PMID: 30867536).

## Bemerkenswerte Veröffentlichungen

Verfasser	Pubmed ID	Journal	Anwendung
Yanlin Cao	34593020	Arthritis Res Ther	WB
Samana Batool	30274346	Int J Mol Sci	WB
Yangke Cai	29097832	Dis Markers	WB

## Lagerung

Lagerungsbedingungen:

Bei -20°C lagern. Nach dem Versand ein Jahr lang stabil

Lagerungspuffer:

PBS mit 0.02% Natriumazid und 50% Glycerin pH 7.3.

Aliquotieren ist nicht notwendig bei -20°C Lagerung

\*\*\* 20ul-Größen enthalten 0.1% BSA

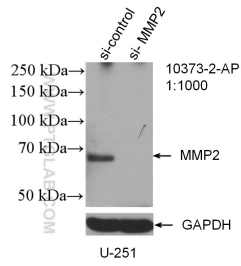
For technical support and original validation data for this product please contact:

T: 1 (888) 4PTGLAB (1-888-478-4522) (toll free  
in USA), or 1(312) 455-8498 (outside USA)

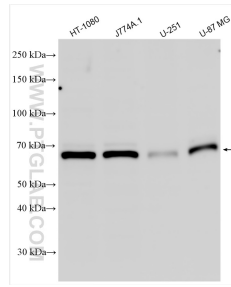
E: proteintech@ptglab.com  
W: ptglab.com

This product is exclusively available under Proteintech Group brand and is not available to purchase from any other manufacturer.

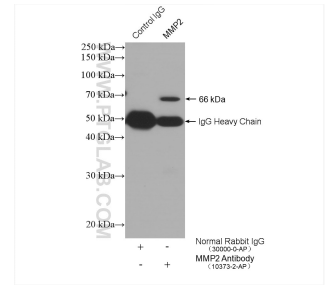
## Ausgewählte Validierungsdaten



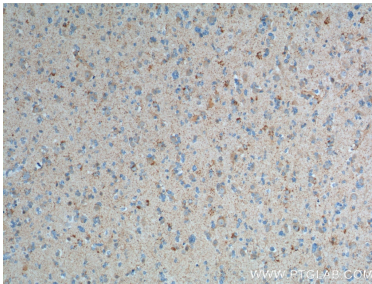
WB result of MMP2 antibody (10373-2-AP; 1:1000; incubated at room temperature for 1.5 hours) with sh-Control and sh-MMP2 transfected U-251 cells.



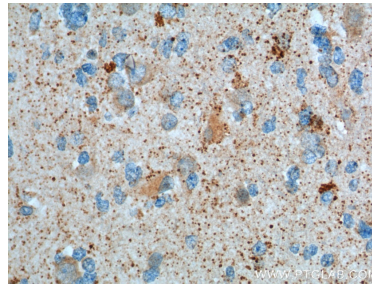
Various lysates were subjected to SDS PAGE followed by western blot with 10373-2-AP (MMP2 antibody) at dilution of 1:800 incubated at room temperature for 1.5 hours.



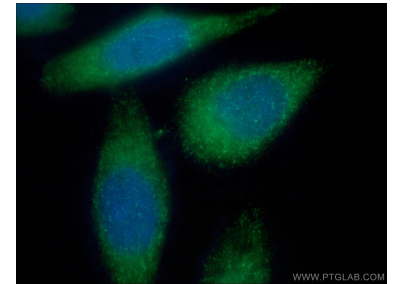
IP result of anti-MMP2 (IP:10373-2-AP, 4ug; Detection:10373-2-AP 1:300) with MCF-7 cells lysate 2400 ug.



Immunohistochemical analysis of paraffin-embedded human gliomas tissue slide using 10373-2-AP (MMP2 Antibody) at dilution of 1:200 (under 10x lens).



Immunohistochemical analysis of paraffin-embedded human gliomas tissue slide using 10373-2-AP (MMP2 Antibody) at dilution of 1:200 (under 40x lens).



Immunofluorescent analysis of (-20°C Ethanol) fixed HepG2 cells using 10373-2-AP (MMP2 antibody) at dilution of 1:50 and Alexa Fluor 488-Conjugated AffiniPure Goat Anti-Rabbit IgG(H+L).