

Nur für Forschungszwecke

NEK6 Polyklonaler Antikörper



Katalog-Nr.: 10378-1-AP

Vorgestelltes Produkt

2 Publikationen

Allgemeine Informationen

Katalog-Nr.: 10378-1-AP	GenBank-Zugangsnummer: BC000101	Reinigungsmethode: Antigen-Affinitätsreinigung
Größe: 150ul, Konzentration: 300 µg/ml von Nanodrop und 200 µg/ml durch die Bradford-Methode mit BSA als Standard;	GeneID (NCBI): 10783	Empfohlene Verdünnungen: WB 1:500-1:1000 IF 1:50-1:500
Wirt: Kaninchen	Vollständiger Name: NIMA (never in mitosis gene a)-related kinase 6	
Isotyp: IgG	Berechnete Masse: 35 kDa	
Immunogen Katalognummer: AG0266	Beobachtete Masse: 35-45 kDa	

Anwendungen

Geprüfte Anwendungen: IF, WB, ELISA	Positivkontrollen: WB : HEK-293-Zellen, HeLa-Zellen, HT-1080.Zellen IF : HeLa-Zellen,
In Publikationen genannte Anwendungen: WB	
Getestete Reaktivität: Affe, Human, Maus, Ratte	
Zitierte Arten: Human	

Hintergrundinformationen

The *Aspergillus nidulans* 'never in mitosis A' (NIMA) is a serine/ threonine kinase that controls initiation of mitosis, whereas its inactivation is necessary for mitotic exit. NIMA-related kinases (NEKs) are a group of protein kinases that are homologous to NIMA. Evidence suggests that NEKs perform functions similar to those of NIMA. Human NIMA-related kinase 6 (NEK6, synonym: SID6-1512) is comprised of 338 amino acids and shows both nuclear and cytoplasmic localizations in HeLa cells. NEK6 is required for mitotic progression of human cells. NEK6 is phosphorylated and activated during M phase. Inhibition of Nek6 function by either overexpression of an inactive Nek6 mutant or elimination of endogenous Nek6 by siRNA arrests cells in M phase and triggers apoptosis. Recombinant human NEK6 protein produced in insect cells effectively phosphorylates histones H1 and H3, but not casein. Thus, these results suggest that, unlike other mammalian NIMA-related kinases, NEK6 is a mitotic histone kinase which regulates chromatin condensation in mammalian cells. NEK6 transcripts are ubiquitously expressed with the highest expression found in the heart and skeletal muscle, and the hNek6 gene is localized to human chromosome 9q33-34. NEK6 has four isoforms with MW 35-40 kDa.

Bemerkenswerte Veröffentlichungen

Verfasser	Pubmed ID	Journal	Anwendung
Xin Jun Wang	35402517	Front Mol Biosci	WB
Zhongshi Hong	35096064	J Oncol	WB

Lagerung

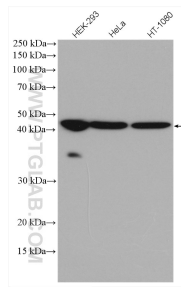
Lagerungsbedingungen:
Bei -20°C lagern. Nach dem Versand ein Jahr lang stabil
Lagerungspuffer:
PBS mit 0.02% Natriumazid und 50% Glycerin pH 7.3.
Aliquotieren ist nicht notwendig bei -20°C Lagerung

*** 20ul-Größen enthalten 0.1% BSA

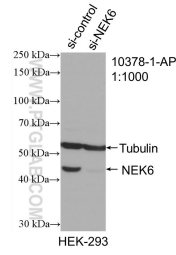
For technical support and original validation data for this product please contact:
T: 1 (888) 4PTGLAB (1-888-478-4522) (toll free in USA), or 1(312) 455-8498 (outside USA)
E: proteintech@ptglab.com
W: ptglab.com

This product is exclusively available under Proteintech Group brand and is not available to purchase from any other manufacturer.

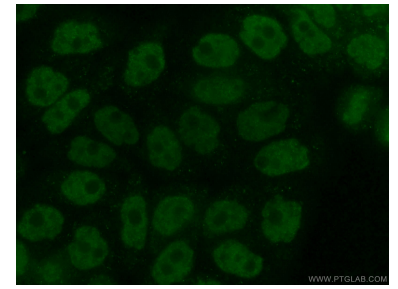
Ausgewählte Validierungsdaten



Various lysates were subjected to SDS PAGE followed by western blot with 10378-1-AP (NEK6 antibody) at dilution of 1:600 incubated at room temperature for 1.5 hours.



WB result of NEK6 antibody (10378-1-AP; 1:1000; incubated at room temperature for 1.5 hours) with sh-Control and sh-NEK6 transfected HEK-293 cells.



Immunofluorescent analysis of (4% PFA) fixed HeLa cells using 10378-1-AP (NEK6 antibody) at dilution of 1:50 and Alexa Fluor 488-Conjugated AffiniPure Goat Anti-Rabbit IgG(H+L).