

## Allgemeine Informationen

<b>Katalog-Nr.:</b> 10424-1-AP	<b>GenBank-Zugangsnummer:</b> BC002853	<b>Reinigungsmethode:</b> Antigen-Affinitätsreinigung
<b>Größe:</b> 150ul, Konzentration: 600 µg/ml von Nanodrop;	<b>GeneID (NCBI):</b> 7965	<b>Empfohlene Verdünnungen:</b> WB 1:500-1:1000 IP 0.5-4.0 ug für IP und 1:500-1:2000 für WB
<b>Wirt:</b> Kaninchen	<b>Vollständiger Name:</b> JTV1 gene	<b>IHC 1:20-1:200</b> <b>IF 1:10-1:100</b>
<b>Isotyp:</b> IgG	<b>Berechnete Masse:</b> 36 kDa	
<b>Immunogen Katalognummer:</b> AG0675	<b>Beobachtete Masse:</b> 35 kDa	

## Anwendungen

### Geprüfte Anwendungen:

IF, IHC, IP, WB, ELISA

### In Publikationen genannte Anwendungen:

IF, WB

### Getestete Reaktivität:

Human, Maus, Ratte

### Zitierte Arten:

Human, Maus, Ratte

**Hinweis-IHC: Antigenmaskierung mit TE-Puffer pH 9,0 empfohlen. (\*) Wahlweise kann die Antigenmaskierung auch mit Citratpuffer pH 6,0 erfolgen.**

### Positivkontrollen:

**WB:** HeLa-Zellen, HepG2-Zellen, K-562-Zellen, L02-Zellen, Mauslebergewebe, NIH/3T3-Zellen, Rattenlebergewebe

**IP:** HeLa-Zellen,

**IHC:** humanes Hodengewebe, humanes Cerebellum-Gewebe, humanes Nierengewebe, Maus-Cerebellum-Gewebe, Maushodengewebe

**IF:** HeLa-Zellen, HepG2-Zellen

## Hintergrundinformationen

JTV1, also named p38, AIMP2, was first known as a factor associated with macromolecular protein complex, which consists several different aminoacyl-tRNA synthetases. JTV1 is a scaffold protein required for the assembly and stability of the multi-tRNA synthetase complex. JTV1 could act as a mediator of TGF-beta signaling and its functional importance in the control of MYC during lung differentiation. Blocks MDM2-mediated ubiquitination and degradation of p53/TP53. Functions as a proapoptotic factor. This is a rabbit polyclonal antibody raised against full-length of JTV1. There're two isoforms of JTV1 with MW about 27 kDa and 35 kDa,

## Bemerkenswerte Veröffentlichungen

Verfasser	Pubmed ID	Journal	Anwendung
Ko Han Seok HS	20823226	Proc Natl Acad Sci U S A	WB
Krishnendu Khan	36037331	Proc Natl Acad Sci U S A	WB
Hyojung Kim	28972555	Int J Mol Sci	WB

## Lagerung

### Lagerungsbedingungen:

Bei -20°C lagern. Nach dem Versand ein Jahr lang stabil

### Lagerungspuffer:

PBS mit 0.02% Natriumazid und 50% Glycerin pH 7.3.

Aliquotieren ist nicht notwendig bei -20°C Lagerung

**\*\*\* 20ul-Größen enthalten 0.1% BSA**

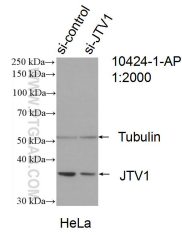
For technical support and original validation data for this product please contact:

T: 1 (888) 4PTGLAB (1-888-478-4522) (toll free in USA), or 1(312) 455-8498 (outside USA)

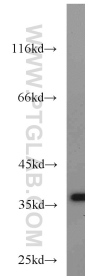
E: [proteintech@ptglab.com](mailto:proteintech@ptglab.com)  
W: [ptglab.com](http://ptglab.com)

**This product is exclusively available under Proteintech Group brand and is not available to purchase from any other manufacturer.**

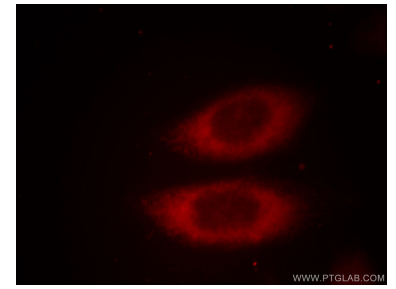
## Ausgewählte Validierungsdaten



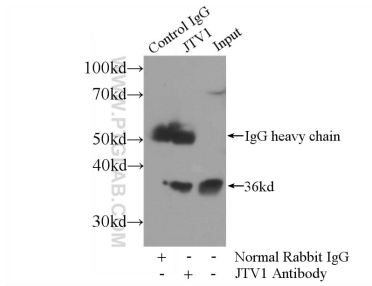
WB result of JTV1 antibody (10424-1-AP; 1:2000; incubated at room temperature for 1.5 hours) with sh-Control and sh-JTV1 transfected HeLa cells.



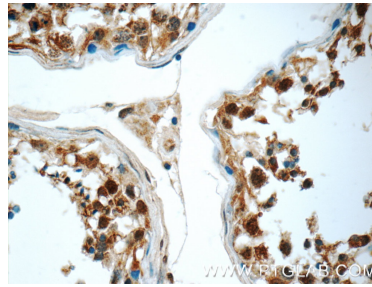
HeLa cells were subjected to SDS PAGE followed by western blot with 10424-1-AP (JTV1 antibody) at dilution of 1:1000 incubated at room temperature for 1.5 hours.



Immunofluorescent analysis of HeLa cells, using JTV1 antibody 10424-1-AP at 1:25 dilution and Rhodamine-labeled goat anti-rabbit IgG (red).



IP Result of anti-JTV1 (IP:10424-1-AP, 3ug; Detection:10424-1-AP 1:1000) with HeLa cells lysate 800ug.



Immunohistochemical analysis of paraffin-embedded human testis tissue slide using 10424-1-AP (JTV1 Antibody) at dilution of 1:50 (under 40x lens).