

Nur für Forschungszwecke

TORC1/CRTC1 Polyklonaler Antikörper



Katalog-Nr.: 10441-1-AP

Vorgestelltes Produkt

8 Publikationen

Allgemeine Informationen

Katalog-Nr.: 10441-1-AP

Größe: 150ul, Konzentration: 600 µg/ml von Nanodrop und 333 µg/ml durch die Bradford-Methode mit BSA als Standard;

Wirt: Kaninchen

Isotyp: IgG

Immunogen Katalognummer: AG0693

GenBank-Zugangsnummer: BC028050

GeneID (NCBI): 23373

Vollständiger Name: CREB regulated transcription coactivator 1

Berechnete Masse: 75 kDa

Beobachtete Masse: 68 kDa

Reinigungsmethode:

Antigen-Affinitätsreinigung

Empfohlene Verdünnungen:

WB 1:500-1:1000
IP 0.5-4.0 µg für IP und 1:500-1:1000 für WB
IHC 1:50-1:500

Anwendungen

Geprüfte Anwendungen:

IHC, IP, WB, ELISA

In Publikationen genannte Anwendungen:

IF, IP, WB

Getestete Reaktivität:

Human, Maus

Zitierte Arten:

Human, Maus, Ratte

Hinweis-IHC: Antigendemaskierung mit TE-Puffer pH 9,0 empfohlen. (*) Wahlweise kann die Antigendemaskierung auch mit Citratpuffer pH 6,0 erfolgen.

Positivkontrollen:

WB: Mausnierengewebe, A431-Zellen, Jurkat-Zellen, L02-Zellen, Maushirngewebe

IP: Mausnierengewebe,

IHC: humanes Kolonkarzinomgewebe, Maushirngewebe

Hintergrundinformationen

CRTC1, also named as MECT1, TORC1, and WAMTP1, belongs to the TORC family. It is a transcriptional coactivator for CREB1 which activates transcription through both consensus and variant cAMP response element (CRE) sites. CRTC1 acts as a coactivator, in the SIK/TORC signaling pathway, being active when dephosphorylated and acts independently of CREB1 'Ser-133' phosphorylation. It enhances the interaction of CREB1 with TAF4. CRTC1 regulates the expression of specific CREB-activated genes such as the steroidogenic gene, StAR. It is a potent coactivator of PGC1alpha and inducer of mitochondrial biogenesis in muscle cells. CRTC1 is also a coactivator for TAX activation of the human T-cell leukemia virus type 1 (HTLV-1) long terminal repeats (LTR). In the hippocampus, CRTC1 involved in late-phase long-term potentiation (L-LTP) maintenance at the Schaffer collateral-CA1 synapses. It may be required for dendritic growth of developing cortical neurons. This is a rabbit polyclonal antibody raised against residues near N terminus of human CRTC1. CRTC1 has some isoforms produced by alternative splicing with MW of 67 kDa, 68 kDa and 62 kDa. Sometimes it appears as a 75-80 kDa band probably due to phosphorylation (PMID: 17183642; 22770221)

Bemerkenswerte Veröffentlichungen

Verfasser	Pubmed ID	Journal	Anwendung
Toh Hean Ch'ng	26388727	Front Mol Neurosci	IF
Yiwen Lu	34616019	Nat Cell Biol	WB
Lei Wu	29116185	Sci Rep	WB

Lagerung

Lagerungsbedingungen:

Bei -20°C lagern. Nach dem Versand ein Jahr lang stabil

Lagerungspuffer:

PBS mit 0.02% Natriumazid und 50% Glycerin pH 7.3.

Aliquotieren ist nicht notwendig bei -20°C Lagerung

*** 20ul-Größen enthalten 0.1% BSA

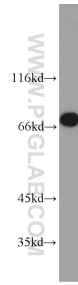
For technical support and original validation data for this product please contact:

T: 1 (888) 4PTGLAB (1-888-478-4522) (toll free in USA), or 1(312) 455-8498 (outside USA)

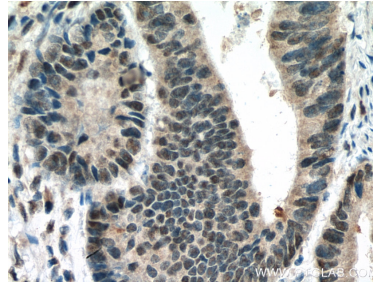
E: proteintech@ptglab.com
W: ptglab.com

This product is exclusively available under Proteintech Group brand and is not available to purchase from any other manufacturer.

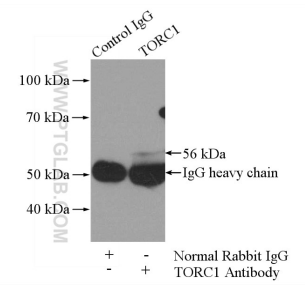
Ausgewählte Validierungsdaten



mouse kidney tissue were subjected to SDS PAGE followed by western blot with 10441-1-AP (TORC1 antibody) at dilution of 1:800 incubated at room temperature for 1.5 hours.



Immunohistochemical analysis of paraffin-embedded human colon cancer tissue slide using 10441-1-AP (TORC1 antibody) at dilution of 1:200 (under 40x lens). Heat mediated antigen retrieval with Tris-EDTA buffer (pH 9.0).



IP Result of anti-TORC1 (IP:10441-1-AP, 4ug; Detection:10441-1-AP 1:800) with mouse kidney tissue lysate 4000ug.