

Nur für Forschungszwecke

transgelin/SM22 Polyklonaler Antikörper



Katalog-Nr.:10493-1-AP

Vorgestelltes Produkt

95 Publikationen

Allgemeine Informationen

Katalog-Nr.:
10493-1-AP

Größe:
150ul, Konzentration: 750 µg/ml von
Nanodrop und 333 µg/ml durch die
Bradford-Methode mit BSA als
Standard;

Wirt:
Kaninchen

Isotyp:
IgG

Immunogen Katalognummer:
AG0764

GenBank-Zugangsnummer:
BC004927

GeneID (NCBI):
6876

Vollständiger Name:
transgelin

Berechnete Masse:
22 kDa

Beobachtete Masse:
19-22 kDa

Reinigungsmethode:
Antigen-Affinitätsreinigung

Empfohlene Verdünnungen:
WB 1:500-1:2000
IHC 1:20-1:200
IF 1:200-1:800

Anwendungen

Geprüfte Anwendungen:

IF, IHC, WB, ELISA

In Publikationen genannte Anwendungen:

FC, IF, IHC, WB

Getestete Reaktivität:

Human, Maus, Ratte

Zitierte Arten:

Human, Hund, Maus, Ratte

Hinweis-IHC: Antigendemaskierung mit TE-Puffer pH 9,0 empfohlen. (*) Wahlweise kann die Antigendemaskierung auch mit Citratpuffer pH 6,0 erfolgen.

Positivkontrollen:

WB : Maus-Kolongewebe, Caco-2-Zellen, humanes Kolongewebe

IHC : humanes Herzgewebe, humanes Kolonkarzinomgewebe, Mausherzgewebe

IF : Mausherzgewebe,

Hintergrundinformationen

The transgelin family is a group of proteins that belong to 22kd actin-related calponin superfamily. Of all three isoforms, transgelin 1 is the best characterized. Transgelin 1, also known as SM22alpha, is a specific marker for differentiated smooth muscle cells. Transgelin 2, also known as SM22 beta, is expressed by both smooth muscle and non-smooth muscle cells in a temporally and spatially regulated pattern. Transgelin 3, also known as NP25, is only found in highly differentiated neuronal cells. This antibody was generated against full length transgelin 1 protein. It can cross-react with other two transgelins based on the sequence similarity.

Bemerkenswerte Veröffentlichungen

Verfasser	Pubmed ID	Journal	Anwendung
Zhuqing Li	34607159	Redox Biol	IF
Yan Yan	36068532	Reprod Biol Endocrinol	IHC,IF
Tao Li	31499136	Neurosci Lett	WB

Lagerung

Lagerungsbedingungen:

Bei -20°C lagern. Nach dem Versand ein Jahr lang stabil

Lagerungspuffer:

PBS mit 0.02% Natriumazid und 50% Glycerin pH 7.3.

Aliquotieren ist nicht notwendig bei -20°C Lagerung

*** 20ul-Größen enthalten 0.1% BSA

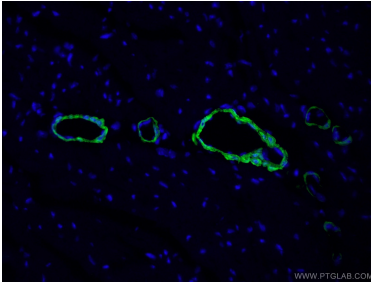
For technical support and original validation data for this product please contact:

T: 1 (888) 4PTGLAB (1-888-478-4522) (toll free in USA), or 1(312) 455-8498 (outside USA)

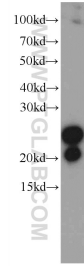
E: proteintech@ptglab.com
W: ptglab.com

This product is exclusively available under Proteintech Group brand and is not available to purchase from any other manufacturer.

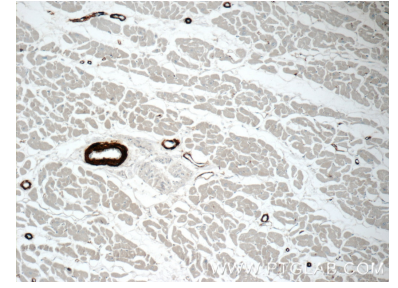
Ausgewählte Validierungsdaten



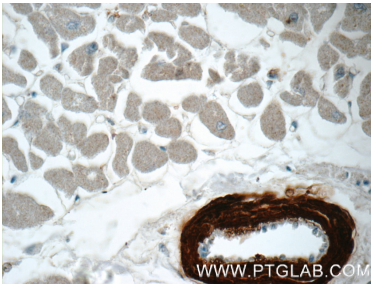
Immunofluorescent analysis of (4% PFA) fixed mouse heart tissue using 10493-1-AP (transgelin/SM22 antibody) at dilution of 1:50 and Alexa Fluor 488-Conjugated AffiniPure Goat Anti-Rabbit IgG(H+L).



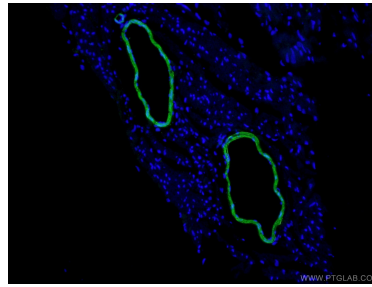
mouse colon tissue were subjected to SDS PAGE followed by western blot with 10493-1-AP (transgelin/SM22 antibody) at dilution of 1:1000 incubated at room temperature for 1.5 hours.



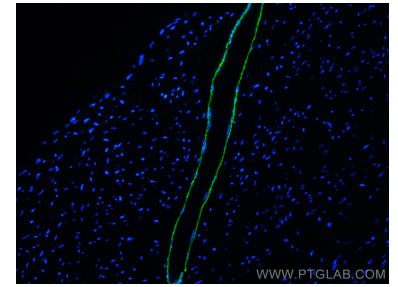
Immunohistochemical analysis of paraffin-embedded human heart tissue slide using 10493-1-AP (transgelin/SM22 antibody) at dilution of 1:50 (under 10x lens).



Immunohistochemical analysis of paraffin-embedded human heart tissue slide using 10493-1-AP (transgelin/SM22 antibody) at dilution of 1:50 (under 40x lens).



Immunofluorescent analysis of (4% PFA) fixed mouse heart tissue using 10493-1-AP (transgelin/SM22 antibody) at dilution of 1:50 and Alexa Fluor 488-conjugated AffiniPure Goat Anti-Rabbit IgG(H+L).



Immunofluorescent analysis of (4% PFA) fixed mouse heart tissue using transgelin/SM22 antibody (10493-1-AP) at dilution of 1:400 and CoraLite@488-Conjugated AffiniPure Goat Anti-Rabbit IgG(H+L).