

Allgemeine Informationen

Katalog-Nr.: 10495-1-AP	GenBank-Zugangsnummer: BC002899	Reinigungsmethode: Antigen-Affinitätsreinigung
Größe: 150ul , Konzentration: 600 µg/ml von Nanodrop;	GeneID (NCBI): 5300	Empfohlene Verdünnungen: WB 1:2000-1:10000 IP 0.5-4.0 ug für IP und 1:500-1:1000 für WB
Wirt: Kaninchen	Vollständiger Name: peptidylprolyl cis/trans isomerase, NIMA-interacting 1	IHC 1:500-1:2000 IF 1:50-1:500
Isotyp: IgG	Berechnete Masse: 18 kDa	
Immunogen Katalognummer: AG0767	Beobachtete Masse: 18 kDa	

Anwendungen

Geprüfte Anwendungen:

IF, IHC, IP, WB, ELISA

In Publikationen genannte Anwendungen:

IF, IHC, IP, WB

Getestete Reaktivität:

Human, Maus, Ratte

Zitierte Arten:

Human, Maus, Ratte

Hinweis-IHC: Antigenmaskierung mit TE-Puffer pH 9,0 empfohlen. (*) Wahlweise kann die Antigenmaskierung auch mit Citratpuffer pH 6,0 erfolgen.

Positivkontrollen:

WB: A549-Zellen, HEK-293-Zellen, HeLa-Zellen, Jurkat-Zellen, Maushirngewebe, NIH/3T3-Zellen, PC-12-Zellen, Rattenhirngewebe

IP: HepG2-Zellen,

IHC: humanes Pankreaskarzinomgewebe, humanes Nierenzellkarzinomgewebe

IF: HEK-293-Zellen, NIH/3T3-Zellen

Hintergrundinformationen

• PIN1(Peptidyl-prolyl cis-trans isomerase NIMA-interacting 1) is essential for mitosis progression in yeast cells and is hypothesized to perform the same role in mammalian cells. It might regulate cellular processes distinct from the cell cycle itself, such as terminal differentiation through a modulation of differentiation-specific gene expression(PMID:20801874). It colocalizes with NEK6 in the nucleus. Pin1 inhibition simultaneously blocks multiple cancer pathways, disrupts the desmoplastic and immunosuppressive TME, and upregulates PD-L1 and ENT1, rendering pancreatic ductal adenocarcinoma (PDAC) eradicable by immunochemotherapy (PMID: 34388391).

Bemerkenswerte Veröffentlichungen

Verfasser	Pubmed ID	Journal	Anwendung
Di Wu	30246389	J Cell Physiol	IF
Linna Xie	30263006	Int J Biol Sci	WB
An-Ning Zhao	36250925	FASEB J	WB,IHC

Lagerung

Lagerungsbedingungen:

Bei -20°C lagern. Nach dem Versand ein Jahr lang stabil

Lagerungspuffer:

PBS mit 0.02% Natriumazid und 50% Glycerin pH 7.3.

Aliquotieren ist nicht notwendig bei -20°C Lagerung

*** 20ul-Größen enthalten 0.1% BSA

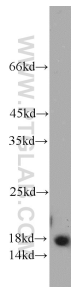
For technical support and original validation data for this product please contact:

T: 1 (888) 4PTGLAB (1-888-478-4522) (toll free in USA), or 1(312) 455-8498 (outside USA)

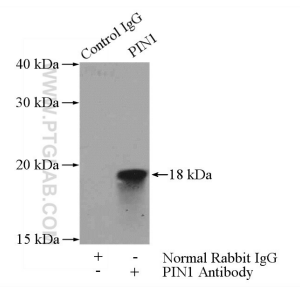
E: proteintech@ptglab.com
W: ptglab.com

This product is exclusively available under Proteintech Group brand and is not available to purchase from any other manufacturer.

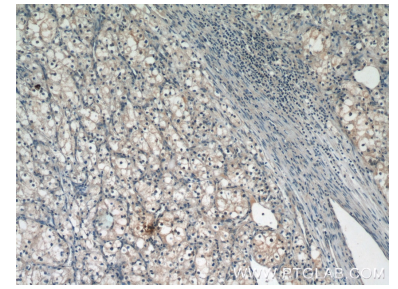
Ausgewählte Validierungsdaten



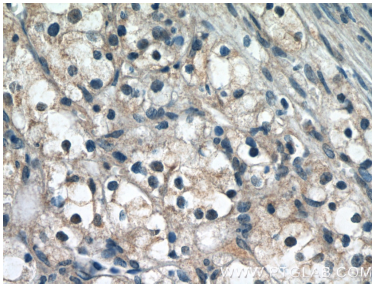
HEK-293 cells were subjected to SDS PAGE followed by western blot with 10495-1-AP (PIN1 antibody) at dilution of 1:1000 incubated at room temperature for 1.5 hours.



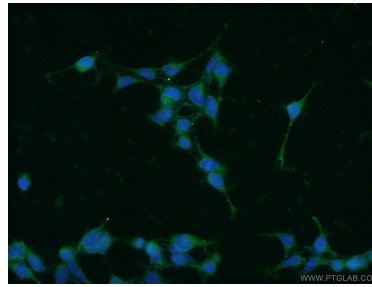
IP Result of anti-PIN1 (IP:10495-1-AP, 4ug; Detection:10495-1-AP 1:500) with HepG2 cells lysate 2400ug.



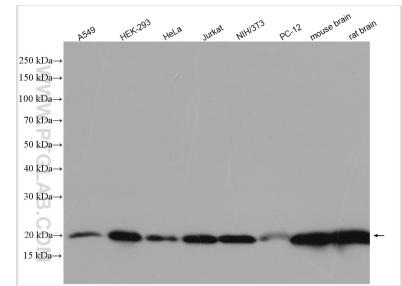
Immunohistochemical analysis of paraffin-embedded human renal cell carcinoma tissue slide using 10495-1-AP (PIN1 Antibody) at dilution of 1:50 (under 10x lens).



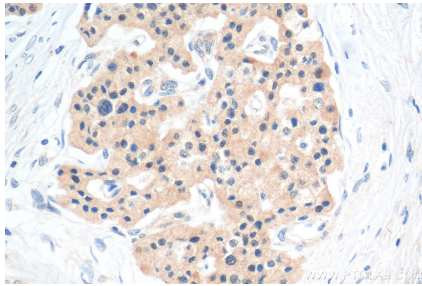
Immunohistochemical analysis of paraffin-embedded human renal cell carcinoma tissue slide using 10495-1-AP (PIN1 Antibody) at dilution of 1:50 (under 40x lens).



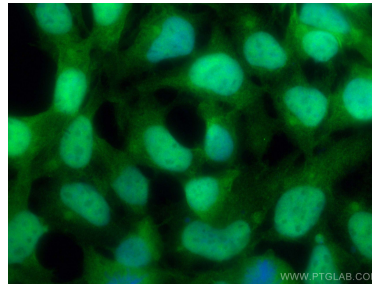
Immunofluorescent analysis of HEK-293 cells using 10495-1-AP (PIN1 antibody) at dilution of 1:50 and Alexa Fluor 488-conjugated AffiniPure Goat Anti-Rabbit IgG(H+L).



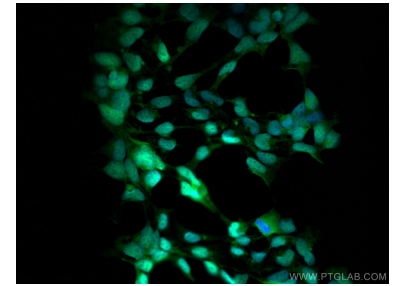
Various lysates were subjected to SDS PAGE followed by western blot with 10495-1-AP (PIN1 antibody) at dilution of 1:5000 incubated at room temperature for 1.5 hours.



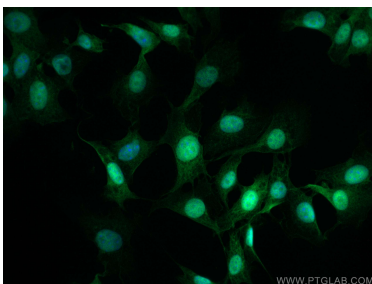
Immunohistochemical analysis of paraffin-embedded human pancreas cancer tissue slide using 10495-1-AP (PIN1 antibody) at dilution of 1:1000 (under 10x lens). Heat mediated antigen retrieval with Tris-EDTA buffer (pH 9.0).



Immunofluorescent analysis of (4% PFA) fixed HEK-293 cells using PIN1 antibody (10495-1-AP) at dilution of 1:200 and CoraLite@488-Conjugated AffiniPure Goat Anti-Rabbit IgG(H+L).



Immunofluorescent analysis of (4% PFA) fixed HEK-293 cells using PIN1 antibody (10495-1-AP) at dilution of 1:200 and CoraLite@488-Conjugated AffiniPure Goat Anti-Rabbit IgG(H+L).



Immunofluorescent analysis of (4% PFA) fixed NIH/3T3 cells using PIN1 antibody (10495-1-AP) at dilution of 1:200 and CoraLite®488-Conjugated AffiniPure Goat Anti-Rabbit IgG(H+L).