

Nur für Forschungszwecke

# KEAP1 Polyklonaler Antikörper

Katalog-Nr.:10503-2-AP

Vorgestelltes Produkt

481 Publikationen



## Allgemeine Informationen

<b>Katalog-Nr.:</b> 10503-2-AP	<b>GenBank-Zugangsnummer:</b> BC002930	<b>Reinigungsmethode:</b> Antigen-Affinitätsreinigung
<b>Größe:</b> 150ul , Konzentration: 600 µg/ml von Nanodrop;	<b>GeneID (NCBI):</b> 9817	<b>Empfohlene Verdünnungen:</b> WB 1:2000-1:10000 IP 0.5-4.0 ug für IP und 1:500-1:1000 für WB
<b>Wirt:</b> Kaninchen	<b>Vollständiger Name:</b> kelch-like ECH-associated protein 1	<b>IHC 1:50-1:500</b> <b>IF 1:50-1:500</b>
<b>Isotyp:</b> IgG	<b>Berechnete Masse:</b> 624 aa, 70 kDa	
<b>Immunogen Katalognummer:</b> AG0779	<b>Beobachtete Masse:</b> 55-70 kDa	

## Anwendungen

### Geprüfte Anwendungen:

IF, IHC, IP, WB, ELISA

### In Publikationen genannte Anwendungen:

CoIP, IF, IHC, IP, WB

### Getestete Reaktivität:

Human, Maus, Ratte

### Zitierte Arten:

Affe, Hausschwein, Huhn, Human, Maus, Ratte, Rind

**Hinweis-IHC: Antigendemaskierung mit TE-Puffer pH 9,0 empfohlen. (\*) Wahlweise kann die Antigendemaskierung auch mit Citratpuffer pH 6,0 erfolgen.**

### Positivkontrollen:

**WB:** HEK-293-Zellen, HeLa-Zellen, HepG2-Zellen, Jurkat-Zellen, MCF-7-Zellen

**IP:** Maus-Skelettmuskelgewebe,

**IHC:** humanes Lungenkarzinomgewebe, humanes Mammakarzinomgewebe, humanes Skelettmuskelgewebe

**IF:** U2OS-Zellen, HepG2-Zellen

## Hintergrundinformationen

KEAP1, also named as INRF2, KIAA0132 and KLHL19, is part of a multiprotein complex that contains the CUL3-ROC1 ubiquitin ligase, which can ubiquitinate the N-terminal domain of NRF2[PMID: 20173742]. Two molecules of KEAP1 bind to two distinct sites in the N-terminal region of NRF2, the ETGE and DLG sites, which affect the KEAP1-NRF2 interaction and/or its physiological consequences[PMID: 22215675]. KEAP1 retains NFE2L2/NRF2 in the cytosol. It functions as substrate adapter protein for the E3 ubiquitin ligase complex formed by CUL3 and RBX1[PMID: 20427290]. It also retains BPTF in the cytosol. This antibody is a rabbit polyclonal antibody raised against residues near the C terminus of human KEAP1.

## Bemerkenswerte Veröffentlichungen

Verfasser	Pubmed ID	Journal	Anwendung
Lin-Tao Xu	34601084	J Ethnopharmacol	WB
Zhenmao Jia	36238566	Front Pharmacol	WB
Taiwei Wang	36169181	Oncol Rep	WB

## Lagerung

### Lagerungsbedingungen:

Bei -20°C lagern. Nach dem Versand ein Jahr lang stabil

### Lagerungspuffer:

PBS mit 0.02% Natriumazid und 50% Glycerin pH 7.3.

Aliquotieren ist nicht notwendig bei -20°C Lagerung

\*\*\* 20ul-Größen enthalten 0.1% BSA

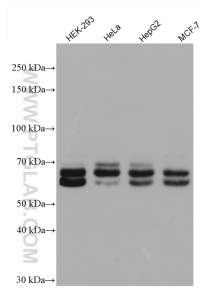
For technical support and original validation data for this product please contact:

T: 1 (888) 4PTGLAB (1-888-478-4522) (toll free in USA), or 1(312) 455-8498 (outside USA)

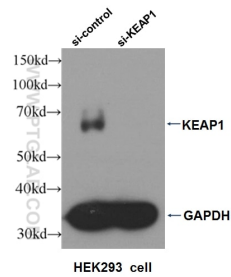
E: proteintech@ptglab.com  
W: ptglab.com

This product is exclusively available under Proteintech Group brand and is not available to purchase from any other manufacturer.

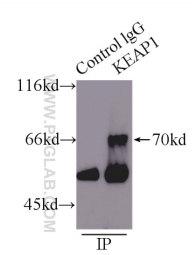
## Ausgewählte Validierungsdaten



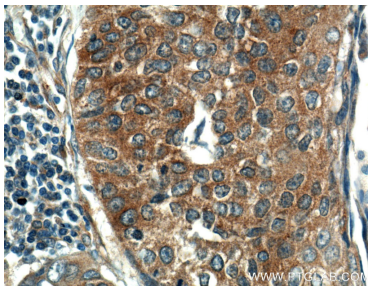
Various lysates were subjected to SDS PAGE followed by western blot with 10503-2-AP (KEAP1 antibody) at dilution of 1:5000 incubated at room temperature for 1.5 hours.



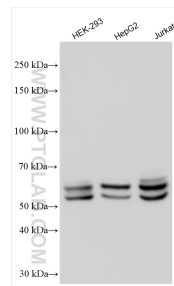
WB result of KEAP1 antibody (10503-2-AP, 1:2000) with si-control and si-KEAP1 transfected HEK293 cell.



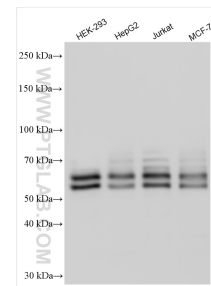
IP Result of anti-KEAP1 (IP:10503-2-AP, 5ug; Detection:10503-2-AP 1:600) with mouse skeletal muscle tissue lysate 8000ug.



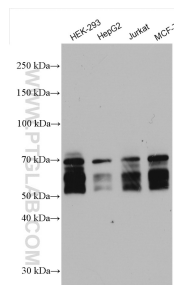
Immunohistochemical analysis of paraffin-embedded human lung cancer tissue slide using 10503-2-AP (KEAP1 Antibody) at dilution of 1:200 (under 10x lens).



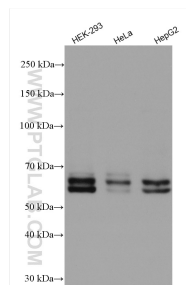
Various lysates were subjected to SDS PAGE followed by western blot with 10503-2-AP (KEAP1 antibody) at dilution of 1:10000 incubated at room temperature for 1.5 hours.



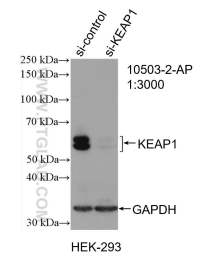
Various lysates were subjected to SDS PAGE followed by western blot with 10503-2-AP (KEAP1 antibody) at dilution of 1:8000 incubated at room temperature for 1.5 hours.



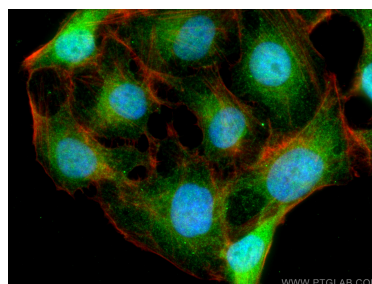
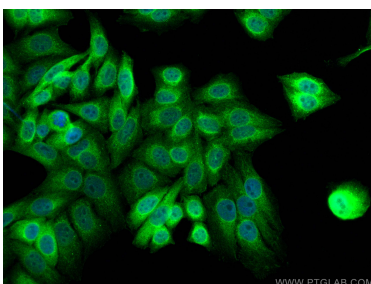
Various lysates were subjected to SDS PAGE followed by western blot with 10503-2-AP (KEAP1 antibody) at dilution of 1:10000 incubated at room temperature for 1.5 hours.



Various lysates were subjected to SDS PAGE followed by western blot with 10503-2-AP (KEAP1 antibody) at dilution of 1:6000 incubated at room temperature for 1.5 hours.



WB result of KEAP1 antibody (10503-2-AP; 1:3000; incubated at room temperature for 1.5 hours) with sh-Control and sh-KEAP1 transfected HEK-293 cells.



Immunofluorescent analysis of (4% PFA) fixed HepG2 cells using KEAP1 antibody (10503-2-AP) at dilution of 1:200 and CoraLite®488-Conjugated AffiniPure Goat Anti-Rabbit IgG(H+L).

Immunofluorescent analysis of (4% PFA) fixed U2OS cells using KEAP1 antibody (10503-2-AP) at dilution of 1:200 and CoraLite®488-Conjugated AffiniPure Goat Anti-Rabbit IgG(H+L), CL594-Phalloidin (red).