

Allgemeine Informationen

Katalog-Nr.:
10509-1-Ig

Größe:

150ul , Konzentration: 2000 µg/ml von396
Nanodrop und 707 µg/ml durch die
Bradford-Methode mit BSA als
Standard;

Wirt:

Kaninchen

Isotyp:

IgG

Immunogen Katalognummer:
AG0791

GenBank-Zugangsnummer:

BC005851

GeneID (NCBI):

Vollständiger Name:

Rho GDP dissociation inhibitor (GDI)
alpha

Berechnete Masse:

28 kDa

Beobachtete Masse:

28 kDa

Reinigungsmethode:

Protein-A-Reinigung

Empfohlene Verdünnungen:

WB 1:500-1:2000

IHC 1:20-1:200

Anwendungen

Geprüfte Anwendungen:

IHC, WB,ELISA

In Publikationen genannte Anwendungen:

IHC, WB

Getestete Reaktivität:

Human, Maus

Zitierte Arten:

Human, Maus, Ratte

**Hinweis-IHC: Antigendemaskierung mit TE-
Puffer pH 9,0 empfohlen. (*) Wahlweise
kann die Antigendemaskierung auch mit
Citratpuffer pH 6,0 erfolgen.**

Positivkontrollen:

WB : Jurkat-Zellen, A431-Zellen, HEK-293-Zellen,
HeLa-Zellen, HL-60-Zellen, Maus-Pankreasgewebe

IHC : humanes Mammakarzinomgewebe, humanes
Kolonkarzinomgewebe

Hintergrundinformationen

Rho GDP-dissociation inhibitor (RhoGDI), also called ARHGDI, is one member of ARHGDI, which is ubiquitously expressed and interacts with several Rho GTPases, mainly including RhoA, Rac1, and Cdc42. RhoGDI can inhibit nucleotide exchange and membrane association to downregulate the activities of Rho family GTPase. It is overexpressed in various human cancers. Activity of this protein is important in a variety of cellular processes, and it is overexpressed in various human cancers. Mutations in RhoGDI have been found in individuals with nephrotic syndrome, type 8.

Bemerkenswerte Veröffentlichungen

Verfasser	Pubmed ID	Journal	Anwendung
Wang Jing J	23028951	PLoS One	WB, IHC
Yu Lian	30326930	J Exp Clin Cancer Res	WB
Cheng Liu	25397718	J Agric Food Chem	WB

Lagerung

Lagerungsbedingungen:

Bei -20°C lagern. Nach dem Versand ein Jahr lang stabil

Lagerungspuffer:

PBS mit 0.02% Natriumazid und 50% Glycerin pH 7.3.

Aliquotieren ist nicht notwendig bei -20°C Lagerung

***** 20ul-Größen enthalten 0.1% BSA**

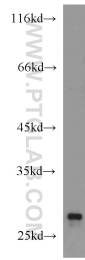
For technical support and original validation data for this product please contact:

T: 1 (888) 4PTGLAB (1-888-478-4522) (toll free
in USA), or 1(312) 455-8498 (outside USA)

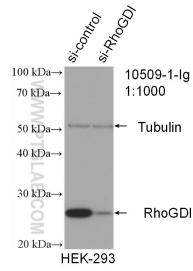
E: proteintech@ptglab.com
W: ptglab.com

This product is exclusively available under Proteintech Group brand and is not available to purchase from any other manufacturer.

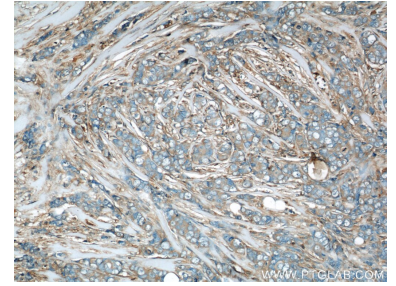
Ausgewählte Validierungsdaten



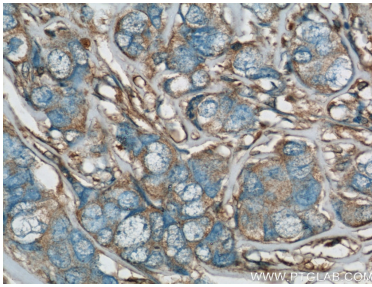
Jurkat cells were subjected to SDS PAGE followed by western blot with 10509-1-Ig (RhoGDI antibody) at dilution of 1:1000 incubated at room temperature for 1.5 hours.



WB result of RhoGDI antibody (10509-1-Ig; 1:1000; incubated at room temperature for 1.5 hours) with sh-Control and sh-RhoGDI transfected HEK-293 cells.



Immunohistochemical analysis of paraffin-embedded human breast cancer using 10509-1-Ig(RhoGDI antibody) at dilution of 1:50 (under 10x lens).



Immunohistochemical analysis of paraffin-embedded human breast cancer using 10509-1-Ig(RhoGDI antibody) at dilution of 1:50 (under 40x lens).