

Allgemeine Informationen

Katalog-Nr.:
10513-1-AP

Größe:
150ul , Konzentration: 500 µg/ml von Nanodrop und 267 µg/ml durch die Bradford-Methode mit BSA als Standard;

Wirt:
Kaninchen

Isotyp:
IgG

Immunogen Katalognummer:
AG0798

GenBank-Zugangsnummer:
BC007670

GeneID (NCBI):
4171

Vollständiger Name:
minichromosome maintenance complex component 2

Berechnete Masse:
102 kDa

Beobachtete Masse:
116-125 kDa

Reinigungsmethode:

Antigen-Affinitätsreinigung

Empfohlene Verdünnungen:

WB 1:500-1:3000
IP 0.5-4.0 µg für IP und 1:500-1:1000 für WB
IHC 1:20-1:200
IF 1:10-1:100

Anwendungen

Geprüfte Anwendungen:

IF, IHC, IP, WB, ELISA

In Publikationen genannte Anwendungen:

IF, IHC, IP, RIP, WB

Getestete Reaktivität:

Human, Maus, Ratte

Zitierte Arten:

Human, Maus, Ratte

Hinweis-IHC: Antigendemaskierung mit TE-Puffer pH 9,0 empfohlen. (*) Wahlweise kann die Antigendemaskierung auch mit Citratpuffer pH 6,0 erfolgen.

Positivkontrollen:

WB: HEK-293-Zellen, HeLa-Zellen, K-562-Zellen, PC-3-Zellen

IP: HEK-293-Zellen,

IHC: humanes Tonsillitisgewebe, humanes Plazenta-Gewebe

IF: HeLa-Zellen, humanes Gliomgewebe

Hintergrundinformationen

The MCM2-7 complex forms the core of the replicative helicase which acts as the molecular motor that uses ATP binding and hydrolysis to fuel the unwinding of double-stranded DNA at the replication fork in eukaryotes. This complex is the putative replicative helicase essential for 'once per cell cycle' DNA replication initiation and elongation in eukaryotic cells. MCM2, also named CDCL1 and BM28, is a human nuclear protein that plays an important role in 2 crucial steps of the cell cycle, namely, onset of DNA replication and cell division.

Bemerkenswerte Veröffentlichungen

Verfasser	Pubmed ID	Journal	Anwendung
Irina Vazquez-Villasenor	34536321	Eur J Neurosci	IF
Chun Pan	36115647	Toxicology	IHC
Xin Zhou	36243809	Cell Death Discov	WB,IHC,IF

Lagerung

Lagerungsbedingungen:

Bei -20°C lagern. Nach dem Versand ein Jahr lang stabil

Lagerungspuffer:

PBS mit 0.02% Natriumazid und 50% Glycerin pH 7.3.

Aliquotieren ist nicht notwendig bei -20°C Lagerung

***** 20ul-Größen enthalten 0.1% BSA**

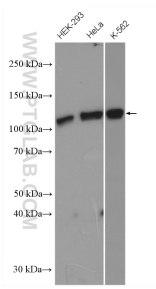
For technical support and original validation data for this product please contact:

T: 1 (888) 4PTGLAB (1-888-478-4522) (toll free in USA), or 1(312) 455-8498 (outside USA)

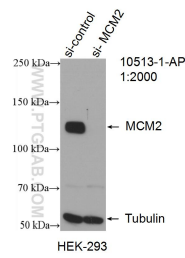
E: proteintech@ptglab.com
W: ptglab.com

This product is exclusively available under Proteintech Group brand and is not available to purchase from any other manufacturer.

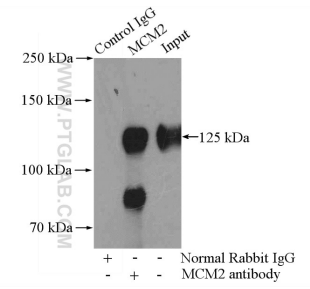
Ausgewählte Validierungsdaten



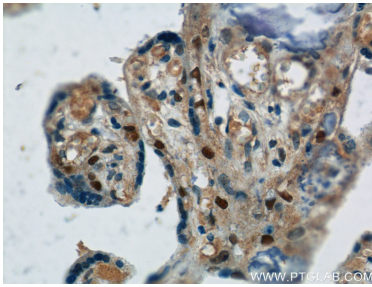
Various cells were subjected to SDS PAGE followed by western blot with 10513-1-AP (MCM2 antibody) at dilution of 1:1500 incubated at room temperature for 1.5 hours.



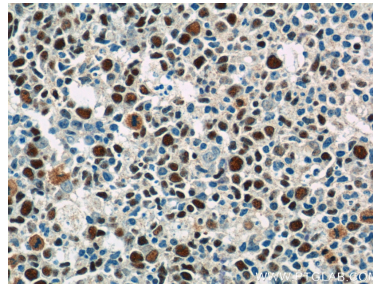
WB result of MCM2 antibody (10513-1-AP; 1:2000; incubated at room temperature for 1.5 hours) with sh-Control and sh-MCM2 transfected HEK-293 cells.



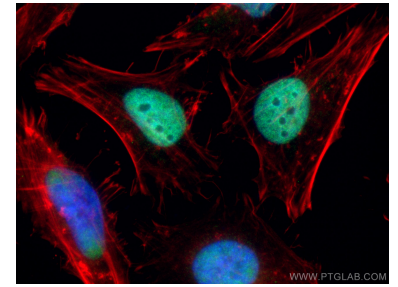
IP Result of anti-MCM2 (IP:10513-1-AP, 4ug; Detection:10513-1-AP 1:800) with HEK-293 cells lysate 2800ug.



Immunohistochemical analysis of paraffin-embedded human placenta tissue slide using 10513-1-AP (MCM2 Antibody) at dilution of 1:50 (under 40x lens).



Immunohistochemical analysis of paraffin-embedded human tonsillitis tissue slide using 10513-1-AP (MCM2 Antibody) at dilution of 1:50 (under 40x lens).



Immunofluorescent analysis of (4% PFA) fixed HeLa cells using MCM2 antibody (10513-1-AP) at dilution of 1:20 and CoraLite@488-Conjugated AffiniPure Goat Anti-Rabbit IgG(H+L), CL594-Phalloidin (red).