

Nur für Forschungszwecke

# PACSIN2 Polyklonaler Antikörper

Katalog-Nr.:10518-2-AP

Vorgestelltes Produkt

7 Publikationen



## Allgemeine Informationen

Katalog-Nr.:  
10518-2-AP

Größe:  
150ul, Konzentration: 400 µg/ml von  
Nanodrop und 200 µg/ml durch die  
Bradford-Methode mit BSA als  
Standard;

Wirt:  
Kaninchen

Isotyp:  
IgG

Immunogen Katalognummer:  
AG0809

GenBank-Zugangsnummer:  
BC008037

GeneID (NCBI):  
11252

Vollständiger Name:  
protein kinase C and casein kinase  
substrate in neurons 2

Berechnete Masse:  
56 kDa

Beobachtete Masse:  
60-65 kDa

Reinigungsmethode:

Antigen-Affinitätsreinigung

Empfohlene Verdünnungen:

WB 1:500-1:1000  
IP 0.5-4.0 µg für IP und 1:500-1:1000  
für WB  
IHC 1:20-1:200  
IF 1:50-1:500

## Anwendungen

Geprüfte Anwendungen:

IF, IHC, IP, WB, ELISA

In Publikationen genannte Anwendungen:

IF, WB

Getestete Reaktivität:

Human, Maus

Zitierte Arten:

Human, Maus, Zebrafisch

Positivkontrollen:

WB: NIH/3T3-Zellen, Mausherzgewebe,  
Mauslungengewebe

IP: NIH/3T3-Zellen,

IHC: humanes Mammakarzinomgewebe, humanes  
Hautgewebe

IF: NIH/3T3-Zellen,

**Hinweis-IHC: Antigendemaskierung mit TE-  
Puffer pH 9,0 empfohlen. (\*) Wahlweise  
kann die Antigendemaskierung auch mit  
Citratpuffer pH 6,0 erfolgen.**

## Hintergrundinformationen

Peripheral membrane proteins of the Bin/amphiphysin/Rvs (BAR) and Fer-CIP4 homology-BAR (F-BAR) family participate in cellular membrane trafficking (PMID: 19549836). PACSIN2 (also known as syndapin-2) is a member of the protein kinase C and casein kinase substrate in neurons (PACSIN) family, which are membrane-binding proteins characterized by an amino-terminal F-BAR domain. PACSIN2 plays a role in intracellular vesicle-mediated transport. It is involved in the endocytosis of cell-surface receptors like the EGF receptor, contributing to its internalization (PMID: 23129763). PACSIN2 also has a role in caveolae membrane sculpting (PMID: 21610094).

## Bemerkenswerte Veröffentlichungen

Verfasser	Pubmed ID	Journal	Anwendung
Simone Laura C LC	24040268	PLoS One	WB
X Liu	36267015	J Dent Res	WB
Claudia Mattheaus	36433988	Nat Commun	WB,IF

## Lagerung

Lagerungsbedingungen:

Bei -20°C lagern. Nach dem Versand ein Jahr lang stabil

Lagerungspuffer:

PBS mit 0.02% Natriumazid und 50% Glycerin pH 7.3.

Aliquotieren ist nicht notwendig bei -20°C Lagerung

\*\*\* 20ul-Größen enthalten 0.1% BSA

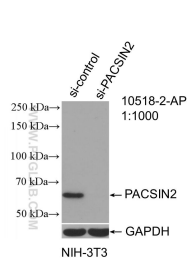
For technical support and original validation data for this product please contact:

T: 1 (888) 4PTGLAB (1-888-478-4522) (toll free  
in USA), or 1(312) 455-8498 (outside USA)

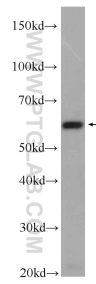
E: proteintech@ptglab.com  
W: ptglab.com

This product is exclusively available under Proteintech  
Group brand and is not available to purchase from any  
other manufacturer.

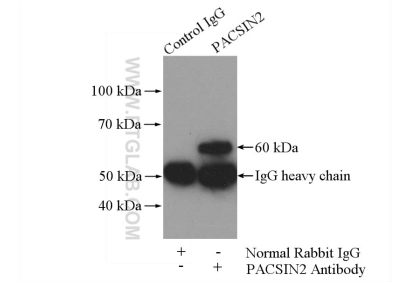
## Ausgewählte Validierungsdaten



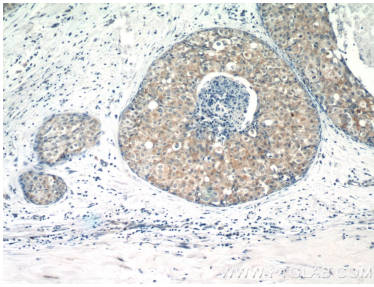
WB result of PACSIN2 antibody (10518-2-AP; 1:1000; incubated at room temperature for 1.5 hours) with sh-Control and sh-PACSIN2 transfected NIH/3T3 cells.



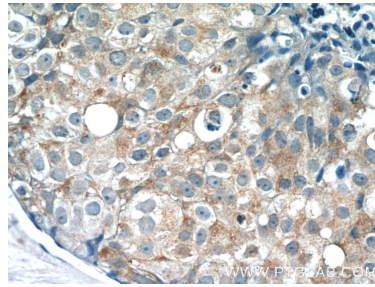
NIH/3T3 cells were subjected to SDS PAGE followed by western blot with 10518-2-AP (PACSIN2 Antibody) at dilution of 1:600 incubated at room temperature for 1.5 hours.



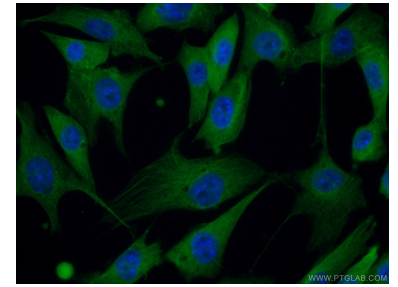
IP Result of anti-PACSIN2 (IP:10518-2-AP, 4ug; Detection:10518-2-AP 1:500) with NIH/3T3 cells lysate 1200ug.



Immunohistochemical analysis of paraffin-embedded human breast cancer tissue slide using 10518-2-AP (PACSIN2 Antibody) at dilution of 1:400 (under 10x lens).



Immunohistochemical analysis of paraffin-embedded human breast cancer tissue slide using 10518-2-AP (PACSIN2 Antibody) at dilution of 1:400 (under 40x lens).



Immunofluorescent analysis of (10% Formaldehyde) fixed NIH/3T3 cells using 10518-2-AP (PACSIN2 antibody) at dilution of 1:50 and Alexa Fluor 488-conjugated AffiniPure Goat Anti-Rabbit IgG(H+L).