

Nur für Forschungszwecke

# RRM1 Polyklonaler Antikörper

Katalog-Nr.:10526-1-AP

Vorgestelltes Produkt

46 Publikationen



## Allgemeine Informationen

Katalog-Nr.:  
10526-1-AP

Größe:  
150ul , Konzentration: 400 µg/ml von  
Nanodrop und 220 µg/ml durch die  
Bradford-Methode mit BSA als  
Standard;

Wirt:  
Kaninchen

Isotyp:  
IgG

Immunogen Katalognummer:  
AG0789

GenBank-Zugangsnummer:  
BC006498

GeneID (NCBI):  
6240

Vollständiger Name:  
ribonucleotide reductase M1

Berechnete Masse:  
90 kDa

Beobachtete Masse:  
90 kDa

Reinigungsmethode:  
Antigen-Affinitätsreinigung

Empfohlene Verdünnungen:  
WB 1:2000-1:16000  
IP 0.5-4.0 ug für IP und 1:500-1:1000  
für WB  
IHC 1:100-1:600  
IF 1:50-1:500

## Anwendungen

Geprüfte Anwendungen:  
FC, IF, IHC, IP, WB, ELISA

In Publikationen genannte Anwendungen:  
IF, IHC, IP, WB

Getestete Reaktivität:  
Affe, Human, Maus, Ratte

Zitierte Arten:  
Human, Krallenfrosch (Xenopus)

**Hinweis-IHC: Antigenmaskierung mit TE-  
Puffer pH 9,0 empfohlen. (\*) Wahlweise  
kann die Antigenmaskierung auch mit  
Citratpuffer pH 6,0 erfolgen.**

Positivkontrollen:

WB : A431-Zellen, A549-Zellen, BxPC-3-Zellen, HEK-  
293-Zellen, HeLa-Zellen, K-562-Zellen, U-251-Zellen

IP : K-562-Zellen,

IHC : humanes Mammakarzinomgewebe, humanes  
Lungenkarzinomgewebe

IF : HepG2-Zellen, MCF-7-Zellen

## Hintergrundinformationen

Ribonucleoside-diphosphate reductase functions as a heterodimer of a large and a small subunits in deoxyribonucleotide synthesis. RRM1 constitutes to the large subunit (R1) of ribonucleotide reductase, and it can either form heterodimer with small subunit RRM or RRM2B(PMID:16376858). RRM1 provides the precursors necessary for DNA synthesis. RRM1 can not be detected in quiescent cells, while its mRNA and protein are present throughout the cell cycle in cycling cells(PMID:8188248). Researches showed that RRM1 is involved in carcinogenesis, tumor progression, and the resistance of non-small-cell lung cancer (NSCLC) to treatment. Low level expression of RRM1 in NSCLC is associated with poor survival(PMID:17314339).

## Bemerkenswerte Veröffentlichungen

Verfasser	Pubmed ID	Journal	Anwendung
Yukio Watanabe	25257380	Histopathology	IHC
Martin Kerr	25224279	Clin Cancer Res	WB
Csaba Tóth	28949378	Int J Mol Med	IHC

## Lagerung

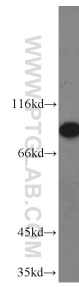
Lagerungsbedingungen:  
Bei -20°C lagern. Nach dem Versand ein Jahr lang stabil  
Lagerungspuffer:  
PBS mit 0.02% Natriumazid und 50% Glycerin pH 7.3.  
Aliquotieren ist nicht notwendig bei -20°C Lagerung

\*\*\* 20ul-Größen enthalten 0.1% BSA

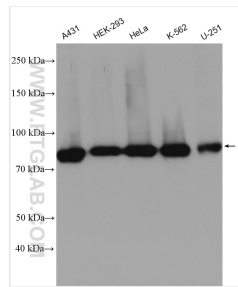
For technical support and original validation data for this product please contact:  
T: 1 (888) 4PTGLAB (1-888-478-4522) (toll free in USA), or 1(312) 455-8498 (outside USA)  
E: proteintech@ptglab.com  
W: ptglab.com

This product is exclusively available under Proteintech Group brand and is not available to purchase from any other manufacturer.

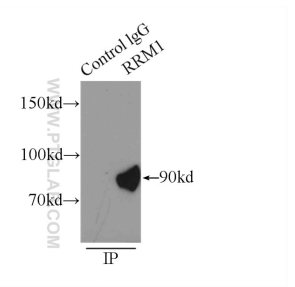
## Ausgewählte Validierungsdaten



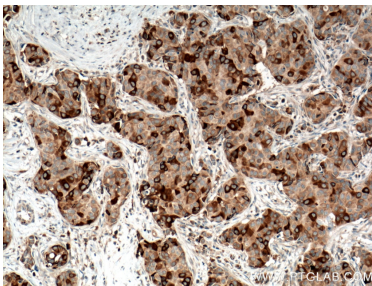
HeLa cells were subjected to SDS PAGE followed by western blot with 10526-1-AP (RRM1 antibody) at dilution of 1:2000 incubated at room temperature for 1.5 hours.



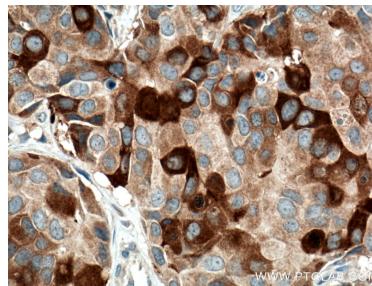
A431 cells were subjected to SDS PAGE followed by western blot with 10526-1-AP (RRM1 antibody) at dilution of 1:8000 incubated at room temperature for 1.5 hours.



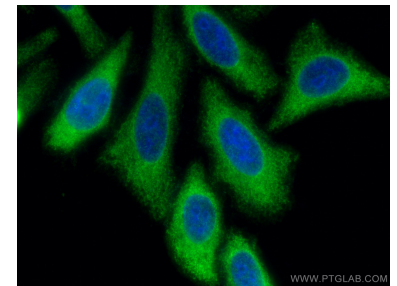
IP Result of anti-RRM1 (IP:10526-1-AP, 5ug; Detection:10526-1-AP 1:800) with K-562 cells lysate 8000ug.



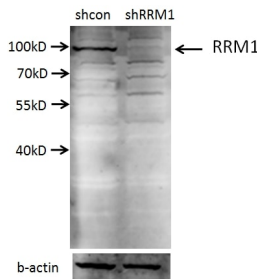
Immunohistochemical analysis of paraffin-embedded human breast cancer tissue slide using 10526-1-AP (RRM1 antibody) at dilution of 1:200 (under 10x lens. Heat mediated antigen retrieval with Tris-EDTA buffer (pH 9.0).



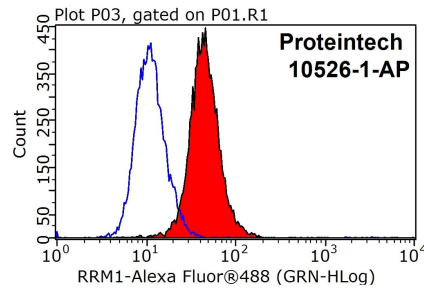
Immunohistochemical analysis of paraffin-embedded human breast cancer tissue slide using 10526-1-AP (RRM1 antibody) at dilution of 1:200 (under 40x lens. Heat mediated antigen retrieval with Tris-EDTA buffer (pH 9.0).



Immunofluorescent analysis of (-20°C Methanol) fixed HepG2 cells using RRM1 antibody (10526-1-AP) at dilution of 1:200 and CoraLite®488-Conjugated AffiniPure Goat Anti-Rabbit IgG(H+L).



A549 cells (shcontrol and shRNA of RRM1) were subjected to SDS PAGE followed by western blot with 10526-1-AP (RRM1 antibody) at dilution of 1:2000. .



1X10<sup>6</sup> HeLa cells were stained with .2ug RRM1 antibody (10526-1-AP, red) and control antibody (blue). Cells were fixed with 4% PFA and permeabilized with 0.1% Triton X-100. Alexa Fluor 488-conjugated AffiniPure Goat Anti-Rabbit IgG(H+L) with dilution 1:1000.