

Nur für Forschungszwecke

# IL-21R Polyklonaler Antikörper

Katalog-Nr.:10533-1-AP

2 Publikationen



## Allgemeine Informationen

<b>Katalog-Nr.:</b> 10533-1-AP	<b>GenBank-Zugangsnummer:</b> BC004348	<b>Reinigungsmethode:</b> Antigen-Affinitätsreinigung
<b>Größe:</b> 150ul, Konzentration: 550 µg/ml von Nanodrop und 367 µg/ml durch die Bradford-Methode mit BSA als Standard;	<b>GeneID (NCBI):</b> 50615	<b>Empfohlene Verdünnungen:</b> WB 1:1000-1:5000 IHC 1:50-1:500 IF 1:10-1:100
<b>Wirt:</b> Kaninchen	<b>Vollständiger Name:</b> interleukin 21 receptor	
<b>Isotyp:</b> IgG	<b>Berechnete Masse:</b> 59 kDa	
<b>Immunogen Katalognummer:</b> AG0762	<b>Beobachtete Masse:</b> 68-70 kDa	

## Anwendungen

<b>Geprüfte Anwendungen:</b> FC, IF, IHC, WB, ELISA	<b>Positivkontrollen:</b> WB : COLO 320-Zellen, K-562-Zellen, Maus-Thymusgewebe, Raji-Zellen, Ratten-Thymusgewebe IHC : humanes Lymphomgewebe, IF : COLO 320-Zellen,
<b>In Publikationen genannte Anwendungen:</b> IF, IHC, WB	
<b>Getestete Reaktivität:</b> Human, Maus, Ratte	
<b>Zitierte Arten:</b> Human	
<b>Hinweis-IHC: Antigendemaskierung mit TE-Puffer pH 9,0 empfohlen. (*) Wahlweise kann die Antigendemaskierung auch mit Citratpuffer pH 6,0 erfolgen.</b>	

## Hintergrundinformationen

IL21R, a receptor for interleukin-21, belongs to the type I cytokine receptor family. IL21R has been shown to form a heterodimeric receptor complex with the common gamma-chain, a receptor subunit also shared by the receptors for interleukin 2, 4, 7, 9, and 15. This receptor transduces the growth promoting signal of IL21, and is important for the proliferation and differentiation of T cells, B cells, and natural killer (NK) cells. The ligand binding of this receptor leads to the activation of multiple downstream signaling molecules, including JAK1, JAK3, STAT1, and STAT3.

## Bemerkenswerte Veröffentlichungen

Verfasser	Pubmed ID	Journal	Anwendung
Bruna Cristina Falavinha	35047041	Stem Cells Int	WB,IF
Yao Yao	32719094	J Immunother Cancer	IHC

## Lagerung

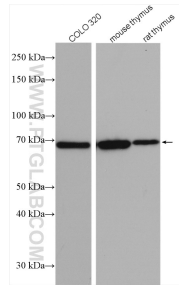
**Lagerungsbedingungen:**  
Bei -20°C lagern. Nach dem Versand ein Jahr lang stabil  
**Lagerungspuffer:**  
PBS mit 0.02% Natriumazid und 50% Glycerin pH 7.3.  
Aliquotieren ist nicht notwendig bei -20°C Lagerung

\*\*\* 20ul-Größen enthalten 0.1% BSA

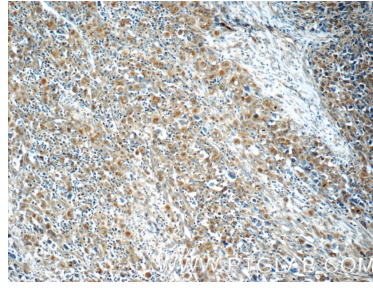
For technical support and original validation data for this product please contact:  
T: 1 (888) 4PTGLAB (1-888-478-4522) (toll free in USA), or 1(312) 455-8498 (outside USA)  
E: proteintech@ptglab.com  
W: ptglab.com

This product is exclusively available under Proteintech Group brand and is not available to purchase from any other manufacturer.

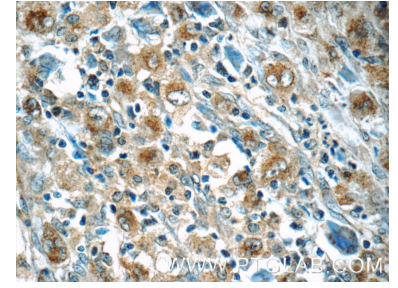
## Ausgewählte Validierungsdaten



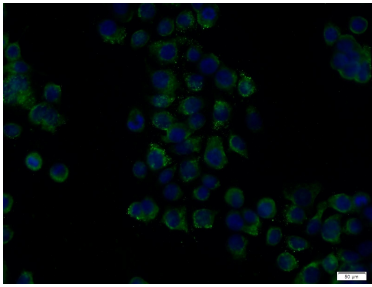
Various lysates were subjected to SDS PAGE followed by western blot with 10533-1-AP (IL21R antibody) at dilution of 1:2500 incubated at room temperature for 1.5 hours.



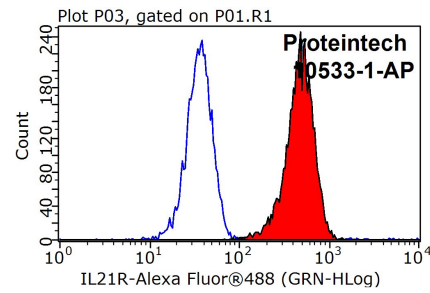
Immunohistochemical analysis of paraffin-embedded human lymphoma tissue slide using 10533-1-AP (IL21R Antibody) at dilution of 1:50 (under 10x lens).



Immunohistochemical analysis of paraffin-embedded human lymphoma tissue slide using 10533-1-AP (IL21R Antibody) at dilution of 1:50 (under 40x lens).



Immunofluorescent analysis of COLO 320 cells using 10533-1-AP (IL21R antibody) at dilution of 1:25 and Alexa Fluor 488-conjugated AffiniPure Goat Anti-Rabbit IgG(H+L).



$1 \times 10^6$  K-562 cells were stained with 0.2ug IL21R antibody (10533-1-AP, red) and control antibody (blue). Fixed with 90% MeOH blocked with 3% BSA (30 min). Alexa Fluor 488-conjugated AffiniPure Goat Anti-Rabbit IgG(H+L) with dilution 1:1000.