

Allgemeine Informationen

Katalog-Nr.: 10547-1-AP	GenBank-Zugangsnummer: BC004201	Reinigungsmethode: Antigen-Affinitätsreinigung
Größe: 150ul, Konzentration: 400 µg/ml von Nanodrop;	GeneID (NCBI): 3663	Empfohlene Verdünnungen: WB 1:2000-1:10000 IP 0.5-4.0 ug für IP und 1:200-1:1000 für WB
Wirt: Kaninchen	Vollständiger Name: interferon regulatory factor 5	IHC 1:50-1:500 IF 1:50-1:500
Isotyp: IgG	Berechnete Masse: 56 kDa	
Immunogen Katalognummer: AG0841	Beobachtete Masse: 56 kDa	

Anwendungen

Geprüfte Anwendungen:
FC, IF, IHC, IP, WB, ELISA

In Publikationen genannte Anwendungen:
FC, IF, IHC, IP, WB

Getestete Reaktivität:
Human, Maus, Ratte

Zitierte Arten:
Human, Maus, Ratte

Hinweis-IHC: Antigenmaskierung mit TE-Puffer pH 9,0 empfohlen. (*) Wahlweise kann die Antigenmaskierung auch mit Citratpuffer pH 6,0 erfolgen.

Positivkontrollen:

WB: THP-1-Zellen, Jurkat-Zellen, SH-SY5Y-Zellen

IP: HeLa-Zellen,

IHC: humanes Prostatakarzinomgewebe, humanes Mammakarzinomgewebe

IF: HepG2-Zellen,

Hintergrundinformationen

IRF5, also named as SLEB10, contains one IRF tryptophan pentad repeat DNA-binding domain and belongs to the IRF family. It is a transcription factor involved in the induction of interferons IFNA and INFB and inflammatory cytokines upon virus infection. It is activated by TLR7 or TLR8 signaling. Genetic variations in IRF5 are associated with susceptibility to inflammatory bowel disease type 14 (IBD14) and systemic lupus erythematosus type 10 (SLEB10). Alternative splice variant encoding different isoforms exist. Catalog# 10547-1-AP is a rabbit polyclonal antibody raised against the C-terminal of human IRF5.

Bemerkenswerte Veröffentlichungen

Verfasser	Pubmed ID	Journal	Anwendung
Stephanie Georgina Dakin	29118051	Br J Sports Med	IF
Deborah Cohen	36331667	Neurochem Res	WB
Hong Lu	31177020	Phytomedicine	WB,IF

Lagerung

Lagerungsbedingungen:

Bei -20°C lagern. Nach dem Versand ein Jahr lang stabil

Lagerungspuffer:

PBS mit 0.02% Natriumazid und 50% Glycerin pH 7.3.

Aliquotieren ist nicht notwendig bei -20°C Lagerung

***** 20ul-Größen enthalten 0.1% BSA**

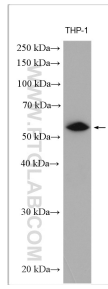
For technical support and original validation data for this product please contact:

T: 1 (888) 4PTGLAB (1-888-478-4522) (toll free in USA), or 1(312) 455-8498 (outside USA)

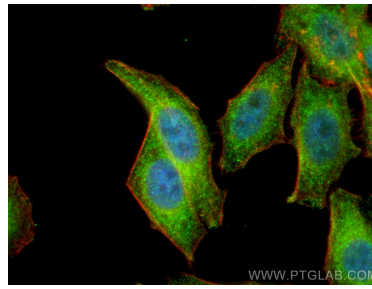
E: proteintech@ptglab.com
W: ptglab.com

This product is exclusively available under Proteintech Group brand and is not available to purchase from any other manufacturer.

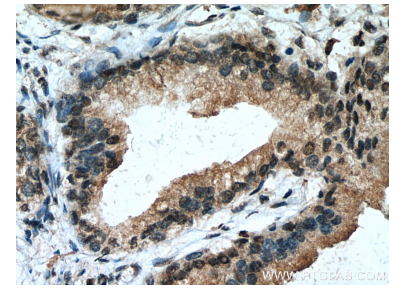
Ausgewählte Validierungsdaten



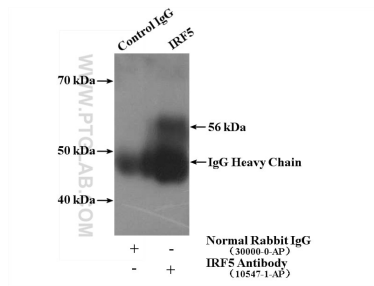
THP-1 cells were subjected to SDS PAGE followed by western blot with 10547-1-AP (IRF5 antibody) at dilution of 1:5000 incubated at room temperature for 1.5 hours.



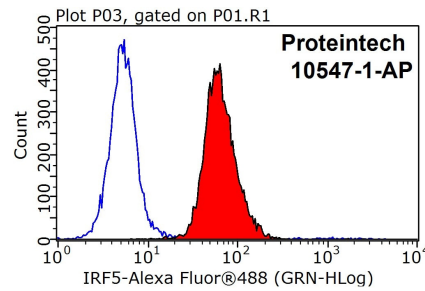
Immunofluorescent analysis of (4% PFA) fixed HepG2 cells using IRF5 antibody (10547-1-AP) at dilution of 1:200 and CoraLite@488-Conjugated AffiniPure Goat Anti-Rabbit IgG(H+L), CL594-Phalloidin (red).



Immunohistochemical analysis of paraffin-embedded human prostate cancer tissue slide using 10547-1-AP (IRF5 antibody) at dilution of 1:200 (under 40x lens). Heat mediated antigen retrieval with Tris-EDTA buffer (pH 9.0).



IP Result of anti-IRF5 (IP:10547-1-AP, 4ug; Detection:10547-1-AP 1:300) with HeLa cells lysate 1600ug.



1x10⁶ HepG2 cells were stained with 0.2ug IRF5 antibody (10547-1-AP, red) and control antibody (blue). Fixed with 90% MeOH blocked with 3% BSA (30 min). Alexa Fluor 488-conjugated AffiniPure Goat Anti-Rabbit IgG(H+L) with dilution 1:1000.