

Nur für Forschungszwecke

NCL Polyklonaler Antikörper

Katalog-Nr.:10556-1-AP

Vorgestelltes Produkt

30 Publikationen



Allgemeine Informationen

Katalog-Nr.: 10556-1-AP	GenBank-Zugangsnummer: BC006494	Reinigungsmethode: Antigen-Affinitätsreinigung
Größe: 150ul , Konzentration: 750 µg/ml von Nanodrop;	GeneID (NCBI): 4691	Empfohlene Verdünnungen: WB 1:5000-1:50000
Wirt: Kaninchen	Vollständiger Name: nucleolin	IP 0.5-4.0 ug für IP und 1:500-1:2000 für WB
Isotyp: IgG	Berechnete Masse: 76 kDa	IHC 1:50-1:500
Immunogen Katalognummer: AG0859	Beobachtete Masse: 100-110 kDa	IF 1:500-1:2000

Anwendungen

Geprüfte Anwendungen:
FC, IF, IHC, IP, WB, ELISA

In Publikationen genannte Anwendungen:
IF, IHC, IP, WB

Getestete Reaktivität:
Human, Maus, Ratte

Zitierte Arten:
Human, Maus, Ratte

Hinweis-IHC: Antigenmaskierung mit TE-Puffer pH 9,0 empfohlen. (*) Wahlweise kann die Antigenmaskierung auch mit Citratpuffer pH 6,0 erfolgen.

Positivkontrollen:

WB : HEK-293-Zellen, HeLa-Zellen, Rattenhirngewebe

IP : HeLa-Zellen,

IHC : humanes Prostatakarzinomgewebe, humanes Zervixkarzinomgewebe

IF : HEK-293-Zellen,

Hintergrundinformationen

Nucleolin, also known as C23, involved in the control of transcription of ribosomal RNA (rRNA) genes by RNA polymerase I, in nucleocytoplasmic transportation of ribosomal components, and in ribosome maturation and assembly. It associated with intranucleolar chromatin and pre-ribosomal particles, and induced chromatin decondensation by binding to histone H1. Also it has a role in the process of transcriptional elongation. Whilst mammalian nucleolin has a predicted molecular mass of approximately 77 kDa, the apparent molecular mass is between 100 and 110 kDa, and has been attributed to the amino acid composition of the N-terminal domain, which is highly phosphorylated. (PMID: 15925566)

Bemerkenswerte Veröffentlichungen

Verfasser	Pubmed ID	Journal	Anwendung
Didi-Andreas Song	36180036	Mol Cell Proteomics	IF
Chunming Gu	36109490	Oncogenesis	WB,IHC,IF,IP
Ella Doron-Mandel	34515347	EMBO J	IF

Lagerung

Lagerungsbedingungen:

Bei -20°C lagern. Nach dem Versand ein Jahr lang stabil

Lagerungspuffer:

PBS mit 0.02% Natriumazid und 50% Glycerin pH 7.3.

Aliquotieren ist nicht notwendig bei -20°C Lagerung

***** 20ul-Größen enthalten 0.1% BSA**

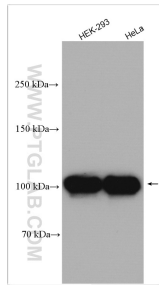
For technical support and original validation data for this product please contact:

T: 1 (888) 4PTGLAB (1-888-478-4522) (toll free in USA), or 1(312) 455-8498 (outside USA)

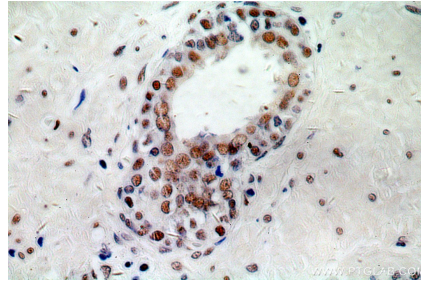
E: proteintech@ptglab.com
W: ptglab.com

This product is exclusively available under Proteintech Group brand and is not available to purchase from any other manufacturer.

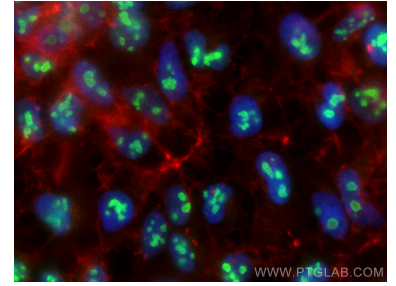
Ausgewählte Validierungsdaten



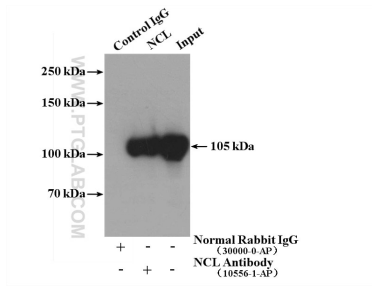
Various lysates were subjected to SDS PAGE followed by western blot with 10556-1-AP (NCL antibody) at dilution of 1:10000 incubated at room temperature for 1.5 hours.



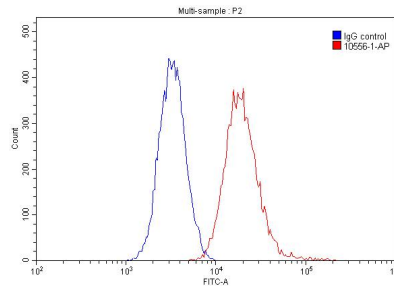
Immunohistochemical analysis of paraffin-embedded human prostate cancer using 10556-1-AP (NCL antibody) at dilution of 1:100 (under 40x lens).



Immunofluorescent analysis of (4% PFA) fixed HEK-293 cells using NCL antibody (10556-1-AP) at dilution of 1:1000 and CoraLite® 488-Conjugated AffiniPure Goat Anti-Rabbit IgG(H+L), CL594-Phalloidin (red).



IP Result of anti-NCL (IP:10556-1-AP, 4ug; Detection:10556-1-AP 1:1000) with HeLa cells lysate 3200ug.



1x10⁶ HeLa cells were stained with 0.20ug NCL antibody (10556-1-AP, red) and control antibody (blue). Fixed with 90% MeOH.