

## Allgemeine Informationen

Katalog-Nr.:  
10585-1-AP

Größe:  
150ul, Konzentration: 267 µg/ml  
durch die Bradford-Methode mit BSA  
als Standard;

Wirt:  
Kaninchen

Isotyp:  
IgG

Immunogen Katalognummer:  
AG0934

GenBank-Zugangsnummer:  
BC006370

GeneID (NCBI):  
27130

Vollständiger Name:  
inversin

Berechnete Masse:  
118 kDa, 100 kDa

Beobachtete Masse:  
100-110 kDa

Reinigungsmethode:

Antigen-Affinitätsreinigung

Empfohlene Verdünnungen:

WB 1:200-1:1000

IHC 1:20-1:200

IF 1:10-1:100

## Anwendungen

Geprüfte Anwendungen:

IF, IHC, WB, ELISA

In Publikationen genannte Anwendungen:

FC, IF, IHC, WB

Getestete Reaktivität:

Human, Maus, Ratte

Zitierte Arten:

Human, Maus, Ratte

**Hinweis-IHC: Antigenmaskierung mit TE-Puffer pH 9,0 empfohlen. (\*) Wahlweise kann die Antigenmaskierung auch mit Citratpuffer pH 6,0 erfolgen.**

Positivkontrollen:

WB : MCF-7-Zellen, HepG2-Zellen, Jurkat-Zellen, K-562-Zellen, LO2-Zellen, Maus-Skelettmuskelgewebe, Raji-Zellen, SH-SY5Y-Zellen

IHC : humanes Mammakarzinomgewebe, humanes Leberzirrhosegewebe

IF : HeLa-Zellen, hTERT-RPE1-Zellen

## Hintergrundinformationen

INVS, short for inversin, plays a role in primary cilia function and involvement in the cell cycle. It is required for normal renal development and establishment of left-right axis. INVS may involve in Wnt signaling pathways by acting as a molecular switch between different them. Inhibits the canonical Wnt pathway by targeting cytoplasmic disheveled (DVL1) for degradation by the ubiquitin-proteasome. This suggests that it is required in renal development to oppose the repression of terminal differentiation of tubular epithelial cells by Wnt signaling. This antibody is a rabbit polyclonal antibody raised against part of N-terminus of human INVS. The calculated molecular weight of INVS is 80 kDa, but the modified INVS protein is about 100-110 kDa.

## Bemerkenswerte Veröffentlichungen

Verfasser	Pubmed ID	Journal	Anwendung
Machteld M Oud	24677454	Am J Med Genet A	IF
Linxi Li	30808893	Cell Death Dis	WB
Ankan Gupta	35143420	JCI Insight	FC

## Lagerung

Lagerungsbedingungen:

Bei -20°C lagern. Nach dem Versand ein Jahr lang stabil

Lagerungspuffer:

PBS mit 0.02% Natriumazid und 50% Glycerin pH 7.3.

Aliquotieren ist nicht notwendig bei -20°C Lagerung

\*\*\* 20ul-Größen enthalten 0.1% BSA

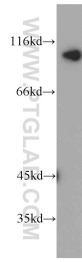
For technical support and original validation data for this product please contact:

T: 1 (888) 4PTGLAB (1-888-478-4522) (toll free in USA), or 1(312) 455-8498 (outside USA)

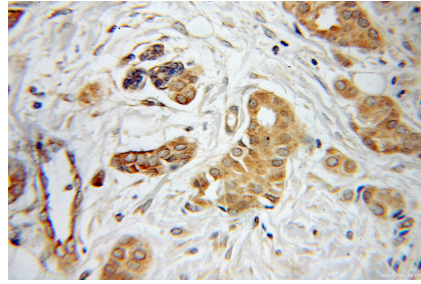
E: [proteintech@ptglab.com](mailto:proteintech@ptglab.com)  
W: [ptglab.com](http://ptglab.com)

This product is exclusively available under Proteintech Group brand and is not available to purchase from any other manufacturer.

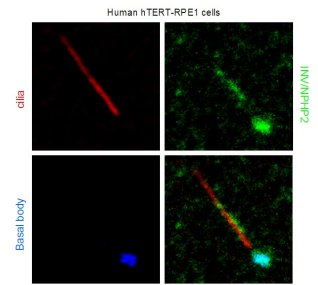
## Ausgewählte Validierungsdaten



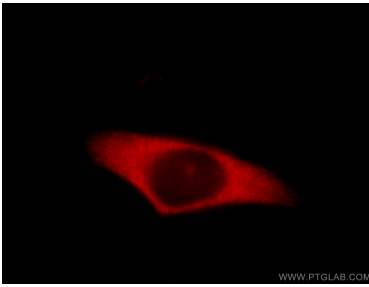
MCF7 cells were subjected to SDS PAGE followed by western blot with 10585-1-AP (INVS antibody) at dilution of 1:100 incubated at room temperature for 1.5 hours.



Immunohistochemical analysis of paraffin-embedded human breast cancer using 10585-1-AP (INVS antibody) at dilution of 1:100 (under 25x lens).



IF result from Dr. Corbit, Kevin. anti-INVS (also named as NPHP2; 10585-1-AP) marks the 'inversin compartment' and basal bodies of Human hTERT-RPE1 cells.



Immunofluorescent analysis of HeLa cells, using INVS antibody 10585-1-AP at 1:25 dilution and Rhodamine-labeled goat anti-rabbit IgG (red).