

Nur für Forschungszwecke

# RBM15 Polyklonaler Antikörper

Katalog-Nr.:10587-1-AP

Vorgestelltes Produkt

29 Publikationen



## Allgemeine Informationen

<b>Katalog-Nr.:</b> 10587-1-AP	<b>GenBank-Zugangsnummer:</b> BC006397	<b>Reinigungsmethode:</b> Antigen-Affinitätsreinigung
<b>Größe:</b> 150ul, Konzentration: 1000 µg/ml von64783	<b>GeneID (NCBI):</b> 64783	<b>Empfohlene Verdünnungen:</b> WB 1:2000-1:16000
<b>Nanodrop:</b>	<b>Vollständiger Name:</b> RNA binding motif protein 15	IP 0.5-4.0 ug für IP und 1:500-1:1000 für WB
<b>Wirt:</b> Kaninchen	<b>Berechnete Masse:</b> 105 kDa	IHC 1:50-1:500
<b>Isotyp:</b> IgG	<b>Beobachtete Masse:</b> 100-107 kDa	IF 1:50-1:500
<b>Immunogen Katalognummer:</b> AG0938		

## Anwendungen

<b>Geprüfte Anwendungen:</b> IF, IHC, IP, WB, ELISA	<b>Positivkontrollen:</b> WB : SW480-Zellen, HEK-293-Zellen
<b>In Publikationen genannte Anwendungen:</b> CoIP, IF, IHC, IP, RIP, WB	IP : HEK-293-Zellen,
<b>Getestete Reaktivität:</b> Human, Maus, Ratte	IHC : humanes Mammakarzinomgewebe,
<b>Zitierte Arten:</b> Human, Maus, Ratte	IF : HepG2-Zellen,
<b>Hinweis-IHC: Antigenmaskierung mit TE-Puffer pH 9,0 empfohlen. (*) Wahlweise kann die Antigenmaskierung auch mit Citratpuffer pH 6,0 erfolgen.</b>	

## Hintergrundinformationen

RNA-binding motif protein 15 (RBM15) belongs to the SPEN protein family, which have repressor function in several signaling pathway, and may bind to RNA through interaction with spliceosome components. It was first described as a 5' translocation partner of the MAL gene in t(1,22)(p13;q13) infant acute megakaryocytic leukemia, and it functions in murine hematopoiesis through modulating Notch-induced transcriptional activation, which play crucial roles in leukemogenesis. Decreasing RBM15 levels with RNA interference could inhibit the growth and proliferation, block the cell cycle, and induce apoptosis in CML cells.

## Bemerkenswerte Veröffentlichungen

Verfasser	Pubmed ID	Journal	Anwendung
Vladimir Majerciak	25234929	RNA	WB
Zhenwei Li	34825733	J Clin Lab Anal	WB
Fanhua Kong	36434140	Discov Oncol	WB

## Lagerung

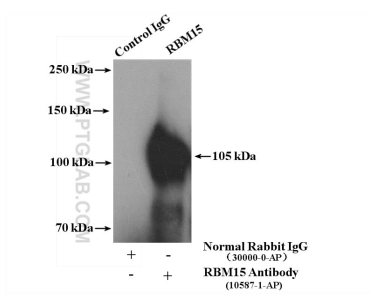
**Lagerungsbedingungen:**  
Bei -20°C lagern. Nach dem Versand ein Jahr lang stabil  
**Lagerungspuffer:**  
PBS mit 0.02% Natriumazid und 50% Glycerin pH 7.3.  
Aliquotieren ist nicht notwendig bei -20°C Lagerung

\*\*\* 20ul-Größen enthalten 0.1% BSA

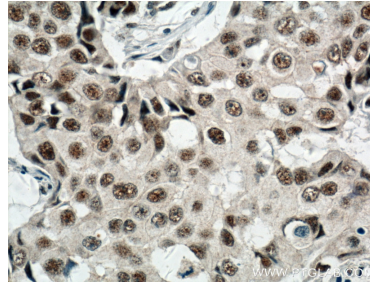
For technical support and original validation data for this product please contact:  
T: 1 (888) 4PTGLAB (1-888-478-4522) (toll free in USA), or 1(312) 455-8498 (outside USA)  
E: proteintech@ptglab.com  
W: ptglab.com

This product is exclusively available under Proteintech Group brand and is not available to purchase from any other manufacturer.

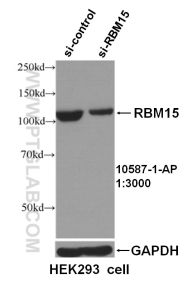
## Ausgewählte Validierungsdaten



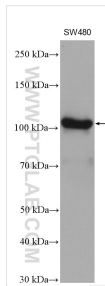
IP result of anti-RBM15 (IP:10587-1-AP, 4ug; Detection:10587-1-AP 1:500) with HEK-293 cells lysate 2600 ug.



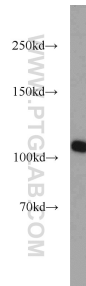
Immunohistochemical analysis of paraffin-embedded human breast cancer tissue slide using 10587-1-AP (RBM15 antibody) at dilution of 1:200 (under 40x lens. Heat mediated antigen retrieval with Tris-EDTA buffer (pH 9.0).



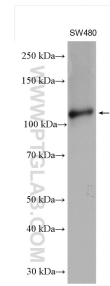
WB result of RBM15 antibody (10587-1-AP, 1:3000) with si-control and si-RBM15 transfected HEK293 cells.



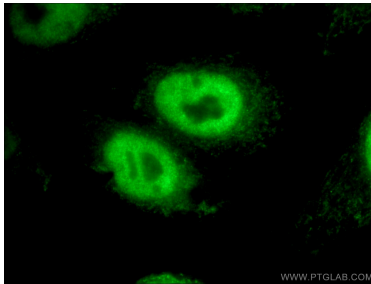
SW480 cells were subjected to SDS PAGE followed by western blot with 10587-1-AP (RBM15 antibody) at dilution of 1:8000 incubated at room temperature for 1.5 hours.



HEK-293 cells were subjected to SDS PAGE followed by western blot with 10587-1-AP (RBM15 antibody) at dilution of 1:1000 incubated at room temperature for 1.5 hours.



SW480 cells were subjected to SDS PAGE followed by western blot with 10587-1-AP (RBM15 antibody) at dilution of 1:8000 incubated at room temperature for 1.5 hours.



Immunofluorescent analysis of (4% PFA) fixed HepG2 cells using 10587-1-AP (RBM15 antibody) at dilution of 1:50 and Alexa Fluor 488-conjugated AffiniPure Goat Anti-Rabbit IgG(H+L).