

Nur für Forschungszwecke

Cytokeratin 6A Polyklonaler Antikörper



Katalog-Nr.:10590-1-AP

10 Publikationen

Allgemeine Informationen

Katalog-Nr.: 10590-1-AP	GenBank-Zugangsnummer: BC008807	Reinigungsmethode: Antigen-Affinitätsreinigung
Größe: 150ul , Konzentration: 1000 µg/ml von3853 Nanodrop und 433 µg/ml durch die Bradford-Methode mit BSA als Standard;	GeneID (NCBI): Vollständiger Name: keratin 6A	Empfohlene Verdünnungen: WB 1:10000-1:50000 IHC 1:200-1:800 IF 1:200-1:800
Wirt: Kaninchen	Berechnete Masse: 60 kDa	
Isotyp: IgG	Beobachtete Masse: 56 kDa	
Immunogen Katalognummer: AG0882		

Anwendungen

Geprüfte Anwendungen:

FC, IF, IHC, WB, ELISA

In Publikationen genannte Anwendungen:

IF, IHC, WB

Getestete Reaktivität:

Human, Maus, Ratte

Zitierte Arten:

Human, Maus, Ratte

Hinweis-IHC: Antigenmaskierung mit TE-Puffer pH 9,0 empfohlen. (*) Wahlweise kann die Antigenmaskierung auch mit Citratpuffer pH 6,0 erfolgen.

Positivkontrollen:

WB : A431-Zellen, A375-Zellen, HeLa-Zellen, MCF-7-Zellen, Rattenhautgewebe, U-251-Zellen

IHC : humanes Ösophaguskarzinomgewebe, humanes Hautgewebe, humanes Lungenkarzinomgewebe, humanes Mammakarzinomgewebe

IF : A431-Zellen, HeLa-Zellen

Hintergrundinformationen

Keratins are a large family of proteins that form the intermediate filament cytoskeleton of epithelial cells, which are classified into two major sequence types. Type I keratins are a group of acidic intermediate filament proteins, including K9-K23, and the hair keratins Ha1-Ha8. Type II keratins are the basic or neutral counterparts to the acidic type I keratins, including K1-K8, and the hair keratins, Hb1-Hb6. Keratin 6 is a type II keratin. It is used as marker for epidermal hyperproliferation and differentiation. There are three keratin 6 isoforms: keratin 6A, 6B and 6C. They share more than 99% identical DNA sequence.

Bemerkenswerte Veröffentlichungen

Verfasser	Pubmed ID	Journal	Anwendung
Bing Sun	27684953	PLoS One	WB
Lihua Gao	32168425	J Cell Mol Med	WB,IHC,IF
Jian Xiao	32162441	Clin Respir J	WB

Lagerung

Lagerungsbedingungen:

Bei -20°C lagern. Nach dem Versand ein Jahr lang stabil

Lagerungspuffer:

PBS mit 0.02% Natriumazid und 50% Glycerin pH 7.3.

Aliquotieren ist nicht notwendig bei -20°C Lagerung

*** 20ul-Größen enthalten 0.1% BSA

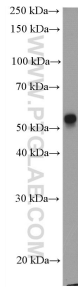
For technical support and original validation data for this product please contact:

T: 1 (888) 4PTGLAB (1-888-478-4522) (toll free in USA), or 1(312) 455-8498 (outside USA)

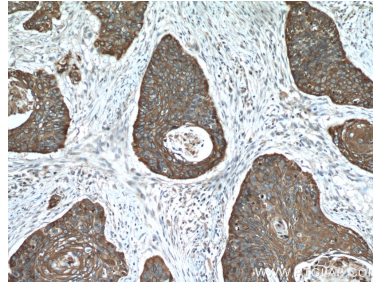
E: proteintech@ptglab.com
W: ptglab.com

This product is exclusively available under Proteintech Group brand and is not available to purchase from any other manufacturer.

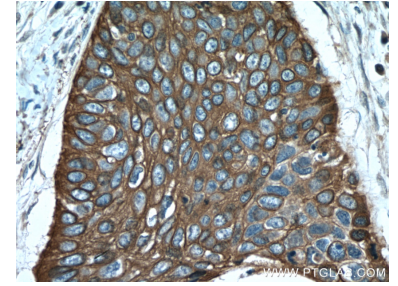
Ausgewählte Validierungsdaten



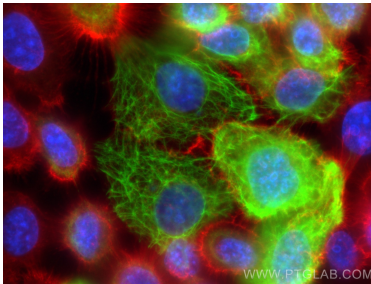
A431 cells were subjected to SDS PAGE followed by western blot with 10590-1-AP (Cytokeratin 6A antibody) at dilution of 1:50000 incubated at room temperature for 1.5 hours.



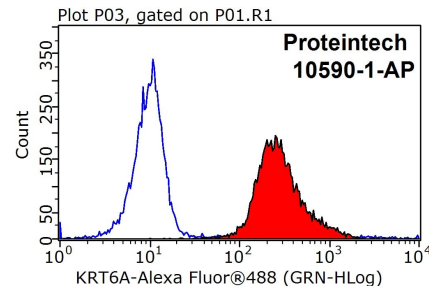
Immunohistochemical analysis of paraffin-embedded human oesophagus cancer tissue slide using 10590-1-AP (Cytokeratin 6A antibody) at dilution of 1:400 (under 10x lens. Heat mediated antigen retrieval with Tris-EDTA buffer (pH 9.0).



Immunohistochemical analysis of paraffin-embedded human oesophagus cancer tissue slide using 10590-1-AP (Cytokeratin 6A antibody) at dilution of 1:400 (under 40x lens. Heat mediated antigen retrieval with Tris-EDTA buffer (pH 9.0).



Immunofluorescent analysis of (-20°C Methanol) fixed A431 cells using Cytokeratin 6A antibody (10590-1-AP) at dilution of 1:400 and CoraLite@488-Conjugated AffiniPure Goat Anti-Rabbit IgG(H+L), CoraLite@594 Beta Actin antibody (CL594-66009, Clone: 2D4H5, red).



1X10⁶ HeLa cells were stained with 0.2ug Cytokeratin 6A antibody (10590-1-AP, red) and control antibody (blue). Fixed with 90% MeOH blocked with 3% BSA (30 min). Alexa Fluor 488-conjugated AffiniPure Goat Anti-Rabbit IgG(H+L) with dilution 1:1000.