

## Allgemeine Informationen

<b>Katalog-Nr.:</b> 10622-1-AP	<b>GenBank-Zugangsnummer:</b> BC002995	<b>Reinigungsmethode:</b> Antigen-Affinitätsreinigung
<b>Größe:</b> 150ul, Konzentration: 650 µg/ml von Nanodrop und 367 µg/ml durch die Bradford-Methode mit BSA als Standard;	<b>GeneID (NCBI):</b> 2810	<b>Empfohlene Verdünnungen:</b> WB 1:5000-1:50000 IHC 1:250-1:1000
<b>Wirt:</b> Kaninchen	<b>Vollständiger Name:</b> stratifin	
<b>Isotyp:</b> IgG	<b>Berechnete Masse:</b> 28 kDa	
<b>Immunogen Katalognummer:</b> AG0973	<b>Beobachtete Masse:</b> 28-30 kDa	

## Anwendungen

<b>Geprüfte Anwendungen:</b> FC, IHC, WB, ELISA	<b>Positivkontrollen:</b>
<b>Getestete Reaktivität:</b> Human, Maus, Ratte	<b>WB:</b> A431-Zellen, A549-Zellen, HeLa-Zellen, U2OS-Zellen
<b>Hinweis-IHC:</b> Antigenmaskierung mit <b>TE-Puffer pH 9,0 empfohlen. (*) Wahlweise kann die Antigenmaskierung auch mit Citratpuffer pH 6,0 erfolgen.</b>	<b>IHC:</b> Mauhautgewebe, humanes Magenkrebsgewebe

## Hintergrundinformationen

14-3-3 Sigma is a member 14-3-3 family of highly conserved proteins participating in diverse cellular processes including cell cycle progression. It is exclusively present in various epithelial cells, and alternatively named as human epithelial marker (HEM), or stratifin. Alteration of its expression has been linked to cancer.

## Lagerung

**Lagerungsbedingungen:**  
Bei -20°C lagern. Nach dem Versand ein Jahr lang stabil

**Lagerungspuffer:**  
PBS mit 0.02% Natriumazid und 50% Glycerin pH 7.3.

Aliquotieren ist nicht notwendig bei -20°C Lagerung

\*\*\* 20ul-Größen enthalten 0.1% BSA

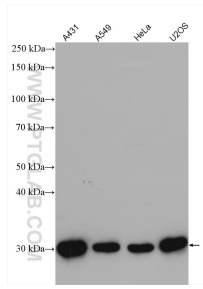
For technical support and original validation data for this product please contact:

T: 1 (888) 4PTGLAB (1-888-478-4522) (toll free  
in USA), or 1(312) 455-8498 (outside USA)

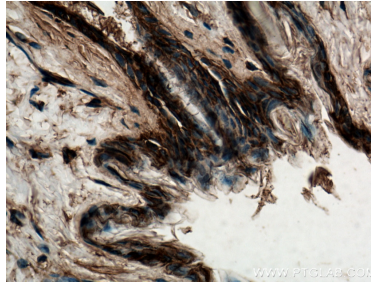
E: proteintech@ptglab.com  
W: ptglab.com

This product is exclusively available under Proteintech Group brand and is not available to purchase from any other manufacturer.

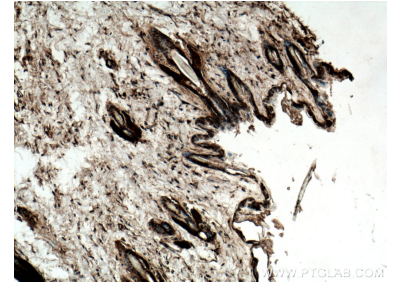
## Ausgewählte Validierungsdaten



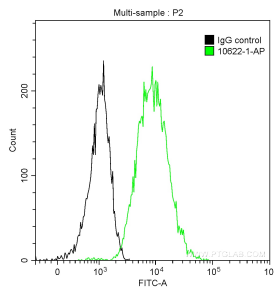
Various lysates were subjected to SDS PAGE followed by western blot with 10622-1-AP (14-3-3 sigma antibody) at dilution of 1:10000 incubated at room temperature for 1.5 hours.



Immunohistochemical analysis of paraffin-embedded mouse skin tissue slide using 10622-1-AP (14-3-3 sigma antibody) at dilution of 1:500 (under 40x lens).



Immunohistochemical analysis of paraffin-embedded mouse skin tissue slide using 10622-1-AP (14-3-3 sigma antibody) at dilution of 1:500 (under 10x lens).



$1 \times 10^6$  A431 cells were intracellularly stained with 0.2  $\mu$ g Anti-Human 14-3-3 Sigma (10622-1-AP) and CoraLite<sup>®</sup>488-Conjugated AffiniPure Goat Anti-Rabbit IgG(H+L) at dilution 1:1000 (green), and 0.2  $\mu$ g Control Antibody. Cells were fixed with 90% MeOH.