

## Allgemeine Informationen

Katalog-Nr.:  
10655-1-AP

Größe:  
150ul , Konzentration: 800 µg/ml von  
Nanodrop und 333 µg/ml durch die  
Bradford-Methode mit BSA als  
Standard;

Wirt:  
Kaninchen

Isotyp:  
IgG

Immunogen Katalognummer:  
AG1019

GenBank-Zugangsnummer:  
BC007924

GeneID (NCBI):  
2288

Vollständiger Name:  
FK506 binding protein 4, 59kDa

Berechnete Masse:  
59 kDa

Beobachtete Masse:  
56-59 kDa

Reinigungsmethode:

Antigen-Affinitätsreinigung

Empfohlene Verdünnungen:

WB 1:1000-1:8000  
IP 0.5-4.0 ug für IP und 1:500-1:2000  
für WB  
IHC 1:20-1:200  
IF 1:10-1:100

## Anwendungen

Geprüfte Anwendungen:

FC, IF, IHC, IP, WB, ELISA

In Publikationen genannte Anwendungen:

IHC, IP, WB

Getestete Reaktivität:

Human, Maus

Zitierte Arten:

Huhn, Human, Maus

**Hinweis-IHC: Antigendemaskierung mit TE-Puffer pH 9,0 empfohlen. (\*) Wahlweise kann die Antigendemaskierung auch mit Citratpuffer pH 6,0 erfolgen.**

Positivkontrollen:

WB : HeLa-Zellen, Jurkat-Zellen, MCF-7-Zellen, NIH/3T3-Zellen, PC-3-Zellen

IP : HeLa-Zellen,

IHC : humanes Prostatakarzinomgewebe,

IF : MCF-7-Zellen,

## Hintergrundinformationen

FKBP52 (FK506 binding protein 4) is a member of the immunophilin protein family that comprises intracellular protein effectors of immunosuppressive drugs, and it is known as a steroid receptor-associated protein. As a novel regulator of microtubule dynamics, FKBP52 is associated with the motor protein dynein and with the cytoskeleton during mitosis. FKBP52 is highly expressed in CNS regions susceptible to Alzheimer's, and plays a role in modulating toxicity of Abeta peptides. The protein can associate with the Tau function, and may help to decipher and modulate the events involved in Tau-induced neurodegeneration. In addition, FKBP52 is likely to play a role in growth and development of the male genitalia.

## Bemerkenswerte Veröffentlichungen

Verfasser	Pubmed ID	Journal	Anwendung
Alain Mangé	31660083	Theranostics	WB
Chun-Yan Wu	27594807	Proteome Sci	WB
Keisuke Maeda	34057812	Mol Oncol	WB IP

## Lagerung

Lagerungsbedingungen:

Bei -20°C lagern. Nach dem Versand ein Jahr lang stabil

Lagerungspuffer:

PBS mit 0.02% Natriumazid und 50% Glycerin pH 7.3.

Aliquotieren ist nicht notwendig bei -20°C Lagerung

\*\*\* 20ul-Größen enthalten 0.1% BSA

For technical support and original validation data for this product please contact:

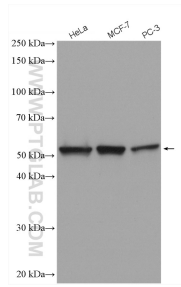
T: 1 (888) 4PTGLAB (1-888-478-4522) (toll free in USA), or 1(312) 455-8498 (outside USA)

E: [proteintech@ptglab.com](mailto:proteintech@ptglab.com)

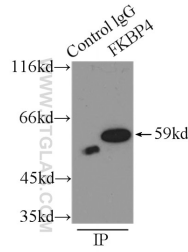
W: [ptglab.com](http://ptglab.com)

This product is exclusively available under Proteintech Group brand and is not available to purchase from any other manufacturer.

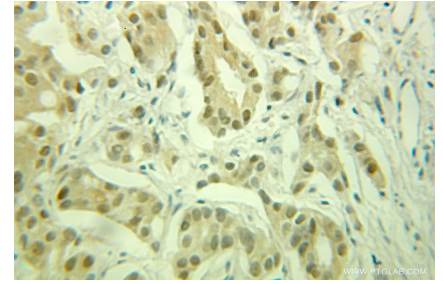
## Ausgewählte Validierungsdaten



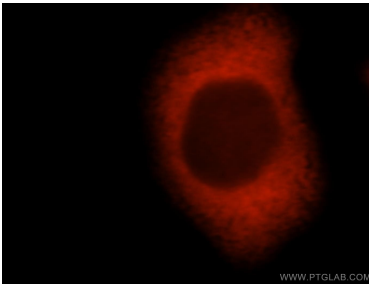
Various lysates were subjected to SDS PAGE followed by western blot with 10655-1-AP (FKBP52 antibody) at dilution of 1:4000 incubated at room temperature for 1.5 hours.



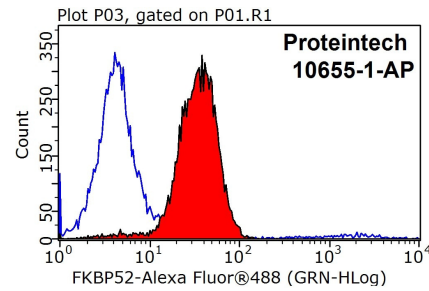
IP Result of anti-FKBP52 (IP:10655-1-AP, 3ug; Detection:10655-1-AP 1:1000) with HeLa cells lysate 3000ug.



Immunohistochemical analysis of paraffin-embedded human prostate cancer using 10655-1-AP (FKBP52 antibody) at dilution of 1:100 (under 25x lens).



Immunofluorescent analysis of MCF-7 cells, using FKBP4 antibody 10655-1-AP at 1:25 dilution and Rhodamine-labeled goat anti-rabbit IgG (red).



1x10<sup>6</sup> MCF-7 cells were stained with 0.2ug FKBP52 antibody (10655-1-AP, red) and control antibody (blue). Fixed with 90% MeOH blocked with 3% BSA (30 min). Alexa Fluor 488-conjugated AffiniPure Goat Anti-Rabbit IgG(H+L) with dilution 1:1000.