

Nur für Forschungszwecke

RCC1 Polyklonaler Antikörper

Katalog-Nr.:10697-1-AP

Vorgestelltes Produkt



Allgemeine Informationen

Katalog-Nr.:
10697-1-AP

Größe:

150ul, Konzentration: 400 µg/ml von
Nanodrop und 333 µg/ml durch die
Bradford-Methode mit BSA als
Standard;

Wirt:

Kaninchen

Isotyp:

IgG

Immunogen Katalognummer:

AG1042

GenBank-Zugangsnummer:

BC007300

GeneID (NCBI):

751867

Vollständiger Name:

SNHG3-RCC1 readthrough transcript

Berechnete Masse:

45 kDa, 48 kDa

Beobachtete Masse:

68 kDa

Reinigungsmethode:

Antigen-Affinitätsreinigung

Empfohlene Verdünnungen:

WB 1:1000-1:6000

IP 0.5-4.0 µg für IP und 1:500-1:1000

für WB

IHC 1:50-1:500

Anwendungen

Geprüfte Anwendungen:

IHC, IP, WB, ELISA

Getestete Reaktivität:

Human, Maus, Ratte

**Hinweis-IHC: Antigendemaskierung mit TE-
Puffer pH 9,0 empfohlen. (*) Wahlweise
kann die Antigendemaskierung auch mit
Citratpuffer pH 6,0 erfolgen.**

Positivkontrollen:

WB: A431-Zellen, HEK-293T-Zellen, HEK-293-Zellen,
HeLa-Zellen, Jurkat-Zellen, Maushodengewebe, Raji-
Zellen, SGC-7901-Zellen

IP: HeLa-Zellen,

IHC: humanes Ovarialkarzinomgewebe, humanes
Urothelkarzinomgewebe

Hintergrundinformationen

CHC1, also named as RCC1, SNHG3-RCC1, promotes the exchange of ran-bound gdp by gtp. It is involved in the regulation of onset of chromosome condensation in the S-phase. Phosphorylation of RCC1 on serines located in or near its nuclear localization signal activates RCC1 to generate RanGTP on mitotic chromosomes, which is required for spindle assembly and chromosome segregation. This antibody is a rabbit polyclonal antibody raised against residues near the C terminus of human RCC1. The geneID has updated as 1104 recently.

Lagerung

Lagerungsbedingungen:

Bei -20°C lagern. Nach dem Versand ein Jahr lang stabil

Lagerungspuffer:

PBS mit 0.02% Natriumazid und 50% Glycerin pH 7.3.

Aliquotieren ist nicht notwendig bei -20°C Lagerung

*** 20ul-Größen enthalten 0.1% BSA

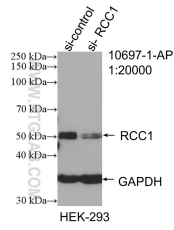
For technical support and original validation data for this product please contact:

T: 1 (888) 4PTGLAB (1-888-478-4522) (toll free
in USA), or 1(312) 455-8498 (outside USA)

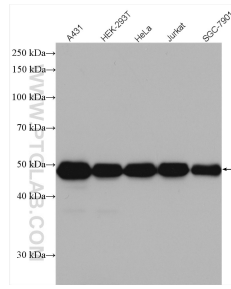
E: proteintech@ptglab.com
W: ptglab.com

This product is exclusively available under Proteintech
Group brand and is not available to purchase from any
other manufacturer.

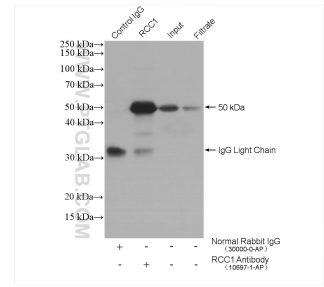
Ausgewählte Validierungsdaten



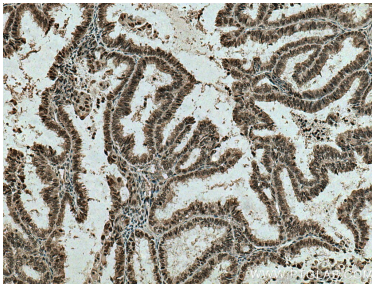
WB result of RCC1 antibody (10697-1-AP; 1:20000; incubated at room temperature for 1.5 hours) with sh-Control and sh-RCC1 transfected HEK-293 cells.



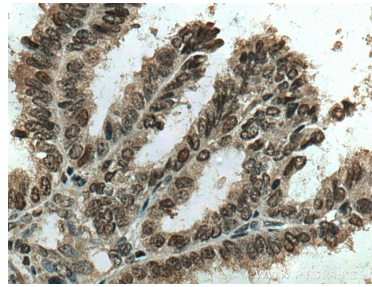
Various lysates were subjected to SDS PAGE followed by western blot with 10697-1-AP (RCC1 antibody) at dilution of 1:3000 incubated at room temperature for 1.5 hours.



IP result of anti-RCC1 (IP:10697-1-AP, 4ug; Detection:10697-1-AP 1:500) with HeLa cells lysate 1600 ug.



Immunohistochemical analysis of paraffin-embedded human ovary tumor tissue slide using 10697-1-AP (RCC1 antibody) at dilution of 1:200 (under 10x lens). Heat mediated antigen retrieval with Tris-EDTA buffer (pH 9.0).



Immunohistochemical analysis of paraffin-embedded human ovary tumor tissue slide using 10697-1-AP (RCC1 antibody) at dilution of 1:200 (under 40x lens). Heat mediated antigen retrieval with Tris-EDTA buffer (pH 9.0).