

Nur für Forschungszwecke

# MGP Polyklonaler Antikörper

Katalog-Nr.:10734-1-AP

Vorgestelltes Produkt

32 Publikationen



## Allgemeine Informationen

<b>Katalog-Nr.:</b> 10734-1-AP	<b>GenBank-Zugangsnummer:</b> BC005272	<b>Reinigungsmethode:</b> Antigen-Affinitätsreinigung
<b>Größe:</b> 150ul, Konzentration: 500 µg/ml von Nanodrop;	<b>GeneID (NCBI):</b> 4256	<b>Empfohlene Verdünnungen:</b> IHC 1:50-1:500 IF 1:50-1:500
<b>Wirt:</b> Kaninchen	<b>Vollständiger Name:</b> matrix Gla protein	
<b>Isotyp:</b> IgG	<b>Berechnete Masse:</b> 103 aa, 13 kDa	
<b>Immunogen Katalognummer:</b> AG1091		

## Anwendungen

<b>Geprüfte Anwendungen:</b> IF, IHC, ELISA	<b>Positivkontrollen:</b> IHC : humanes Kolonkarzinomgewebe, humanes Dünndarmgewebe, humanes Lymphomgewebe, humanes Mammaryhyperplasie-Gewebe, humanes Mammakarzinomgewebe IF : Mausnierengewebe,
<b>In Publikationen genannte Anwendungen:</b> IF, IHC, WB	
<b>Getestete Reaktivität:</b> Human, Maus	
<b>Zitierte Arten:</b> Human, Maus, Ratte	
<b>Hinweis-IHC: Antigenmaskierung mit TE-Puffer pH 9,0 empfohlen. (*) Wahlweise kann die Antigenmaskierung auch mit Citratpuffer pH 6,0 erfolgen.</b>	

## Hintergrundinformationen

Matrix Gla protein (MGP), a vitamin K-dependent protein, is recognized as a calcification inhibitor in vascular tissue. Defects in MGP are the cause of Keutel syndrome (KS), which is an autosomal recessive disorder characterized by abnormal cartilage calcification, peripheral pulmonary stenosis neural hearing loss and midfacial hypoplasia.

## Bemerkenswerte Veröffentlichungen

Verfasser	Pubmed ID	Journal	Anwendung
Karolina Sterzyńska	30257426	Int J Mol Sci	WB,IHC,IF
Xin He	32979364	Exp Cell Res	IHC,WB
Yimeng Cui	36185284	Front Oncol	WB

## Lagerung

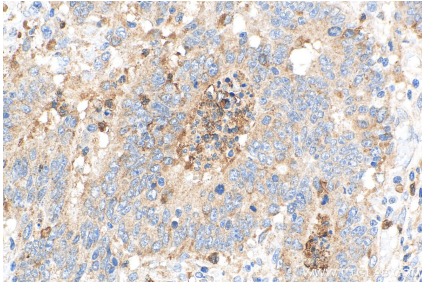
**Lagerungsbedingungen:**  
Bei -20°C lagern. Nach dem Versand ein Jahr lang stabil  
**Lagerungspuffer:**  
PBS mit 0.02% Natriumazid und 50% Glycerin pH 7.3.  
Aliquotieren ist nicht notwendig bei -20°C Lagerung

\*\*\* 20ul-Größen enthalten 0.1% BSA

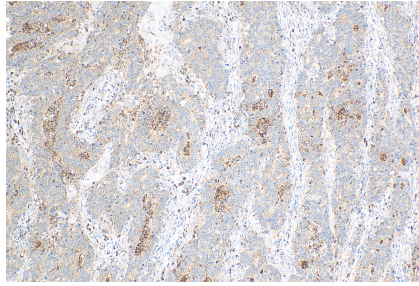
For technical support and original validation data for this product please contact:  
T: 1 (888) 4PTGLAB (1-888-478-4522) (toll free in USA), or 1(312) 455-8498 (outside USA)  
E: proteintech@ptglab.com  
W: ptglab.com

This product is exclusively available under Proteintech Group brand and is not available to purchase from any other manufacturer.

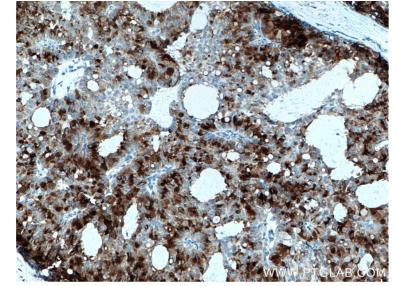
## Ausgewählte Validierungsdaten



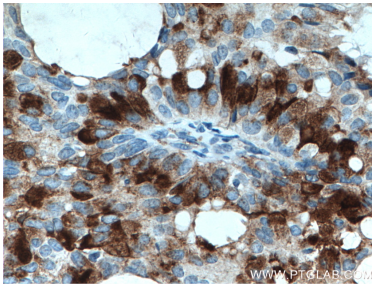
Immunohistochemical analysis of paraffin-embedded human colon cancer tissue slide using 10734-1-AP (MGP antibody) at dilution of 1:200 (under 40x lens). Heat mediated antigen retrieval with Tris-EDTA buffer (pH 9.0).



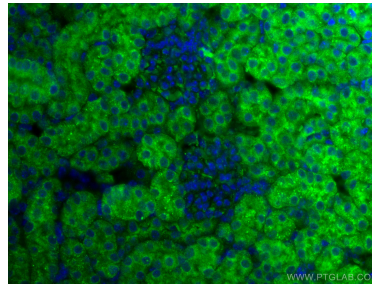
Immunohistochemical analysis of paraffin-embedded human colon cancer tissue slide using 10734-1-AP (MGP antibody) at dilution of 1:200 (under 10x lens). Heat mediated antigen retrieval with Tris-EDTA buffer (pH 9.0).



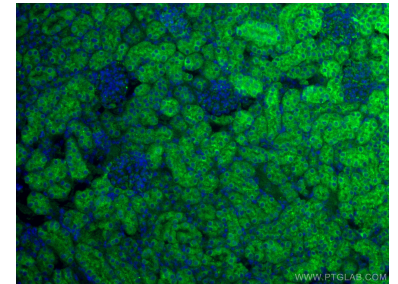
Immunohistochemical analysis of paraffin-embedded human breast hyperplasia tissue slide using 10734-1-AP (MGP antibody) at dilution of 1:400 (under 10x lens). Heat mediated antigen retrieval with Tris-EDTA buffer (pH 9.0).



Immunohistochemical analysis of paraffin-embedded human breast hyperplasia tissue slide using 10734-1-AP (MGP antibody) at dilution of 1:400 (under 40x lens). Heat mediated antigen retrieval with Tris-EDTA buffer (pH 9.0).



Immunofluorescent analysis of (4% PFA) fixed mouse kidney tissue using MGP antibody (10734-1-AP) at dilution of 1:200 and CoraLite@488-Conjugated AffiniPure Goat Anti-Rabbit IgG(H+L).



Immunofluorescent analysis of (4% PFA) fixed mouse kidney tissue using MGP antibody (10734-1-AP) at dilution of 1:200 and CoraLite@488-Conjugated AffiniPure Goat Anti-Rabbit IgG(H+L).