

Allgemeine Informationen

Katalog-Nr.: 10762-1-AP	GenBank-Zugangsnummer: BC014563	Reinigungsmethode: Antigen-Affinitätsreinigung
Größe: 150ul , Konzentration: 400 µg/ml von Nanodrop;	GeneID (NCBI): 983	Empfohlene Verdünnungen: WB 1:1000-1:4000 IHC 1:250-1:1000 IF 1:50-1:500
Wirt: Kaninchen	Vollständiger Name: cell division cycle 2, G1 to S and G2 to M	
Isotyp: IgG	Berechnete Masse: 25 kDa	
Immunogen Katalognummer: AG1183	Beobachtete Masse: 34 kDa	

Anwendungen

Geprüfte Anwendungen:

FC, IF, IHC, WB, ELISA

In Publikationen genannte Anwendungen:

IHC, WB

Getestete Reaktivität:

Human

Zitierte Arten:

Hausschwein, Human, Maus

Hinweis-IHC: Antigenemaskierung mit TE-Puffer pH 9,0 empfohlen. (*) Wahlweise kann die Antigenemaskierung auch mit Citratpuffer pH 6,0 erfolgen.

Positivkontrollen:

WB: C2C12 cell, C2C12-Zellen, HeLa-Zellen, Jurkat-Zellen

IHC: humanes Prostatakarzinomgewebe, humanes Mammakarzinomgewebe

IF: HeLa-Zellen,

Hintergrundinformationen

CDK1, also named as CDC2, belongs to the protein kinase superfamily, CMGC Ser/Thr protein kinase family and CDC2/CDKX subfamily. CDK1 plays a key role in the control of the eukaryotic cell cycle. It is required in higher cells for entry into S-phase and mitosis. CDK1 is a catalytic subunit of the highly conserved protein kinase complex known as M-phase promoting factor (MPF), which is essential for G1/S and G2/M phase transitions of eukaryotic cell cycle. It is a component of the kinase complex that phosphorylates the repetitive C-terminus of RNA polymerase II. Mitotic cyclins stably associate with CDK1 and function as regulatory subunits. CDK1 has 2 isoforms produced by alternative splicing with the molecular mass of 34 kDa and 27 kDa. This antibody may have cross reaction with CDK2.

Bemerkenswerte Veröffentlichungen

Verfasser	Pubmed ID	Journal	Anwendung
Zilu Zhang	34570444	Cancer Biol Med	WB
Qin Zhang	36083512	Mol Cell Biochem	WB
Huan Ma	33573708	Oncol Res	WB

Lagerung

Lagerungsbedingungen:

Bei -20°C lagern. Nach dem Versand ein Jahr lang stabil

Lagerungspuffer:

PBS mit 0.02% Natriumazid und 50% Glycerin pH 7.3.

Aliquotieren ist nicht notwendig bei -20°C Lagerung

***** 20ul-Größen enthalten 0.1% BSA**

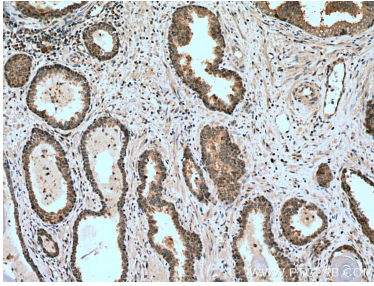
For technical support and original validation data for this product please contact:

T: 1 (888) 4PTGLAB (1-888-478-4522) (toll free in USA), or 1(312) 455-8498 (outside USA)

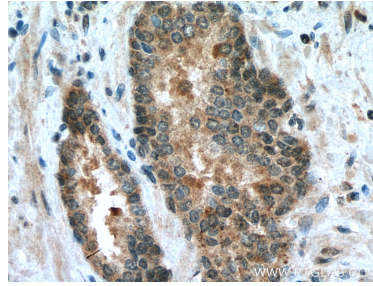
E: proteintech@ptglab.com
 W: ptglab.com

This product is exclusively available under Proteintech Group brand and is not available to purchase from any other manufacturer.

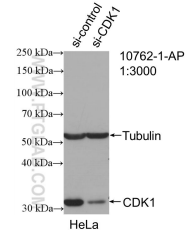
Ausgewählte Validierungsdaten



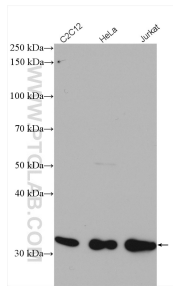
Immunohistochemical analysis of paraffin-embedded human prostate cancer tissue slide using 10762-1-AP (CDK1 antibody) at dilution of 1:500 (under 10x lens). Heat mediated antigen retrieval with Tris-EDTA buffer (pH 9.0).



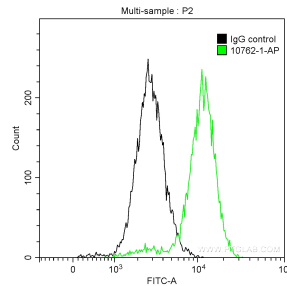
Immunohistochemical analysis of paraffin-embedded human prostate cancer tissue slide using 10762-1-AP (CDK1 antibody) at dilution of 1:500 (under 40x lens). Heat mediated antigen retrieval with Tris-EDTA buffer (pH 9.0).



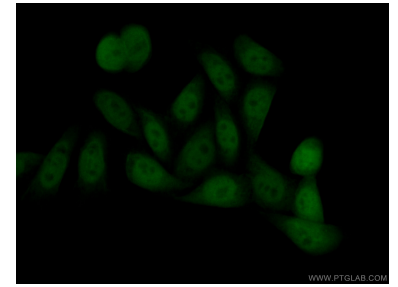
WB result of CDK1 antibody (10762-1-AP; 1:3000; incubated at room temperature for 1.5 hours) with sh-Control and sh-CDK1 transfected HeLa cells.



Various lysates were subjected to SDS PAGE followed by western blot with 10762-1-AP (CDK1 antibody) at dilution of 1:4000 incubated at room temperature for 1.5 hours.



1×10^6 HeLa cells were intracellularly stained with 0.2 ug Anti-Human CDK1 (10762-1-AP) and CoraLite@488-Conjugated AffiniPure Goat Anti-Rabbit IgG(H+L) at dilution 1:1000 (green), and 0.2 ug Control Antibody. Cells were fixed with 90% MeOH.



Immunofluorescent analysis of (4% PFA) fixed HeLa cells using 10762-1-AP (CDK1 antibody) at dilution of 1:50 and CoraLite488-Conjugated AffiniPure Goat Anti-Rabbit IgG(H+L).