

## Allgemeine Informationen

**Katalog-Nr.:**  
10814-1-AP

**Größe:**  
150ul , Konzentration: 900 µg/ml von  
Nanodrop und 433 µg/ml durch die  
Bradford-Methode mit BSA als  
Standard;

**Wirt:**  
Kaninchen

**Isotyp:**  
IgG

**Immunogen Katalognummer:**  
AG1161

**GenBank-Zugangsnummer:**  
BC007082

**GeneID (NCBI):**  
6605

**Vollständiger Name:**  
SWI/SNF related, matrix associated,  
actin dependent regulator of  
chromatin, subfamily e, member 1

**Berechnete Masse:**  
47 kDa

**Beobachtete Masse:**  
50-55 kDa

**Reinigungsmethode:**

Antigen-Affinitätsreinigung

**Empfohlene Verdünnungen:**

WB 1:500-1:2000  
IP 0.5-4.0 ug für IP und 1:500-1:1000  
für WB  
IHC 1:50-1:500

## Anwendungen

**Geprüfte Anwendungen:**

IHC, IP, WB, ELISA

**Getestete Reaktivität:**

Human, Maus, Ratte

**Hinweis-IHC: Antigenmaskierung mit TE-Puffer pH 9,0 empfohlen. (\*) Wahlweise kann die Antigenmaskierung auch mit Citratpuffer pH 6,0 erfolgen.**

**Positivkontrollen:**

**WB:** Jurkat-Zellen, HEK-293-Zellen, HeLa-Zellen, MCF-7-Zellen

**IP:** HEK-293-Zellen,

**IHC:** humanes Prostatakarzinomgewebe,

## Hintergrundinformationen

Via antagonizing chromatin-mediated transcriptional repression, the SWI/SNF complex in *S. cerevisiae* and *Drosophila* is thought to facilitate transcriptional activation of specific genes. The BRG1/brm-associated factors, or SMARCE1, complex in mammals is functionally related to SWI/SNF and consists of 9 to 12 subunits, some of which are homologous to SWI/SNF subunits. It contains a DNA-binding HMG domain and performs multiple biological functions, including DNA-, protein- and chromatin-binding, transcription coactivating activity, chromatin modification, DNA-dependent negative regulation of transcription, regulation of transcription of the RNA polymerase II promoter. In addition, SMARCE1, as an ER (estrogen receptor) subtype-selective modulator, regulates ER mediated transcription in a ligand-dependent manner and also directly binds to AR (androgen receptor) to alter its activity. The calculated molecular weight of SMARCE1 is 47 kDa, but modified SMARCE1 is about 55 kDa.

## Lagerung

**Lagerungsbedingungen:**

Bei -20°C lagern. Nach dem Versand ein Jahr lang stabil

**Lagerungspuffer:**

PBS mit 0.02% Natriumazid und 50% Glycerin pH 7.3.

Aliquotieren ist nicht notwendig bei -20°C Lagerung

\*\*\* 20ul-Größen enthalten 0.1% BSA

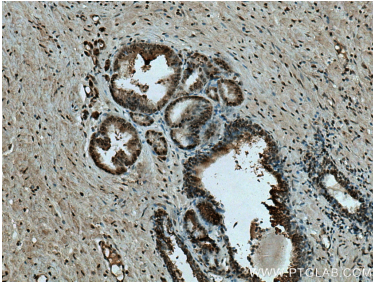
For technical support and original validation data for this product please contact:

T: 1 (888) 4PTGLAB (1-888-478-4522) (toll free  
in USA), or 1(312) 455-8498 (outside USA)

E: proteintech@ptglab.com  
W: ptglab.com

This product is exclusively available under Proteintech Group brand and is not available to purchase from any other manufacturer.

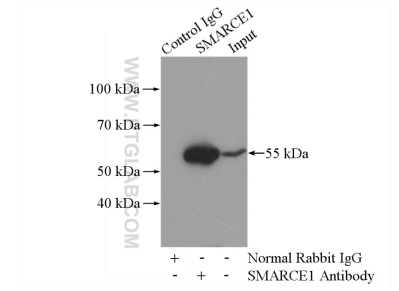
## Ausgewählte Validierungsdaten



Immunohistochemical analysis of paraffin-embedded human prostate cancer tissue slide using 10814-1-AP (SMARCE1 antibody) at dilution of 1:200 (under 10x lens). Heat mediated antigen retrieval with Tris-EDTA buffer (pH 9.0).



Jurkat cells were subjected to SDS PAGE followed by western blot with 10814-1-AP (SMARCE1 antibody) at dilution of 1:1000 incubated at room temperature for 1.5 hours.



IP Result of anti-SMARCE1 (IP:10814-1-AP, 4ug; Detection:10814-1-AP 1:800) with HEK-293 cells lysate 880ug.

Control IgG	SMARCE1	Input
+	-	-
-	+	-

Normal Rabbit IgG  
SMARCE1 Antibody