

Nur für Forschungszwecke

IVD Polyklonaler Antikörper

Katalog-Nr.:10822-1-AP

7 Publikationen



Allgemeine Informationen

Katalog-Nr.:
10822-1-AP

Größe:
150ul, Konzentration: 500 µg/ml von
Nanodrop und 360 µg/ml durch die
Bradford-Methode mit BSA als
Standard;

Wirt:
Kaninchen

Isotyp:
IgG

Immunogen Katalognummer:
AG1252

GenBank-Zugangsnummer:
BC017202

GeneID (NCBI):
3712

Vollständiger Name:
isovaleryl Coenzyme A
dehydrogenase

Berechnete Masse:
46 kDa

Beobachtete Masse:
41-46 kDa

Reinigungsmethode:

Antigen-Affinitätsreinigung

Empfohlene Verdünnungen:

WB 1:2000-1:12000

IP 0.5-4.0 µg für IP und 1:200-1:1000
für WB

IHC 1:300-1:1200

IF 1:50-1:500

Anwendungen

Geprüfte Anwendungen:

IF, IHC, IP, WB, ELISA

In Publikationen genannte Anwendungen:

IHC, WB

Getestete Reaktivität:

Human, Maus, Ratte

Zitierte Arten:

Arabidopsis, Maus, Ratte

Hinweis-IHC: Antigendemaskierung mit TE-Puffer pH 9,0 empfohlen. (*) Wahlweise kann die Antigendemaskierung auch mit Citratpuffer pH 6,0 erfolgen.

Positivkontrollen:

WB: MCF-7-Zellen, HepG2-Zellen, humanes

Hirngewebe, Mauslebergewebe, Rattenlebergewebe

IP: MCF-7-Zellen,

IHC: humanes Leberkarzinomgewebe,

IF: MCF-7-Zellen,

Hintergrundinformationen

IVD (Isovaleryl CoA dehydrogenase, mitochondrial) is a member of the acylCoA dehydrogenase family and is involved in the catabolism of leucine. In size, IVD precursor and mature proteins produced by class I mutants are indistinguishable from their normal counterparts. Class II, III, and IV mutants make IVD precursor proteins 42 kD in size rather than the normal 45 kD (PMID:2063866). It has 2 isoforms produced by alternative splicing.

Bemerkenswerte Veröffentlichungen

Verfasser	Pubmed ID	Journal	Anwendung
Min-Zhi Peng	35727412	Cell Mol Life Sci	WB
Danielle S Brito	35031834	Plant Cell Rep	WB
Signe Horn	26649805	Mol Endocrinol	WB

Lagerung

Lagerungsbedingungen:

Bei -20°C lagern. Nach dem Versand ein Jahr lang stabil

Lagerungspuffer:

PBS mit 0.02% Natriumazid und 50% Glycerin pH 7.3.

Aliquotieren ist nicht notwendig bei -20°C Lagerung

*** 20ul-Größen enthalten 0.1% BSA

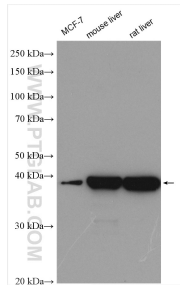
For technical support and original validation data for this product please contact:

T: 1 (888) 4PTGLAB (1-888-478-4522) (toll free
in USA), or 1(312) 455-8498 (outside USA)

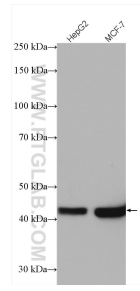
E: proteintech@ptglab.com
W: ptglab.com

This product is exclusively available under Proteintech Group brand and is not available to purchase from any other manufacturer.

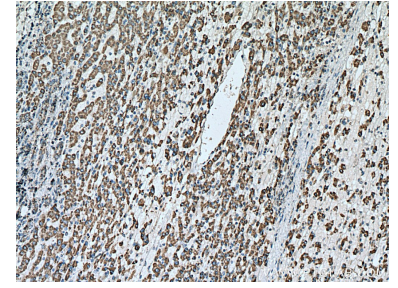
Ausgewählte Validierungsdaten



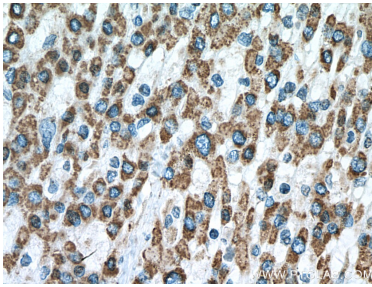
Various lysates were subjected to SDS PAGE followed by western blot with 10822-1-AP (IVD antibody) at dilution of 1:6000 incubated at room temperature for 1.5 hours.



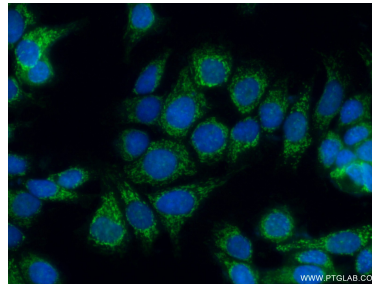
Various lysates were subjected to SDS PAGE followed by western blot with 10822-1-AP (IVD antibody) at dilution of 1:2000 incubated at room temperature for 1.5 hours.



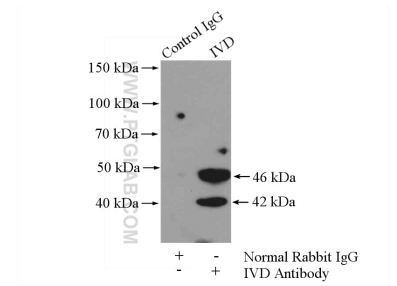
Immunohistochemical analysis of paraffin-embedded human liver cancer tissue slide using 10822-1-AP (IVD antibody) at dilution of 1:600 (under 10x lens). Heat mediated antigen retrieval with Tris-EDTA buffer (pH 9.0).



Immunohistochemical analysis of paraffin-embedded human liver cancer tissue slide using 10822-1-AP (IVD antibody) at dilution of 1:600 (under 40x lens). Heat mediated antigen retrieval with Tris-EDTA buffer (pH 9.0).



Immunofluorescent analysis of (4% PFA) fixed MCF-7 cells using 10822-1-AP (IVD antibody) at dilution of 1:50 and Alexa Fluor 488-conjugated AffiniPure Goat Anti-Rabbit IgG(H+L).



IP Result of anti-IVD (IP:10822-1-AP, 4ug; Detection:10822-1-AP 1:300) with MCF-7 cells lysate 800ug.