

Nur für Forschungszwecke

# TPT1 Polyklonaler Antikörper

Katalog-Nr.:10824-1-AP

Vorgestelltes Produkt

6 Publikationen



## Allgemeine Informationen

<b>Katalog-Nr.:</b> 10824-1-AP	<b>GenBank-Zugangsnummer:</b> BC003352	<b>Reinigungsmethode:</b> Antigen-Affinitätsreinigung
<b>Größe:</b> 150ul , Konzentration: 600 µg/ml von Nanodrop;	<b>GeneID (NCBI):</b> 7178	<b>Empfohlene Verdünnungen:</b> WB 1:1000-1:8000
<b>Wirt:</b> Kaninchen	<b>Vollständiger Name:</b> tumor protein, translationally- controlled 1	IP 0.5-4.0 ug für IP und 1:500-1:1000 für WB
<b>Isotyp:</b> IgG	<b>Berechnete Masse:</b> 22 kDa	IHC 1:20-1:200 IF 1:200-1:800
<b>Immunogen Katalognummer:</b> AG1268	<b>Beobachtete Masse:</b> 22-25 kDa	

## Anwendungen

### Geprüfte Anwendungen:

IF, IHC, IP, WB, ELISA

### In Publikationen genannte Anwendungen:

IF, IHC, IP, WB

### Getestete Reaktivität:

Human, Maus, Ratte

### Zitierte Arten:

Human, Maus, Ratte

**Hinweis-IHC: Antigenmaskierung mit TE-Puffer pH 9,0 empfohlen. (\*) Wahlweise kann die Antigenmaskierung auch mit Citratpuffer pH 6,0 erfolgen.**

### Positivkontrollen:

WB : A431-Zellen, Maus-Plazenta-Gewebe, MCF-7-Zellen

IP : humanes Plazenta-Gewebe,

IHC : humanes Kolonkarzinomgewebe,

IF : HeLa-Zellen,

## Hintergrundinformationen

The translationally controlled tumor protein (TPT1, also known as TCTP) is a highly conserved, abundantly expressed protein associated with cell growth and apoptosis regulation. It is overexpressed in most tumor cells and its down-regulation decreases the viability of those cells. This antibody detected 22-25 kDa TPT1 in lysates. An additional band around 50 kDa can also be observed occasionally, possibly representing the dimer form of TPT1.

## Bemerkenswerte Veröffentlichungen

Verfasser	Pubmed ID	Journal	Anwendung
Nicolas Fischer	33259807	Chem Biol Interact	WB
Dongrong Zhu	33667688	Pharmacol Res	WB
Staflin Karin K	19558675	BMC Cancer	WB,IHC

## Lagerung

### Lagerungsbedingungen:

Bei -20°C lagern. Nach dem Versand ein Jahr lang stabil

### Lagerungspuffer:

PBS mit 0.02% Natriumazid und 50% Glycerin pH 7.3.

Aliquotieren ist nicht notwendig bei -20°C Lagerung

\*\*\* 20ul-Größen enthalten 0.1% BSA

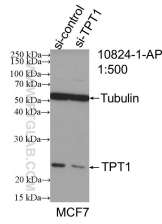
For technical support and original validation data for this product please contact:

T: 1 (888) 4PTGLAB (1-888-478-4522) (toll free in USA), or 1(312) 455-8498 (outside USA)

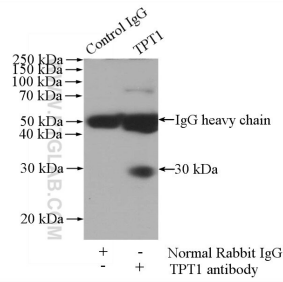
E: proteintech@ptglab.com  
W: ptglab.com

This product is exclusively available under Proteintech Group brand and is not available to purchase from any other manufacturer.

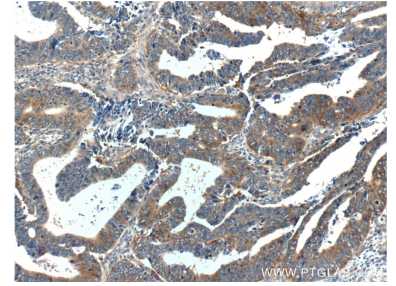
## Ausgewählte Validierungsdaten



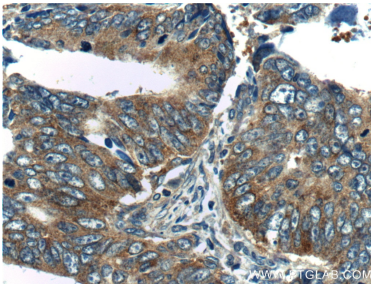
WB result of TPT1 antibody (10824-1-AP; 1:500; incubated at room temperature for 1.5 hours) with sh-Control and sh-TPT1 transfected MCF-7 cells.



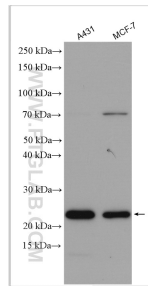
IP Result of anti-TPT1 (IP:10824-1-AP, 4 $\mu$ g; Detection:10824-1-AP 1:500) with human placenta tissue lysate 1520 $\mu$ g.



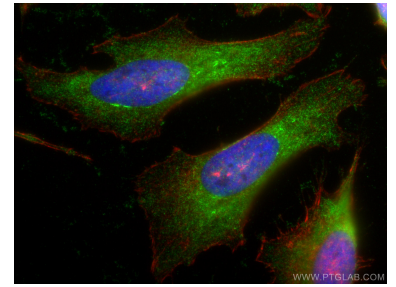
Immunohistochemical analysis of paraffin-embedded human colon cancer tissue slide using 10824-1-AP (TPT1 Antibody) at dilution of 1:200 (under 10 $\times$  lens).



Immunohistochemical analysis of paraffin-embedded human colon cancer tissue slide using 10824-1-AP (TPT1 Antibody) at dilution of 1:200 (under 40 $\times$  lens).



Various lysates were subjected to SDS PAGE followed by western blot with 10824-1-AP (TPT1 antibody) at dilution of 1:4000 incubated at room temperature for 1.5 hours.



Immunofluorescent analysis of (-20 $^{\circ}$ C Ethanol) fixed HeLa cells using TPT1 antibody (10824-1-AP) at dilution of 1:400 and Coralite $^{\circ}$ 488-Conjugated AffiniPure Goat Anti-Rabbit IgG(H+L), CL594-Phalloidin (red).