

Nur für Forschungszwecke

Alpha Synuclein Polyklonaler Antikörper



Katalog-Nr.:10842-1-AP

51 Publikationen

Allgemeine Informationen

Katalog-Nr.: 10842-1-AP	GenBank-Zugangsnummer: BC013293	Reinigungsmethode: Antigen-Affinitätsreinigung
Größe: 150ul , Konzentration: 590 µg/ml von Nanodrop;	GeneID (NCBI): 6622	Empfohlene Verdünnungen: WB 1:500-1:1000 IHC 1:50-1:500 IF 1:10-1:100
Wirt: Kaninchen	Vollständiger Name: synuclein, alpha (non A4 component of amyloid precursor)	
Isotyp: IgG	Berechnete Masse: 14 kDa	
Immunogen Katalognummer: AG1285	Beobachtete Masse: 15-19 kDa	

Anwendungen

Geprüfte Anwendungen:

IF, IHC, WB, ELISA

In Publikationen genannte Anwendungen:

CoIP, ELISA, IF, IHC, IP, WB

Getestete Reaktivität:

Human, Maus, Ratte

Zitierte Arten:

Hefe, Human, Maus, Ratte, Zebrafink

Hinweis-IHC: Antigenmaskierung mit TE-Puffer pH 9,0 empfohlen. (*) Wahlweise kann die Antigenmaskierung auch mit Citratpuffer pH 6,0 erfolgen.

Positivkontrollen:

WB: Maushirngewebe, humanes Hirngewebe, Rattenhirngewebe

IHC: Maushirngewebe, humanes Hautgewebe, humanes Lungengewebe, humanes Nierengewebe, humanes Plazenta-Gewebe

IF: SH-SY5Y-Zellen, Maushirngewebe

Hintergrundinformationen

Alpha Synuclein (α -syn) is a 14-19 kDa phosphoprotein that is primarily localize to the presynaptic terminals of mature neurons, where it is involved in synaptic function and plasticity. A-syn has drawn intense interest ever since the late 1990s, when the first α -synuclein missense mutation was identified as a cause of familial Parkinson's disease (PD). Aggregated and hyper-phosphorylated forms of α -syn protein are the pathological hallmark of Lewy body disease, which includes Parkinson's disease (PD), diffuse Lewy body disease (DLBD), and Lewy body variant of Alzheimer's disease (LBV). This antibody can recognize all the isoforms of α -syn.

Bemerkenswerte Veröffentlichungen

Verfasser	Pubmed ID	Journal	Anwendung
Damilare D Akintade	33003464	Cells	WB
Kuo-Hsuan Chang	34551822	Stem Cell Res Ther	WB
Wen-Li Dong	34531546	Acta Pharmacol Sin	WB

Lagerung

Lagerungsbedingungen:

Bei -20°C lagern. Nach dem Versand ein Jahr lang stabil

Lagerungspuffer:

PBS mit 0.02% Natriumazid und 50% Glycerin pH 7.3.

Aliquotieren ist nicht notwendig bei -20°C Lagerung

*** 20ul-Größen enthalten 0.1% BSA

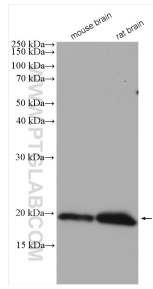
For technical support and original validation data for this product please contact:

T: 1 (888) 4PTGLAB (1-888-478-4522) (toll free in USA), or 1(312) 455-8498 (outside USA)

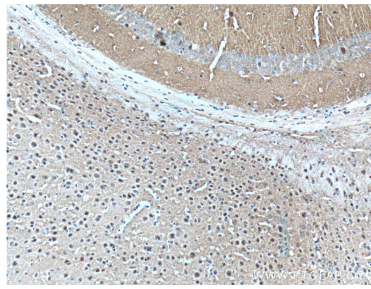
E: proteintech@ptglab.com
W: ptglab.com

This product is exclusively available under Proteintech Group brand and is not available to purchase from any other manufacturer.

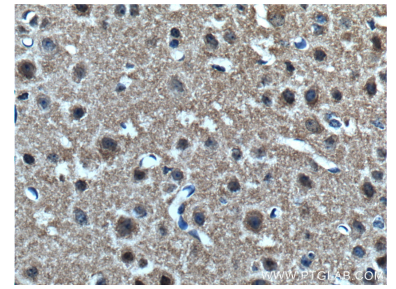
Ausgewählte Validierungsdaten



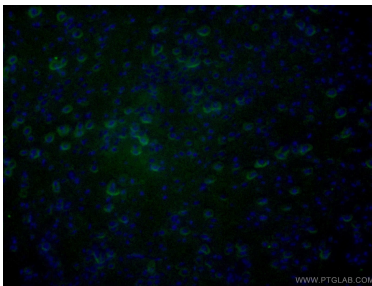
Various lysates were subjected to SDS PAGE followed by western blot with 10842-1-AP (alpha-synuclein antibody) at dilution of 1:800 incubated at room temperature for 1.5 hours.



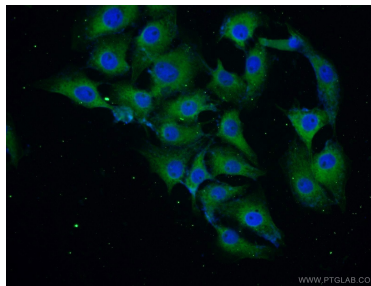
Immunohistochemical analysis of paraffin-embedded mouse brain tissue slide using 10842-1-AP (alpha-synuclein antibody at dilution of 1:200 (under 10x lens). Heat mediated antigen retrieval with Tris-EDTA buffer (pH 9.0).



Immunohistochemical analysis of paraffin-embedded mouse brain tissue slide using 10842-1-AP (alpha-synuclein antibody at dilution of 1:200 (under 40x lens). Heat mediated antigen retrieval with Tris-EDTA buffer (pH 9.0).



Immunofluorescent analysis of (4% PFA) fixed mouse brain tissue using 10842-1-AP (alpha-synuclein antibody) at dilution of 1:50 and Alexa Fluor 488-conjugated AffiniPure Goat Anti-Rabbit IgG(H+L).



Immunofluorescent analysis of SH-SY5Y cells using 10842-1-AP (alpha-synuclein antibody) at dilution of 1:25 and Alexa Fluor 488-conjugated AffiniPure Goat Anti-Rabbit IgG(H+L).