

Nur für Forschungszwecke

# Palladin Polyklonaler Antikörper

Katalog-Nr.:10853-1-AP

Vorgestelltes Produkt

69 Publikationen



## Allgemeine Informationen

Katalog-Nr.:  
10853-1-AP

Größe:  
150ul, Konzentration: 300 µg/ml von  
Nanodrop und 213 µg/ml durch die  
Bradford-Methode mit BSA als  
Standard;

Wirt:  
Kaninchen

Isotyp:  
IgG

Immunogen Katalognummer:  
AG1288

GenBank-Zugangsnummer:  
BC013867

GeneID (NCBI):  
23022

Vollständiger Name:  
palladin, cytoskeletal associated  
protein

Berechnete Masse:  
1383 aa, 151 kDa

Beobachtete Masse:  
95 kDa, 140 kDa

Reinigungsmethode:

Antigen-Affinitätsreinigung

Empfohlene Verdünnungen:

WB 1:1000-1:4000  
IP 0.5-4.0 µg für IP und 1:1000-1:4000  
für WB  
IHC 1:50-1:500  
IF 1:20-1:200

## Anwendungen

Geprüfte Anwendungen:

FC, IF, IHC, IP, WB, ELISA

In Publikationen genannte Anwendungen:

COIP, IF, IHC, IP, WB

Getestete Reaktivität:

Human, Maus

Zitierte Arten:

Human, Maus, Ratte

Positivkontrollen:

WB : HeLa-Zellen, A549-Zellen

IP : HeLa-Zellen, HEK-293-Zellen

IHC : humanes Kolonkarzinomgewebe, humanes  
Kolongewebe, humanes Mammakarzinomgewebe,  
humanes Ovarialkarzinomgewebe

IF : HeLa-Zellen,

**Hinweis-IHC: Antigendemaskierung mit TE-  
Puffer pH 9,0 empfohlen. (\*) Wahlweise  
kann die Antigendemaskierung auch mit  
Citratpuffer pH 6,0 erfolgen.**

## Hintergrundinformationen

Palladin is an actin associated protein serving as a cytoskeleton scaffold, and actin cross linker, localizing at stress fibers, focal adhesions, and other actin based structures. Palladin exists as multiple isoforms through alternative transcription initiation sites and splicing. There are three major isoforms (200, 140, 90-92 kDa) and multiple minor isoforms. Different palladin isoforms are expressed in a tissue-specific pattern during development and in adult organs: the 200 kDa isoform is predominantly expressed in the heart, skeletal muscle, testis and bone; the 140 kDa isoform is widely expressed with the exception of liver, muscle, and skin; the 90-92 kDa isoform is broadly expressed in embryonic tissues and highly expressed in adult smooth muscle tissues (21455759). Recently overexpression of palladin has been linked to the promoted invasive motility in several types of cancers (18978809, 22291919). The 85-90 kDa palladin isoform has been observed predominantly expressed in pancreatic ductal adenocarcinoma (PDA) while a 65 kDa isoform is expressed in normal pancreas and non-PDA tumors (20436683). This antibody, generated against the fragment 999-1383aa of palladin, recognizes most isoforms of this protein, except isoform 6.

## Bemerkenswerte Veröffentlichungen

Verfasser	Pubmed ID	Journal	Anwendung
Sheng Hu	36038029	Neurosci Lett	WB
Avital Gilam	27641360	Nat Commun	WB,IHC
Xiang Zhang	28924223	Sci Rep	WB,IF,COIP

## Lagerung

Lagerungsbedingungen:

Bei -20°C lagern. Nach dem Versand ein Jahr lang stabil

Lagerungspuffer:

PBS mit 0.02% Natriumazid und 50% Glycerin pH 7.3.

Aliquotieren ist nicht notwendig bei -20°C Lagerung

\*\*\* 20ul-Größen enthalten 0.1% BSA

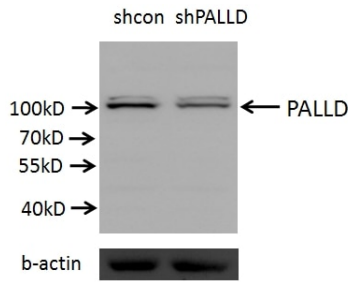
For technical support and original validation data for this product please contact:

T: 1 (888) 4PTGLAB (1-888-478-4522) (toll free  
in USA), or 1(312) 455-8498 (outside USA)

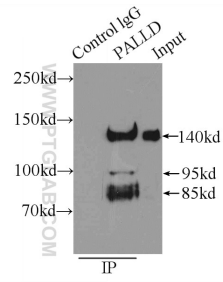
E: proteintech@ptglab.com  
W: ptglab.com

This product is exclusively available under Proteintech Group brand and is not available to purchase from any other manufacturer.

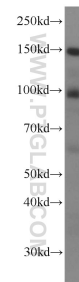
## Ausgewählte Validierungsdaten



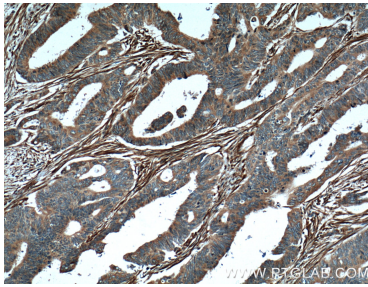
A549 cells (shcontrol and shRNA of PALLD) were subjected to SDS PAGE followed by western blot with 10853-1-AP (PALLD antibody) at dilution of 1:2000.



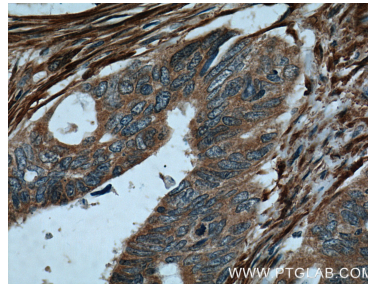
IP Result of anti-Palladin (IP:10853-1-AP, 4ug; Detection:10853-1-AP 1:2000) with HeLa cells lysate 1800ug.



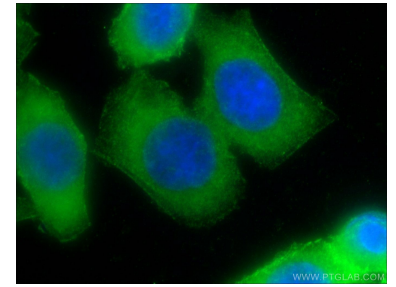
HeLa cells were subjected to SDS PAGE followed by western blot with 10853-1-AP (Palladin antibody) at dilution of 1:2000 incubated at room temperature for 1.5 hours.



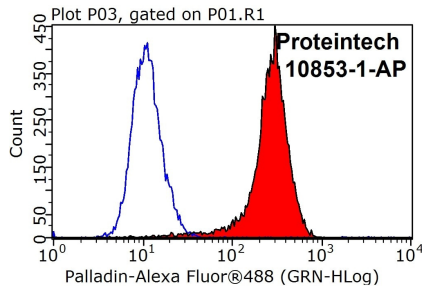
Immunohistochemical analysis of paraffin-embedded human colon cancer tissue slide using 10853-1-AP (PALLD, palladin Antibody) at dilution of 1:200 (under 10x lens). Heat mediated antigen retrieval with Tris-EDTA buffer (pH 9.0).



Immunohistochemical analysis of paraffin-embedded human colon cancer tissue slide using 10853-1-AP (PALLD, palladin Antibody) at dilution of 1:200 (under 40x lens). Heat mediated antigen retrieval with Tris-EDTA buffer (pH 9.0).



Immunofluorescent analysis of HeLa cells using 10853-1-AP (Palladin antibody) at dilution of 1:50 and Alexa Fluor 488-conjugated AffiniPure Goat Anti-Rabbit IgG(H+L).



$1 \times 10^6$  HeLa cells were stained with 0.2ug PALLD, palladin antibody (10853-1-AP, red) and control antibody (blue). Cells were fixed with 4% PFA and permeabilized with 0.1% Triton X-100. Alexa Fluor 488-conjugated AffiniPure Goat Anti-Rabbit IgG(H+L) with dilution 1:1000.