

Nur für Forschungszwecke

JP45/JSRP1 Polyklonaler Antikörper

Katalog-Nr.:10854-1-AP



Allgemeine Informationen

Katalog-Nr.: 10854-1-AP	GenBank-Zugangsnummer: BC021201	Reinigungsmethode: Antigen-Affinitätsreinigung
Größe: 150ul, Konzentration: 600 µg/ml von Nanodrop und 253 µg/ml durch die Bradford-Methode mit BSA als Standard;	GeneID (NCBI): 126306	Empfohlene Verdünnungen: WB 1:500-1:1000 IHC 1:50-1:500 IF 1:50-1:500
Wirt: Kaninchen	Vollständiger Name: junctional sarcoplasmic reticulum protein 1	
Isotyp: IgG	Berechnete Masse: 36 kDa, 45 kDa	
Immunogen Katalognummer: AG1300	Beobachtete Masse: 30 kDa	

Anwendungen

Geprüfte Anwendungen: IF, IHC, WB, ELISA	Positivkontrollen: WB : humanes Skelettmuskelgewebe, IHC : humanes Pankreaskarzinomgewebe, IF : HepG2-Zellen,
Getestete Reaktivität: Human	
Hinweis-IHC: Antigendemaskierung mit TE-Puffer pH 9,0 empfohlen. (*) Wahlweise kann die Antigendemaskierung auch mit Citratpuffer pH 6,0 erfolgen.	

Hintergrundinformationen

JSRP1 (Junctional sarcoplasmic reticulum protein 1), also known as JP-45, is an integral protein of the junctional face membrane of the skeletal muscle sarcoplasmic reticulum (SR), and interacts with calsequestrin and the skeletal-muscle dihydropyridine receptor Cav1. JP-45 is an important protein for functional expression of voltage-dependent calcium channels. Involvement of JP-45 in the molecular mechanism underlying skeletal muscle excitation-contraction coupling has been reported. Although the predicated molecular weight of JP-45 is 36 kDa, it appears a 45-kDa band in western blotting in most cases.

Lagerung

Lagerungsbedingungen:
Bei -20°C lagern. Nach dem Versand ein Jahr lang stabil
Lagerungspuffer:
PBS mit 0.02% Natriumazid und 50% Glycerin pH 7.3.
Aliquotieren ist nicht notwendig bei -20°C Lagerung

***** 20ul-Größen enthalten 0.1% BSA**

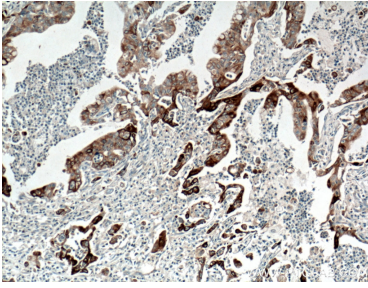
For technical support and original validation data for this product please contact:

T: 1 (888) 4PTGLAB (1-888-478-4522) (toll free in USA), or 1(312) 455-8498 (outside USA)

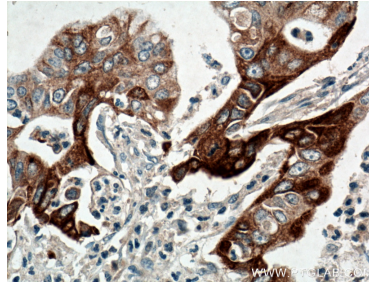
E: proteintech@ptglab.com
W: ptglab.com

This product is exclusively available under Proteintech Group brand and is not available to purchase from any other manufacturer.

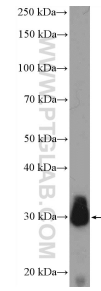
Ausgewählte Validierungsdaten



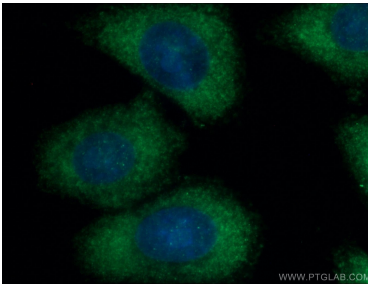
Immunohistochemical analysis of paraffin-embedded human pancreas cancer tissue slide using 10854-1-AP (JP45/JSRP1 antibody) at dilution of 1:200 (under 10x lens. Heat mediated antigen retrieval with Tris-EDTA buffer (pH 9.0).



Immunohistochemical analysis of paraffin-embedded human pancreas cancer tissue slide using 10854-1-AP (JP45/JSRP1 antibody) at dilution of 1:200 (under 40x lens. Heat mediated antigen retrieval with Tris-EDTA buffer (pH 9.0).



human skeletal muscle tissue were subjected to SDS PAGE followed by western blot with 10854-1-AP (JP45/JSRP1 antibody) at dilution of 1:600 incubated at room temperature for 1.5 hours.



Immunofluorescent analysis of (-20°C Ethanol) fixed HepG2 cells using 10854-1-AP (JP45/JSRP1 antibody) at dilution of 1:100 and Alexa Fluor 488-conjugated AffiniPure Goat Anti-Rabbit IgG(H+L).