

Allgemeine Informationen

Katalog-Nr.:
10861-1-AP

Größe:
150ul, Konzentration: 300 µg/ml von Nanodrop und 180 µg/ml durch die Bradford-Methode mit BSA als Standard;

Wirt:
Kaninchen

Isotyp:
IgG

Immunogen Katalognummer:
AG1309

GenBank-Zugangsnummer:
BC011612

GeneID (NCBI):
4204

Vollständiger Name:
methyl CpG binding protein 2 (Rett syndrome)

Berechnete Masse:
52 kDa, 53 kDa

Beobachtete Masse:
75 kDa

Reinigungsmethode:

Antigen-Affinitätsreinigung

Empfohlene Verdünnungen:

WB 1:500-1:1000
IP 0.5-4.0 µg für IP und 1:500-1:1000 für WB
IHC 1:50-1:500
IF 1:20-1:200

Anwendungen

Geprüfte Anwendungen:

FC, IF, IHC, IP, WB, ELISA

In Publikationen genannte Anwendungen:

ChIP, IF, IHC, WB

Getestete Reaktivität:

Human, Maus, Ratte

Zitierte Arten:

Human, Maus, Ratte

Hinweis-IHC: Antigendemaskierung mit TE-Puffer pH 9,0 empfohlen. (*) Wahlweise kann die Antigendemaskierung auch mit Citratpuffer pH 6,0 erfolgen.

Positivkontrollen:

WB: MDA-MB-453s-Zellen, humanes Hirngewebe, Maus-Eierstockgewebe, Mausherzgewebe, Maushirngewebe, Mauslungengewebe, MCF-7-Zellen, Rattenlungengewebe, SH-SY5Y-Zellen

IP: MCF-7-Zellen, HEK-293T-Zellen

IHC: humanes Hirngewebe, humanes Gliomgewebe, humanes Mammakarzinomgewebe, Rattenhirngewebe

IF: HepG2-Zellen, Maus-Cerebellum-Gewebe

Hintergrundinformationen

METHYL-CpG-BINDING PROTEIN 2(MECP2), is a chromatin-associated protein that can both activate and repress transcription. Mecp2 in the adult mouse is high in the brain, lung, and spleen, lower in heart and kidney. MECP2 takes part in the control of neuronal activity-dependent gene regulation, and this process may underlie the pathology of Rett syndrome, a severe developmental disorder with autistic phenotypes. As compared to wild-type monkeys, MECP2 transgenic monkeys exhibited a higher frequency of repetitive circular locomotion and increased stress responses, as measured by the threat-related anxiety and defensive test. Chromosomal protein that binds to methylated DNA. It can bind specifically to a single methyl-CpG pair. It is not influenced by sequences flanking the methyl-CpGs. Mediates transcriptional repression through interaction with histone deacetylase and the corepressor SIN3A. Two isoforms of MECP2 exist due to alternative splicing events. This antibody reacts with the MECP2 and phosphorylated MECP2 proteins. The calculated molecular weight of MECP2 is a 52 kDa, but the post-modified MECP2 protein is about 75-80 kDa (PMID: 12160743).

Bemerkenswerte Veröffentlichungen

Verfasser	Pubmed ID	Journal	Anwendung
Gamze Ayaz	34475492	Sci Rep	ChIP
Wang Ying Y	21925646	Brain Res	WB,IHC
Jordan M Buck	32138755	Epigenetics Chromatin	WB

Lagerung

Lagerungsbedingungen:

Bei -20°C lagern. Nach dem Versand ein Jahr lang stabil

Lagerungspuffer:

PBS mit 0.02% Natriumazid und 50% Glycerin pH 7.3.

Aliquotieren ist nicht notwendig bei -20°C Lagerung

***** 20ul-Größen enthalten 0.1% BSA**

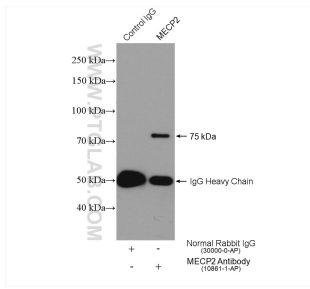
For technical support and original validation data for this product please contact:

T: 1 (888) 4PTGLAB (1-888-478-4522) (toll free in USA), or 1(312) 455-8498 (outside USA)

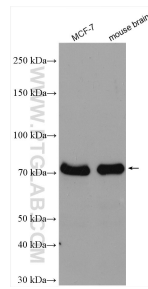
E: proteintech@ptglab.com
W: ptglab.com

This product is exclusively available under Proteintech Group brand and is not available to purchase from any other manufacturer.

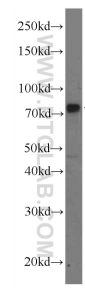
Ausgewählte Validierungsdaten



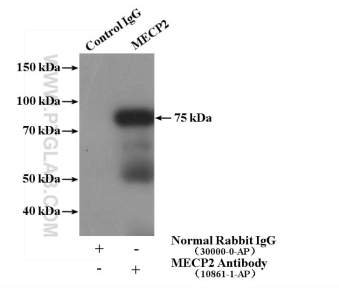
IP result of anti-MECP2 (IP:10861-1-AP, 4 μ g; Detection:10861-1-AP 1:500) with HEK-293T cells lysate 1640 μ g.



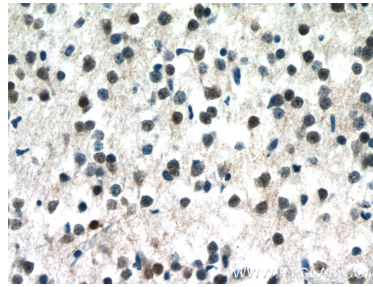
Various lysates were subjected to SDS PAGE followed by western blot with 10861-1-AP (MECP2 antibody) at dilution of 1:2000 incubated at room temperature for 1.5 hours.



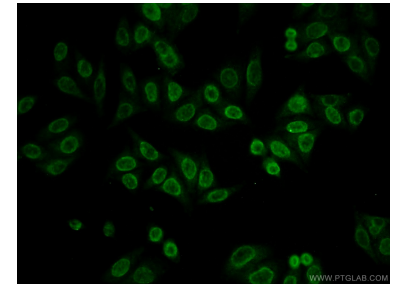
MDA-MB-453s cells were subjected to SDS PAGE followed by western blot with 10861-1-AP (MECP2 Antibody) at dilution of 1:600 incubated at room temperature for 1.5 hours.



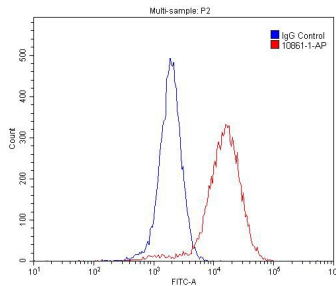
IP Result of anti-MECP2 (IP:10861-1-AP, 4 μ g; Detection:10861-1-AP 1:500) with MCF-7 cells lysate 1280 μ g.



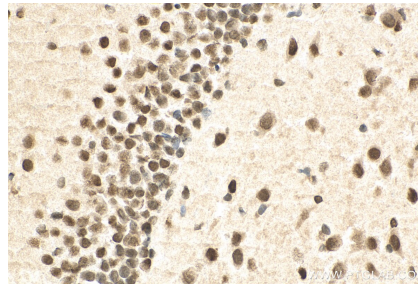
Immunohistochemical analysis of paraffin-embedded human brain tissue slide using 10861-1-AP (MECP2 Antibody) at dilution of 1:50 (under 40x lens).



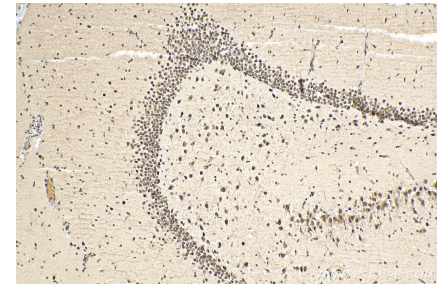
Immunofluorescent analysis of HepG2 cells using 10861-1-AP (MECP2 antibody) at dilution of 1:50 and Alexa Fluor 488-conjugated AffiniPure Goat Anti-Rabbit IgG(H+L).



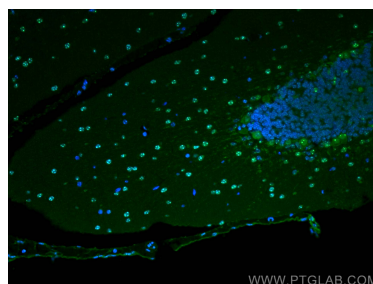
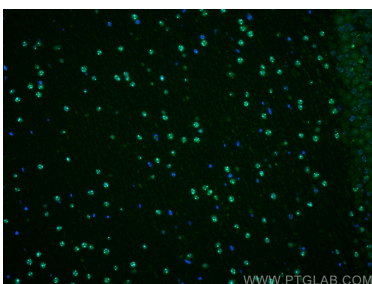
1X10⁶ NIH/3T3 cells were stained with 0.2 μ g MECP2 antibody (10861-1-AP, red) and control antibody (blue). Alexa Fluor 488-conjugated AffiniPure Goat Anti-Rabbit IgG(H+L) with dilution 1:1500. Cells were fixed with 4% PFA and permeabilized with 0.1% Triton X-100.



Immunohistochemical analysis of paraffin-embedded rat brain tissue slide using 10861-1-AP (MECP2 antibody) at dilution of 1:200 (under 40x lens). Heat mediated antigen retrieval with Tris-EDTA buffer (pH 9.0).



Immunohistochemical analysis of paraffin-embedded rat brain tissue slide using 10861-1-AP (MECP2 antibody) at dilution of 1:200 (under 10x lens). Heat mediated antigen retrieval with Tris-EDTA buffer (pH 9.0).



Immunofluorescent analysis of (4% PFA) fixed mouse cerebellum tissue using MECP2 antibody (10861-1-AP) at dilution of 1:200 and CoraLite®488-Conjugated AffiniPure Goat Anti-Rabbit IgG(H+L).

Immunofluorescent analysis of (4% PFA) fixed mouse cerebellum tissue using MECP2 antibody (10861-1-AP) at dilution of 1:200 and CoraLite®488-Conjugated AffiniPure Goat Anti-Rabbit IgG(H+L).