

Nur für Forschungszwecke

Myosin Light Chain 2/MLC-2V Polyklonaler Antikörper



Katalog-Nr.:10906-1-AP

177 Publikationen

Allgemeine Informationen

Katalog-Nr.: 10906-1-AP	GenBank-Zugangsnummer: BC015821	Reinigungsmethode: Antigen-Affinitätsreinigung
Größe: 150ul , Konzentration: 500 µg/ml von Nanodrop;	GeneID (NCBI): 4633	Empfohlene Verdünnungen: WB 1:2000-1:16000 IP 0.5-4.0 ug für IP und 1:500-1:1000 für WB
Wirt: Kaninchen	Vollständiger Name: myosin, light chain 2, regulatory, cardiac, slow	IHC 1:300-1:1200 IF 1:50-1:500
Isotyp: IgG	Berechnete Masse: 19 kDa	
Immunogen Katalognummer: AG1356	Beobachtete Masse: 19 kDa	

Anwendungen

Geprüfte Anwendungen:

IF, IHC, IP, WB, ELISA

In Publikationen genannte Anwendungen:

FC, IF, IHC, WB

Getestete Reaktivität:

Human, Maus, Ratte, Zebrafisch

Zitierte Arten:

Affe, Hausschwein, Human, Maus, Ratte, Zebrafisch

Hinweis-IHC: Antigenmaskierung mit TE-Puffer pH 9,0 empfohlen. (*) Wahlweise kann die Antigenmaskierung auch mit Citratpuffer pH 6,0 erfolgen.

Positivkontrollen:

WB : Mausherzgewebe, Rattenherzgewebe

IP : Mausherzgewebe,

IHC : Mausherzgewebe, humanes Herzgewebe, Rattenherzgewebe

IF : Mausherzgewebe,

Hintergrundinformationen

MYL2, also named as MLC-2v and MLC-2, is ventricular/cardiac muscle isoform. Defects in MYL2 are the cause of cardiomyopathy familial hypertrophic type 10 (CMH10). Defects in MYL2 are the cause of cardiomyopathy familial hypertrophic with mid-left ventricular chamber type 2 (MVC2). MYL2 has been widely used as a marker of mature ventricular cardiomyocytes. There are four genes of myosin light chain 2 (MLC2): MYL2 (MLC2v), MYL5, MYL7 (MLC2a) and MYL9 (MLC2c). While usually myosin light chain 2 is referred to MYL2.

Bemerkenswerte Veröffentlichungen

Verfasser	Pubmed ID	Journal	Anwendung
Arvin H Soepriatna	34777603	Cell Mol Bioeng	IF
Bin Li	28962583	Stem Cell Res Ther	IF
A Gaignerie	30254308	Sci Rep	IF

Lagerung

Lagerungsbedingungen:

Bei -20°C lagern. Nach dem Versand ein Jahr lang stabil

Lagerungspuffer:

PBS mit 0.02% Natriumazid und 50% Glycerin pH 7.3.

Aliquotieren ist nicht notwendig bei -20°C Lagerung

*** 20ul-Größen enthalten 0.1% BSA

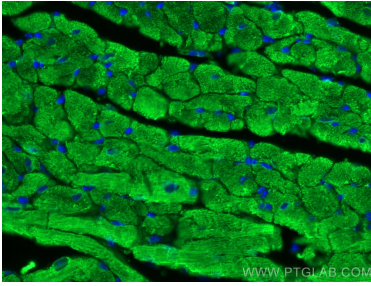
For technical support and original validation data for this product please contact:

T: 1 (888) 4PTGLAB (1-888-478-4522) (toll free in USA), or 1(312) 455-8498 (outside USA)

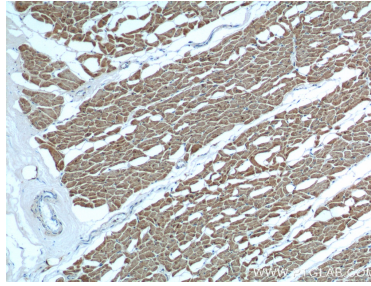
E: proteintech@ptglab.com
W: ptglab.com

This product is exclusively available under Proteintech Group brand and is not available to purchase from any other manufacturer.

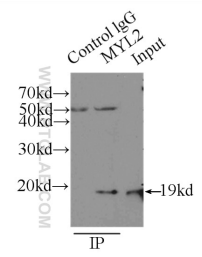
Ausgewählte Validierungsdaten



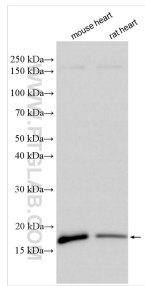
Immunofluorescent analysis of (4% PFA) fixed mouse heart tissue using Myosin Light Chain 2/MLC-2V antibody (10906-1-AP) at dilution of 1:200 and CoraLite®488-Conjugated AffiniPure Goat Anti-Rabbit IgG(H+L).



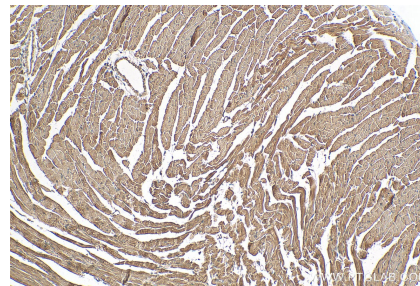
Immunohistochemical analysis of paraffin-embedded human heart tissue slide using 10906-1-AP (Myosin Light Chain 2 antibody at dilution of 1:200 (under 10x lens).



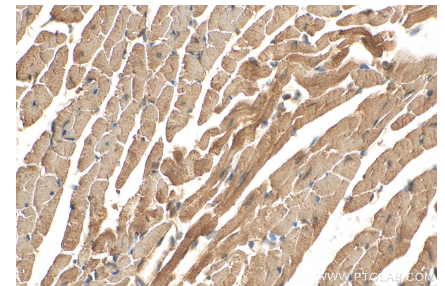
IP Result of anti-Myosin Light Chain 2 (IP:10906-1-AP, 3µg; Detection:10906-1-AP 1:500) with mouse heart tissue lysate 6000µg.



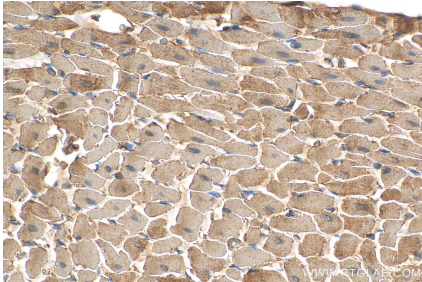
Various lysates were subjected to SDS PAGE followed by western blot with 10906-1-AP (Myosin Light Chain 2/MLC-2V antibody) at dilution of 1:8000 incubated at room temperature for 1.5 hours.



Immunohistochemical analysis of paraffin-embedded mouse heart tissue slide using 10906-1-AP (Myosin Light Chain 2/MLC-2V antibody) at dilution of 1:600 (under 10x lens). Heat mediated antigen retrieval with Tris-EDTA buffer (pH 9.0).



Immunohistochemical analysis of paraffin-embedded mouse heart tissue slide using 10906-1-AP (Myosin Light Chain 2/MLC-2V antibody) at dilution of 1:600 (under 40x lens). Heat mediated antigen retrieval with Tris-EDTA buffer (pH 9.0).



Immunohistochemical analysis of paraffin-embedded rat heart tissue slide using 10906-1-AP (Myosin Light Chain 2/MLC-2V antibody) at dilution of 1:400 (under 40x lens). Heat mediated antigen retrieval with Tris-EDTA buffer (pH 9.0).