

Nur für Forschungszwecke

# SULT1A1 Polyklonaler Antikörper

Katalog-Nr.: 10911-2-AP

7 Publikationen



## Allgemeine Informationen

Katalog-Nr.:  
10911-2-AP

Größe:  
150ul, Konzentration: 400 µg/ml von  
Nanodrop und 270 µg/ml durch die  
Bradford-Methode mit BSA als  
Standard;

Wirt:  
Kaninchen

Isotyp:  
IgG

Immunogen Katalognummer:  
AG1344

GenBank-Zugangsnummer:  
BC000923

GeneID (NCBI):  
6817

Vollständiger Name:  
sulfotransferase family, cytosolic, 1A,  
phenol-preferring, member 1

Berechnete Masse:  
34 kDa

Beobachtete Masse:  
34 kDa

Reinigungsmethode:

Antigen-Affinitätsreinigung

Empfohlene Verdünnungen:

WB 1:500-1:2000  
IP 0.5-4.0 µg für IP und 1:500-1:2000  
für WB  
IF 1:20-1:200

## Anwendungen

Geprüfte Anwendungen:

FC, IF, IP, WB, ELISA

In Publikationen genannte Anwendungen:

IHC, WB

Getestete Reaktivität:

Human, Maus, Ratte

Zitierte Arten:

Human, Maus, Ratte

Positivkontrollen:

WB: Mauslebergewebe, Rattenlebergewebe

IP: Mauslebergewebe,

IF: HepG2-Zellen,

## Hintergrundinformationen

SULT1A1, also named as ST1A1, P-PST 1, ST1A3, Ts-PST, P-PST 1, STP and STP1, belongs to the sulfotransferase 1 family. It catalyzes the sulfate conjugation of catecholamines, phenolic drugs and neurotransmitters. SULT1A1 is also responsible for the sulfation and activation of minoxidil. It mediates the metabolic activation of carcinogenic N-hydroxyarylamines to DNA binding products and could so participate as modulating factor of cancer risk. SULT1A1 is one of two phenol sulfotransferases with thermostable enzyme activity.

## Bemerkenswerte Veröffentlichungen

Verfasser	Pubmed ID	Journal	Anwendung
Shu Xiao-Hong XH	22096581	PLoS One	WB, IHC
Xu Zheng	30116486	Oxid Med Cell Longev	WB
Bin Jia	33391410	J Cancer	IHC, WB

## Lagerung

Lagerungsbedingungen:

Bei -20°C lagern. Nach dem Versand ein Jahr lang stabil

Lagerungspuffer:

PBS mit 0.02% Natriumazid und 50% Glycerin pH 7.3.

Aliquotieren ist nicht notwendig bei -20°C Lagerung

\*\*\* 20ul-Größen enthalten 0.1% BSA

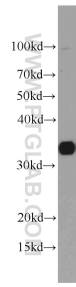
For technical support and original validation data for this product please contact:

T: 1 (888) 4PTGLAB (1-888-478-4522) (toll free  
in USA), or 1(312) 455-8498 (outside USA)

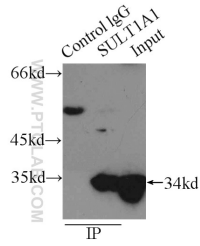
E: proteintech@ptglab.com  
W: ptglab.com

This product is exclusively available under Proteintech Group brand and is not available to purchase from any other manufacturer.

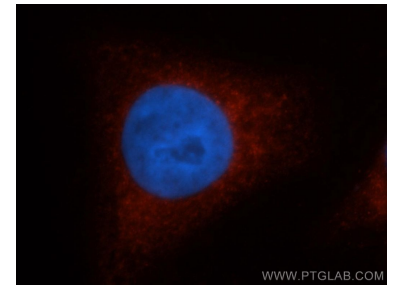
## Ausgewählte Validierungsdaten



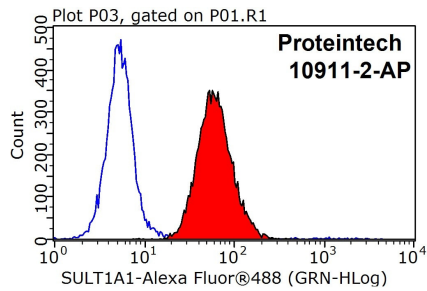
mouse liver tissue were subjected to SDS PAGE followed by western blot with 10911-2-AP (SULT1A1 antibody) at dilution of 1:1000 incubated at room temperature for 1.5 hours.



IP Result of anti-SULT1A1 (IP:10911-2-AP, 3ug; Detection:10911-2-AP 1:1000) with mouse liver tissue lysate 12500ug.



Immunofluorescent analysis of HepG2 cells, using SULT1A1 antibody 10911-2-AP at 1:50 dilution and Rhodamine-labeled goat anti-rabbit IgG (red). Blue pseudocolor = DAPI (fluorescent DNA dye).



1X10<sup>6</sup> HepG2 cells were stained with 0.2ug SULT1A1 antibody (10911-2-AP, red) and control antibody (blue). Fixed with 90% MeOH blocked with 3% BSA (30 min). Alexa Fluor 488-conjugated AffiniPure Goat Anti-Rabbit IgG(H+L) with dilution 1:1000.