

Nur für Forschungszwecke

MYL3 Polyklonaler Antikörper

Katalog-Nr.: 10913-1-AP

2 Publikationen



Allgemeine Informationen

Katalog-Nr.:
10913-1-AP

Größe:
150ul, Konzentration: 550 µg/ml von
Nanodrop und 300 µg/ml durch die
Bradford-Methode mit BSA als
Standard;

Wirt:
Kaninchen

Isotyp:
IgG

Immunogen Katalognummer:
AG1364

GenBank-Zugangsnummer:
BC009790

GeneID (NCBI):
4634

Vollständiger Name:
myosin, light chain 3, alkali;
ventricular, skeletal, slow

Berechnete Masse:
22 kDa

Beobachtete Masse:
22-27 kDa

Reinigungsmethode:

Antigen-Affinitätsreinigung

Empfohlene Verdünnungen:

WB 1:5000-1:50000
IP 0.5-4.0 µg für IP und 1:2000-1:14000
für WB
IHC 1:500-1:2000

Anwendungen

Geprüfte Anwendungen:

FC, IHC, IP, WB, ELISA

In Publikationen genannte Anwendungen:

WB

Getestete Reaktivität:

Human, Maus, Ratte

Zitierte Arten:

Human

Hinweis-IHC: Antigendemaskierung mit TE-Puffer pH 9,0 empfohlen. (*) Wahlweise kann die Antigendemaskierung auch mit Citratpuffer pH 6,0 erfolgen.

Positivkontrollen:

WB: Mausherzgewebe, humanes Herzgewebe, Maus-Skelettmuskulgewebe, Rattenherzgewebe

IP: Mausherzgewebe,

IHC: humanes Herzgewebe, humanes Lungenkarzinomgewebe

Hintergrundinformationen

MYL3, also named as MLC1v, is an essential light chain of myosin that is associated with muscle contraction. It is expressed in ventricular and slow skeletal muscle. MYL3 may serve as a target for caspase-3 in dying cardiomyocytes. Mutations of MYL3 gene cause hypertrophic cardiomyopathy. MYL3 has been identified as potential serum biomarker for drug induced myotoxicity. Great increase in MYL3 serum concentration has been observed in rats with cardiac and skeletal muscle injury. (PMID:21685905)

Bemerkenswerte Veröffentlichungen

Verfasser	Pubmed ID	Journal	Anwendung
Yuan Lin	37159428	J Proteome Res	WB
Addona Terri A TA	21685905	Nat Biotechnol	WB

Lagerung

Lagerungsbedingungen:

Bei -20°C lagern. Nach dem Versand ein Jahr lang stabil

Lagerungspuffer:

PBS mit 0.02% Natriumazid und 50% Glycerin pH 7.3.

Aliquotieren ist nicht notwendig bei -20°C Lagerung

*** 20ul-Größen enthalten 0.1% BSA

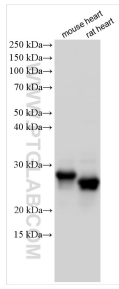
For technical support and original validation data for this product please contact:

T: 1 (888) 4PTGLAB (1-888-478-4522) (toll free in USA), or 1(312) 455-8498 (outside USA)

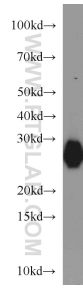
E: proteintech@ptglab.com
W: ptglab.com

This product is exclusively available under Proteintech Group brand and is not available to purchase from any other manufacturer.

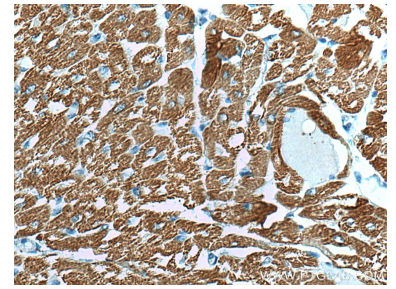
Ausgewählte Validierungsdaten



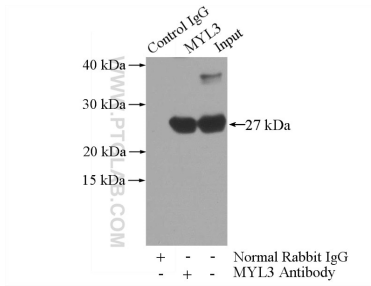
Various lysates were subjected to SDS PAGE followed by western blot with 10913-1-AP (MYL3 antibody) at dilution of 1:30000 incubated at room temperature for 1.5 hours.



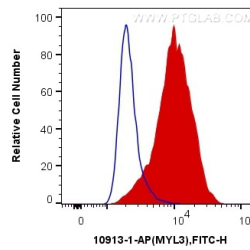
mouse heart tissue were subjected to SDS PAGE followed by western blot with 10913-1-AP (MYL3 antibody) at dilution of 1:1000 incubated at room temperature for 1.5 hours.



Immunohistochemical analysis of paraffin-embedded human heart tissue slide using 10913-1-AP (MYL3 antibody) at dilution of 1:1000 (under 40x lens). Heat mediated antigen retrieval with Tris-EDTA buffer (pH 9.0).



IP Result of anti-MYL3 (IP:10913-1-AP, 3ug; Detection:10913-1-AP 1:7000) with mouse heart tissue lysate 4000ug.



1x10⁶ C2C12 cells were intracellularly stained with 0.4 ug Anti-Human MYL3 (10913-1-AP) and CoraLite®488-Conjugated AffiniPure Goat Anti-Rabbit IgG(H+L) at dilution 1:1000 (red), or 0.4 ug Control Antibody. Cells were fixed with 4% PFA and permeabilized with Flow Cytometry Perm Buffer (PF00011-C).