

Allgemeine Informationen

Katalog-Nr.: 10920-1-AP	GenBank-Zugangsnummer: BC010381	Reinigungsmethode: Antigen-Affinitätsreinigung
Größe: 150ul , Konzentration: 550 µg/ml von Nanodrop und 333 µg/ml durch die Bradford-Methode mit BSA als Standard;	GeneID (NCBI): 9984	Empfohlene Verdünnungen: WB 1:500-1:1000 IP 0.5-4.0 ug für IP und 1:500-1:1000 für WB IHC 1:20-1:200
Wirt: Kaninchen	Vollständiger Name: THO complex 1	
Isotyp: IgG	Berechnete Masse: 84 kDa	
Immunogen Katalognummer: AG1352	Beobachtete Masse: 84 kDa	

Anwendungen

Geprüfte Anwendungen: IHC, IP, WB, ELISA	Positivkontrollen: WB : HEK-293-Zellen, IP : HEK-293-Zellen, IHC : humanes Kolonkarzinomgewebe,
In Publikationen genannte Anwendungen: IF, IHC, WB	
Getestete Reaktivität: Human, Maus, Ratte	
Zitierte Arten: Human, Maus, Ratte	

**Hinweis-IHC: Antigendemaskierung mit TE-Puffer pH 9,0 empfohlen. (*)
Wahlweise kann die Antigendemaskierung auch mit Citratpuffer pH 6,0 erfolgen.**

Hintergrundinformationen

THOC1 (THO complex subunit 1), also known as Tho1, P84, HPR1 or P84N5, is a 657 amino acid nuclear matrix protein and is evolutionarily conserved from yeast to humans. THOC1 contains one death domain and is a component of the heteromultimeric THO/TREX (transcription/export) complex along with THOC2, THOC3, BAT1 and ALY. The THO/TREX complex is recruited to transcribed genes and travels along with RNA polymerase II (Pol II) during elongation, coupling elongating Pol II with RNA splicing and export factors. THOC1 is expressed at high levels in breast cancer cells and at relatively low levels in normal epithelia. A reduction of THOC1 in cancer cell lines results in promoted cancer cell apoptosis and reduced cell proliferation. This suggests that cancer cells are dependent on the high levels of THOC1 expression and therefore THOC1 may be a good target for cancer therapy. This antibody recognizes the 84kd THOC1 protein.

Bemerkenswerte Veröffentlichungen

Verfasser	Pubmed ID	Journal	Anwendung
Lingcai Zhao	36084138	PLoS Pathog	WB,IF
Chenchen Liu	26545775	Biochem Biophys Res Commun	WB, IHC
Le Zhang	35579750	Cell Oncol (Dordr)	WB

Lagerung

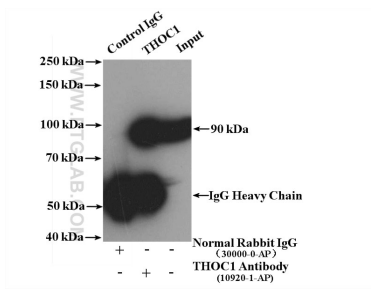
Lagerungsbedingungen:
Bei -20°C lagern. Nach dem Versand ein Jahr lang stabil
Lagerungspuffer:
PBS mit 0.02% Natriumazid und 50% Glycerin pH 7.3.
Aliquotieren ist nicht notwendig bei -20°C Lagerung

***** 20ul-Größen enthalten 0.1% BSA**

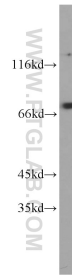
For technical support and original validation data for this product please contact:
T: 1 (888) 4PTGLAB (1-888-478-4522) (toll free in USA), or 1(312) 455-8498 (outside USA)
E: proteintech@ptglab.com
W: ptglab.com

This product is exclusively available under Proteintech Group brand and is not available to purchase from any other manufacturer.

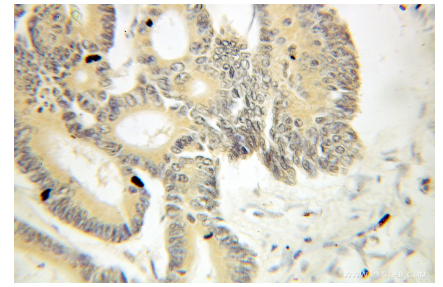
Ausgewählte Validierungsdaten



IP result of anti-THOC1 (IP:10920-1-AP, 4 μ g; Detection:10920-1-AP 1:500) with HEK-293 cells lysate 1600 μ g.



HEK-293 cells were subjected to SDS PAGE followed by western blot with 10920-1-AP (THOC1 antibody) at dilution of 1:500 incubated at room temperature for 1.5 hours.



Immunohistochemical analysis of paraffin-embedded human colon cancer using 10920-1-AP (THOC1 antibody) at dilution of 1:100 (under 10x lens).