

Nur für Forschungszwecke

Cathepsin L Polyklonaler Antikörper



Katalog-Nr.:10938-1-AP

Vorgestelltes Produkt

10 Publikationen

Allgemeine Informationen

Katalog-Nr.: 10938-1-AP	GenBank-Zugangsnummer: BC012612	Reinigungsmethode: Antigen-Affinitätsreinigung
Größe: 150ul , Konzentration: 300 µg/ml von Nanodrop und 147 µg/ml durch die Bradford-Methode mit BSA als Standard;	GeneID (NCBI): 1514	Empfohlene Verdünnungen: WB 1:200-1:1000 IHC 1:50-1:500 IF 1:50-1:500
Wirt: Kaninchen	Vollständiger Name: cathepsin L1	
Isotyp: IgG	Berechnete Masse: 38 kDa	
Immunogen Katalognummer: AG1373	Beobachtete Masse: 36-39 kDa, 29 kDa	

Anwendungen

Geprüfte Anwendungen: IF, IHC, WB, ELISA	Positivkontrollen: WB : A549-Zellen, IHC : humanes Hautgewebe, IF : HepG2-Zellen,
In Publikationen genannte Anwendungen: IF, IHC, WB	
Getestete Reaktivität: Human	
Zitierte Arten: Human	
Hinweis-IHC: Antigenmaskierung mit TE-Puffer pH 9,0 empfohlen. (*) Wahlweise kann die Antigenmaskierung auch mit Citratpuffer pH 6,0 erfolgen.	

Hintergrundinformationen

CTSL1(Cathepsin L1) is also named as CTSL and MEP, belongs to the peptidase C1 family. It is a lysosomal proteinase whose expression is also up-regulated in the skeletal muscle during starvation(PMID:20088826). It plays an intracellular role in normal intestinal epithelial polarization and initiation of neoplasia(PMID:17622569). CTSL1 also improves cardiac function and inhibits cardiac hypertrophy, inflammation, and fibrosis through blocking AKT/GSK3B signaling(PMID:19096818). The full length protein is 38 kDa with a signal peptide, two propeptide and a glycosylation site. It has been detected the 36 kDa, 39 kDa, 29 kDa and 21 kDa in rat gastrocnemius muscle. These forms of cathepsin L could either be attributed to differences in glycosylation or to partial processing of the proenzyme. (PMID:11696001)

Bemerkenswerte Veröffentlichungen

Verfasser	Pubmed ID	Journal	Anwendung
Jana Ihlow	34479499	BMC Infect Dis	IHC
Peng Liu	31632196	Cancer Cell Int	WB
Qiang Dong	34807310	J Cancer Res Clin Oncol	WB

Lagerung

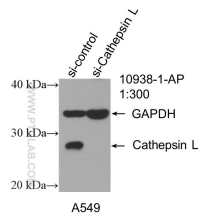
Lagerungsbedingungen:
Bei -20°C lagern. Nach dem Versand ein Jahr lang stabil
Lagerungspuffer:
PBS mit 0.02% Natriumazid und 50% Glycerin pH 7.3.
Aliquotieren ist nicht notwendig bei -20°C Lagerung

*** 20ul-Größen enthalten 0.1% BSA

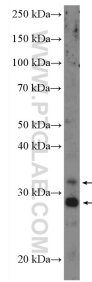
For technical support and original validation data for this product please contact:
T: 1 (888) 4PTGLAB (1-888-478-4522) (toll free in USA), or 1(312) 455-8498 (outside USA)
E: proteintech@ptglab.com
W: ptglab.com

This product is exclusively available under Proteintech Group brand and is not available to purchase from any other manufacturer.

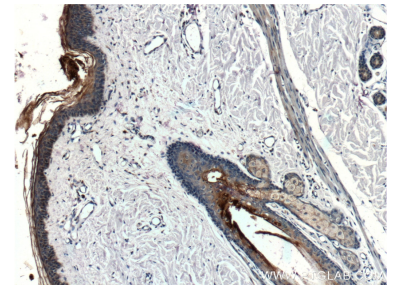
Ausgewählte Validierungsdaten



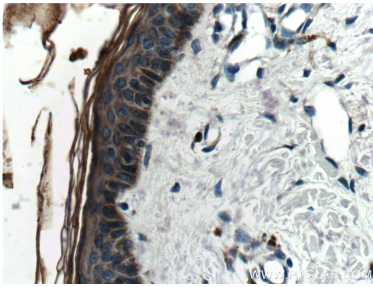
WB result of Cathepsin L antibody (10938-1-AP; 1:300; incubated at room temperature for 1.5 hours) with sh-Control and sh-Cathepsin L transfected A549 cells.



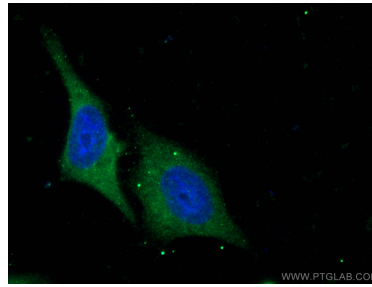
A549 cells were subjected to SDS PAGE followed by western blot with 10938-1-AP (Cathepsin L Antibody) at dilution of 1:300 incubated at room temperature for 1.5 hours.



Immunohistochemical analysis of paraffin-embedded human skin tissue slide using 10938-1-AP (Cathepsin L Antibody) at dilution of 1:200 (under 10x lens).



Immunohistochemical analysis of paraffin-embedded human skin tissue slide using 10938-1-AP (Cathepsin L Antibody) at dilution of 1:200 (under 40x lens).



Immunofluorescent analysis of (-20°C Ethanol) fixed HepG2 cells using 10938-1-AP (Cathepsin L antibody), at dilution of 1:100 and CoraLite®488-Conjugated AffiniPure Goat Anti-Rabbit IgG(H+L).