

Nur für Forschungszwecke

CRH/CRF Polyklonaler Antikörper

Katalog-Nr.: 10944-1-AP

20 Publikationen



Allgemeine Informationen

Katalog-Nr.:
10944-1-AP

Größe:
150ul, Konzentration: 1200 µg/ml von 1392
Nanodrop und 400 µg/ml durch die
Bradford-Methode mit BSA als
Standard;

Wirt:
Kaninchen

Isotyp:
IgG

Immunogen Katalognummer:
AG1371

GenBank-Zugangsnummer:
BC011031

GeneID (NCBI):

Vollständiger Name:
CRH/CRF

Berechnete Masse:
21 kDa

Beobachtete Masse:
35-38 kDa

Reinigungsmethode:

Antigen-Affinitätsreinigung

Empfohlene Verdünnungen:

WB 1:200-1:1000

IHC 1:50-1:500

IF 1:50-1:500

Anwendungen

Geprüfte Anwendungen:

IF, IHC, WB, ELISA

In Publikationen genannte Anwendungen:

IF, IHC, WB

Getestete Reaktivität:

Human, Maus, Ratte

Zitierte Arten:

Hausschwein, Human, Maus, Ratte, Zebrafisch,
Präriewühlmaus (*Microtus Ochrogaster*)

**Hinweis-IHC: Antigendemaskierung mit TE-
Puffer pH 9,0 empfohlen. (*) Wahlweise
kann die Antigendemaskierung auch mit
Citratpuffer pH 6,0 erfolgen.**

Positivkontrollen:

WB: humanes Hirngewebe, Rattenhirngewebe

IHC: humanes Pankreaskarzinomgewebe,
Maushirngewebe

IF: Maushirngewebe,

Hintergrundinformationen

CRH, also called CRF or corticoliberin, is a peptide hormone and neurotransmitter involved in the stress response. Marked reduction in this protein has been observed in association with Alzheimer disease. In addition to production in the hypothalamus, this protein is also synthesized in peripheral tissues, such as T lymphocytes and is highly expressed in the placenta. In the placenta it is a marker that determines the length of gestation and the timing of parturition and delivery.

Bemerkenswerte Veröffentlichungen

Verfasser	Pubmed ID	Journal	Anwendung
Fengmei Wei	36150631	Peptides	IHC
Zhihui Gai	27538655	J Neurol Sci	WB, IF
Hwan-Deuk Kim	36359090	Animals (Basel)	WB

Lagerung

Lagerungsbedingungen:

Bei -20°C lagern. Nach dem Versand ein Jahr lang stabil

Lagerungspuffer:

PBS mit 0.02% Natriumazid und 50% Glycerin pH 7.3.

Aliquotieren ist nicht notwendig bei -20°C Lagerung

*** 20ul-Größen enthalten 0.1% BSA

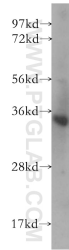
For technical support and original validation data for this product please contact:

T: 1 (888) 4PTGLAB (1-888-478-4522) (toll free
in USA), or 1(312) 455-8498 (outside USA)

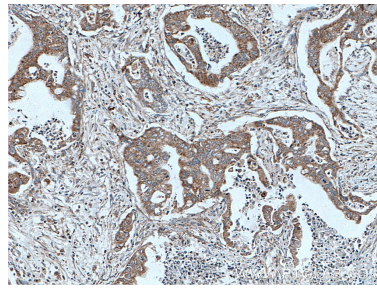
E: proteintech@ptglab.com
W: ptglab.com

This product is exclusively available under Proteintech Group brand and is not available to purchase from any other manufacturer.

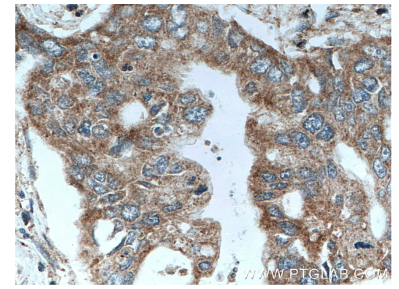
Ausgewählte Validierungsdaten



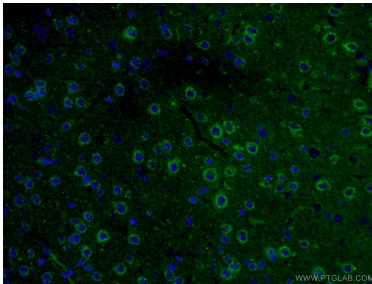
human brain tissue were subjected to SDS PAGE followed by western blot with 10944-1-AP (CRH/CRF antibody) at dilution of 1:400 incubated at room temperature for 1.5 hours.



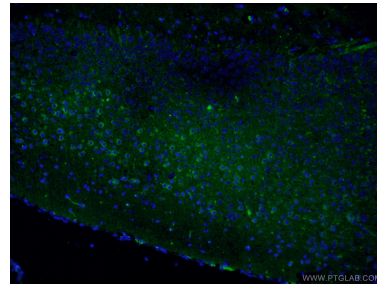
Immunohistochemical analysis of paraffin-embedded human pancreas cancer tissue slide using 10944-1-AP (CRH/CRF antibody) at dilution of 1:200 (under 10x lens. Heat mediated antigen retrieval with Tris-EDTA buffer (pH 9.0).



Immunohistochemical analysis of paraffin-embedded human pancreas cancer tissue slide using 10944-1-AP (CRH/CRF antibody) at dilution of 1:200 (under 40x lens. Heat mediated antigen retrieval with Tris-EDTA buffer (pH 9.0).



Immunofluorescent analysis of (4% PFA) fixed mouse brain tissue using 10944-1-AP (CRH/CRF antibody) at dilution of 1:100 and CoraLite488-Conjugated AffiniPure Goat Anti-Rabbit IgG(H+L).



Immunofluorescent analysis of (4% PFA) fixed mouse brain tissue using 10944-1-AP (CRH/CRF antibody) at dilution of 1:100 and CoraLite488-Conjugated AffiniPure Goat Anti-Rabbit IgG(H+L).