

Nur für Forschungszwecke

SUB1 Polyklonaler Antikörper

Katalog-Nr.:10948-2-AP

Vorgestelltes Produkt

2 Publikationen



Allgemeine Informationen

Katalog-Nr.: 10948-2-AP	GenBank-Zugangsnummer: BC009610	Reinigungsmethode: Antigen-Affinitätsreinigung
Größe: 150ul , Konzentration: 850 µg/ml von Nanodrop und 467 µg/ml durch die Bradford-Methode mit BSA als Standard;	GeneID (NCBI): 10923	Empfohlene Verdünnungen: WB 1:500-1:2000 IHC 1:50-1:500 IF 1:50-1:500
Wirt: Kaninchen	Vollständiger Name: SUB1 homolog (S. cerevisiae)	
Isotyp: IgG	Berechnete Masse: 14 kDa	
Immunogen Katalognummer: AG1390	Beobachtete Masse: 18-23 kDa	

Anwendungen

Geprüfte Anwendungen: IF, IHC, WB, ELISA	Positivkontrollen: WB : HeLa-Zellen, A549-Zellen
In Publikationen genannte Anwendungen: IHC, WB	IHC : humanes Pankreaskarzinomgewebe,
Getestete Reaktivität: Human, Maus, Ratte	IF : HeLa-Zellen,
Zitierte Arten: Maus	
Hinweis-IHC: Antigenmaskierung mit TE-Puffer pH 9,0 empfohlen. (*) Wahlweise kann die Antigenmaskierung auch mit Citratpuffer pH 6,0 erfolgen.	

Hintergrundinformationen

SUB1 gene encodes activated RNA polymerase II transcriptional coactivator p15, also termed as positive cofactor 4 (PC4) or p14. SUB1 is a sort of general coactivator that functions in assembling and stabilization of transcription complex. It has DNA binding activity and is localized in the nucleus, multiple modification sites of phosphorylation or acetylation may turn it appear slightly shifted molecular weight. Catalog#10948-2-AP is a rabbit polyclonal antibody raised against full-length human SUB1. This antibody recognize 14-16 kDa (P14 or P15), 20 kDa(phospho form) and 30 kDa (Dimer form).

Bemerkenswerte Veröffentlichungen

Verfasser	Pubmed ID	Journal	Anwendung
Li Lu L	22807403	J Cell Biochem	WB
Ho Jiawei J	19086899	J Proteome Res	WB,IHC

Lagerung

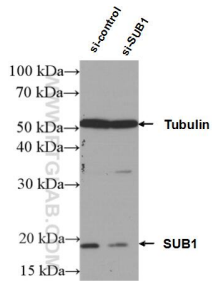
Lagerungsbedingungen:
Bei -20°C lagern. Nach dem Versand ein Jahr lang stabil
Lagerungspuffer:
PBS mit 0.02% Natriumazid und 50% Glycerin pH 7.3.
Aliquotieren ist nicht notwendig bei -20°C Lagerung

*** 20ul-Größen enthalten 0.1% BSA

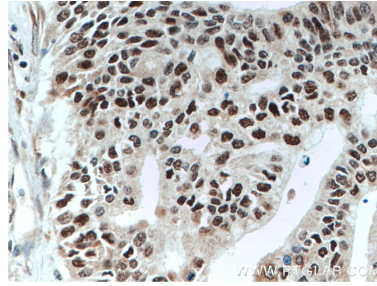
For technical support and original validation data for this product please contact:
T: 1 (888) 4PTGLAB (1-888-478-4522) (toll free in USA), or 1(312) 455-8498 (outside USA)
E: proteintech@ptglab.com
W: ptglab.com

This product is exclusively available under Proteintech Group brand and is not available to purchase from any other manufacturer.

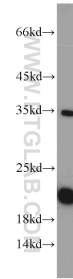
Ausgewählte Validierungsdaten



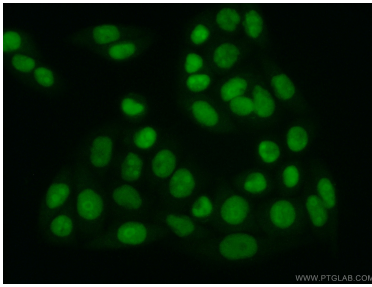
WB result of SUB1 antibody (10948-2-AP; 1:3000; incubated at room temperature for 1.5 hours) with sh-Control and sh-SUB1 transfected A549 cells.



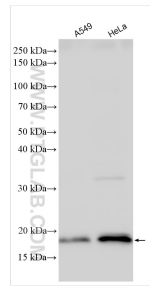
Immunohistochemical analysis of paraffin-embedded human pancreas cancer tissue slide using 10948-2-AP (SUB1 antibody) at dilution of 1:200 (under 40x lens. Heat mediated antigen retrieval with Tris-EDTA buffer (pH 9.0).



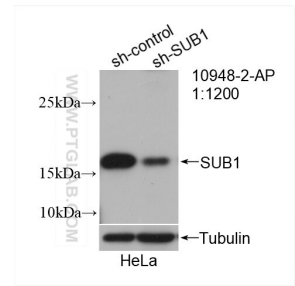
HeLa cells were subjected to SDS PAGE followed by western blot with 10948-2-AP (SUB1 antibody) at dilution of 1:1000 incubated at room temperature for 1.5 hours.



Immunofluorescent analysis of (10% Formaldehyde) fixed HeLa cells using 10948-2-AP (SUB1 antibody) at dilution of 1:50 and Alexa Fluor 488-conjugated AffiniPure Goat Anti-Rabbit IgG(H+L).



Various lysates were subjected to SDS PAGE followed by western blot with 10948-2-AP (SUB1 antibody) at dilution of 1:2000 incubated at room temperature for 1.5 hours.



WB result of SUB1 antibody (10948-2-AP; 1:1200; incubated at room temperature for 1.5 hours) with sh-Control and sh-SUB1 transfected HeLa cells.