

## Allgemeine Informationen

<b>Katalog-Nr.:</b> 10956-1-AP	<b>GenBank-Zugangsnummer:</b> BC009428	<b>Reinigungsmethode:</b> Antigen-Affinitätsreinigung
<b>Größe:</b> 150ul, Konzentration: 700 µg/ml von Nanodrop;	<b>GeneID (NCBI):</b> 51024	<b>Empfohlene Verdünnungen:</b> WB 1:500-1:3000 IP 0.5-4.0 µg für IP und 1:500-1:1000 für WB
<b>Wirt:</b> Kaninchen	<b>Vollständiger Name:</b> fission 1 (mitochondrial outer membrane) homolog ( <i>S. cerevisiae</i> )	<b>IHC 1:50-1:500</b> <b>IF 1:50-1:200</b>
<b>Isotyp:</b> IgG	<b>Berechnete Masse:</b> 17 kDa	
<b>Immunogen Katalognummer:</b> AG1409	<b>Beobachtete Masse:</b> 17 kDa	

## Anwendungen

### Geprüfte Anwendungen:

IF, IHC, IP, WB, ELISA

### In Publikationen genannte Anwendungen:

CoIP, IF, IHC, IP, WB

### Getestete Reaktivität:

Hausschwein, Human, Maus, Ratte

### Zitierte Arten:

Eichhörnchen, Hamster, Hausschwein, Human, Maus, Ratte, Rind, Ziege

**Hinweis-IHC: Antigenmaskierung mit TE-Puffer pH 9,0 empfohlen. (\*) Wahlweise kann die Antigenmaskierung auch mit Citratpuffer pH 6,0 erfolgen.**

### Positivkontrollen:

**WB:** HeLa-Zellen, Hausschwein-Hirngewebe, HEK-293-Zellen, HepG2-Zellen, Jurkat-Zellen, Mausherzgewebe, Maushirngewebe, Mausmilzgewebe, PC-12-Zellen, Rattenherzgewebe, Rattenhirngewebe, Rattenmilzgewebe, SH-SY5Y-Zellen

**IP:** HeLa-Zellen,

**IHC:** Rattenhirngewebe, humanes Hirngewebe

**IF:** Hepa1-6-Zellen, HepG2-Zellen

## Hintergrundinformationen

Fis1 (fission 1) is an integral mitochondrial outer membrane protein that participates in mitochondrial fission by interacting with dynamin-related protein 1 (Drp1). Excessive mitochondrial fission is associated with the pathology of a number of neurodegenerative or neurodevelopmental diseases. Increased expression of Fis1 has been found in Huntington's disease (HD)-affected brain, Alzheimer's disease (AD) patients, and autism spectrum disorder. This antibody was raised against the full-length of human Fis1 protein, and recognizes endogenous Fis1 protein in various lysates. (PMID: 21257639, 21459773, 23333625)

## Bemerkenswerte Veröffentlichungen

Verfasser	Pubmed ID	Journal	Anwendung
Xudong Yao	30273654	Pharmacol Res	WB
Maria Manczak	27677309	Hum Mol Genet	IF
Na Jiang	32975326	Cell Prolif	WB,IHC

## Lagerung

### Lagerungsbedingungen:

Bei -20°C lagern. Nach dem Versand ein Jahr lang stabil

### Lagerungspuffer:

PBS mit 0.02% Natriumazid und 50% Glycerin pH 7.3.

Aliquotieren ist nicht notwendig bei -20°C Lagerung

**\*\*\* 20ul-Größen enthalten 0.1% BSA**

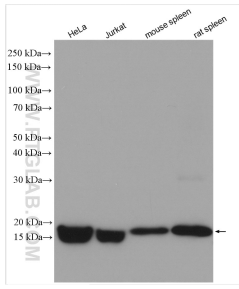
For technical support and original validation data for this product please contact:

T: 1 (888) 4PTGLAB (1-888-478-4522) (toll free in USA), or 1(312) 455-8498 (outside USA)

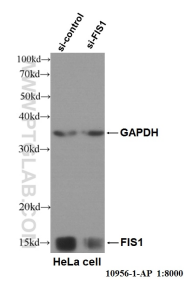
E: [proteintech@ptglab.com](mailto:proteintech@ptglab.com)  
W: [ptglab.com](http://ptglab.com)

**This product is exclusively available under Proteintech Group brand and is not available to purchase from any other manufacturer.**

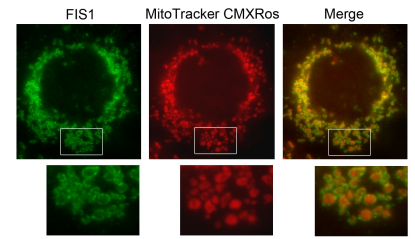
## Ausgewählte Validierungsdaten



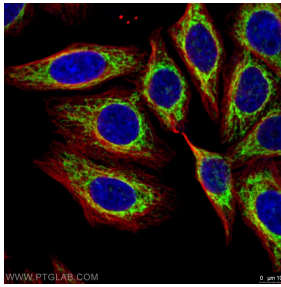
Various lysates were subjected to SDS PAGE followed by western blot with 10956-1-AP (FIS1 antibody) at dilution of 1:1500 incubated at room temperature for 1.5 hours.



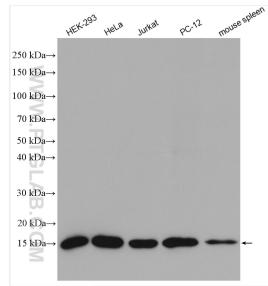
WB result of FIS1 antibody (10956-1-AP, 1:8,000) with si-Control and si-FIS1 transfected HeLa cells.



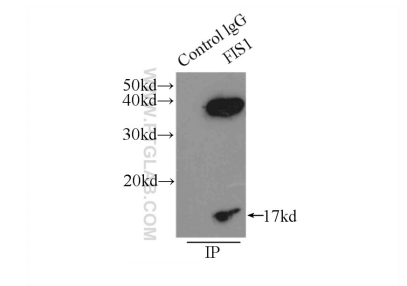
IF result of anti-FIS1(10956-1-AP,1:100) with Hepa1-6 cell by Dr. Steven Eugene Smith. Mitochondrion outer membrane (Green) Stain.



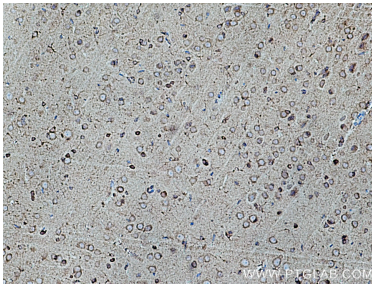
Immunofluorescent analysis of (4% PFA) fixed HepG2 cells using 10956-1-AP (FIS1 antibody) at dilution of 1:100 and Alexa Fluor 488-Conjugated AffiniPure Goat Anti-Rabbit IgG(H+L).



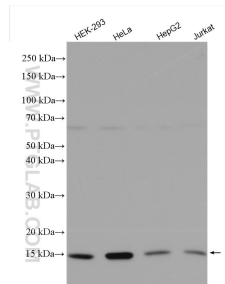
Various lysates were subjected to SDS PAGE followed by western blot with 10956-1-AP (FIS1 antibody) at dilution of 1:7000 incubated at room temperature for 1.5 hours.



IP Result of anti-FIS1 (IP:10956-1-AP, 3ug; Detection:10956-1-AP 1:500) with HeLa cells lysate 3000ug.



Immunohistochemical analysis of paraffin-embedded rat brain tissue slide using 10956-1-AP (FIS1 antibody) at dilution of 1:200 (under 10x lens). Heat mediated antigen retrieval with Tris-EDTA buffer (pH 9.0).



Various lysates were subjected to SDS PAGE followed by western blot with 10956-1-AP (FIS1 antibody) at dilution of 1:10000 incubated at room temperature for 1.5 hours.