

Nur für Forschungszwecke

PSMG2 Polyklonaler Antikörper

Katalog-Nr.:10959-1-AP



Allgemeine Informationen

| | | |
|---|--|--|
| Katalog-Nr.: 10959-1-AP | GenBank-Zugangsnummer: BC013356 | Reinigungsmethode: Antigen-Affinitätsreinigung |
| Größe: 150ul , Konzentration: 400 µg/ml von Nanodrop und 267 µg/ml durch die Bradford-Methode mit BSA als Standard; | GeneID (NCBI): 56984 | Empfohlene Verdünnungen: WB 1:500-1:3000 IHC 1:20-1:200 |
| Wirt: Kaninchen | Vollständiger Name: proteasome (prosome, macropain) assembly chaperone 2 | |
| Isotyp: IgG | Berechnete Masse: 29 kDa | |
| Immunogen Katalognummer: AG1400 | Beobachtete Masse: 29 kDa | |

Anwendungen

| | |
|---|---|
| Geprüfte Anwendungen: IHC, WB, ELISA | Positivkontrollen: WB : HeLa-Zellen, HepG2-Zellen, Jurkat-Zellen IHC : humanes Prostatakarzinomgewebe, |
| Getestete Reaktivität: Human, Maus, Ratte | |
| Hinweis-IHC: Antigenmaskierung mit TE-Puffer pH 9,0 empfohlen. (*) Wahlweise kann die Antigenmaskierung auch mit Citratpuffer pH 6,0 erfolgen. | |

Hintergrundinformationen

Proteasome assembly chaperone 2 (PSMG2), also named as Hepatocellular carcinoma-susceptibility protein 3, Tumor necrosis factor superfamily member 5-induced protein 1. It has a function as a chaperone protein which promotes assembly of the 20S proteasome as part of a heterodimer with PSMG1. The PSMG1-PSMG2 heterodimer binds to the PSMA5 and PSMA7 proteasome subunits, promotes assembly of the proteasome alpha subunits into the heteroheptameric alpha ring and prevents alpha ring dimerization. It is widely expressed with highest levels in lung, brain and colon, moderately expressed in muscle, stomach, spleen and heart and weakly expressed in small intestine, pancreas and liver, highly expressed in hepatocellular carcinomas with low levels in surrounding liver tissue. Molecular mass of PSMG2 is 29kD.

Lagerung

Lagerungsbedingungen:
Bei -20°C lagern. Nach dem Versand ein Jahr lang stabil
Lagerungspuffer:
PBS mit 0.02% Natriumazid und 50% Glycerin pH 7.3.
Aliquotieren ist nicht notwendig bei -20°C Lagerung

*** 20ul-Größen enthalten 0.1% BSA

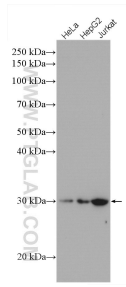
For technical support and original validation data for this product please contact:

T: 1 (888) 4PTGLAB (1-888-478-4522) (toll free in USA), or 1(312) 455-8498 (outside USA)

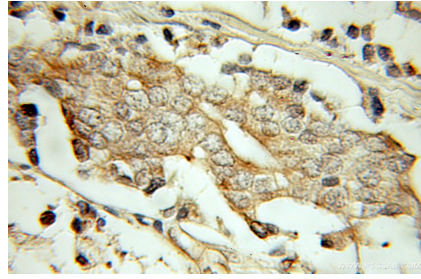
E: proteintech@ptglab.com
W: ptglab.com

This product is exclusively available under Proteintech Group brand and is not available to purchase from any other manufacturer.

Ausgewählte Validierungsdaten



Various lysates were subjected to SDS PAGE followed by western blot with 10959-1-AP (PSMG2 antibody) at dilution of 1:1500 incubated at room temperature for 1.5 hours.



Immunohistochemical analysis of paraffin-embedded human prostate cancer using 10959-1-AP (PSMG2 antibody) at dilution of 1:50 (under 10x lens).