

Allgemeine Informationen

Katalog-Nr.:
10967-1-AP

Größe:
150ul , Konzentration: 400 µg/ml von
Nanodrop und 253 µg/ml durch die
Bradford-Methode mit BSA als
Standard;

Wirt:
Kaninchen

Isotyp:
IgG

Immunogen Katalognummer:
AG1416

GenBank-Zugangsnummer:
BC010385

GeneID (NCBI):
8161

Vollständiger Name:
coilin

Berechnete Masse:
62 aa, 6 kDa

Beobachtete Masse:
80 kDa

Reinigungsmethode:

Antigen-Affinitätsreinigung

Empfohlene Verdünnungen:

WB 1:5000-1:50000

IP 0.5-4.0 ug für IP und 1:500-1:1000
für WB

IHC 1:20-1:200

IF 1:50-1:500

Anwendungen

Geprüfte Anwendungen:

FC, IF, IHC, IP, WB, ELISA

In Publikationen genannte Anwendungen:

CoIP, IF, WB

Getestete Reaktivität:

Human

Zitierte Arten:

Human

Hinweis-IHC: Antigendemaskierung mit TE-Puffer pH 9,0 empfohlen. (*) Wahlweise kann die Antigendemaskierung auch mit Citratpuffer pH 6,0 erfolgen.

Positivkontrollen:

WB : HEK-293-Zellen, humanes Hirngewebe, Jurkat-Zellen, K-562-Zellen

IP : HEK-293-Zellen,

IHC : humanes Prostatakarzinomgewebe, humanes Hodengewebe

IF : HeLa-Zellen,

Hintergrundinformationen

The nuclear coiled body(CBs) and nuclear structures known as gems contain high concentrations of the survival motor neurons (SMN) protein complex. CBs and gems often colocalize, and communication between them is mediated by COIL. COIL is a component of the CBS which are involved in the function or assembly/disassembly of nucleoplasmic snRNPs. During mitosis, CBs disassemble, coinciding with a mitotic-specific phosphorylation of p80 coilin, and symmetrical dimethylation of the COIL RG box motif is a molecular switch that determines whether the SMN complex forms gems or becomes incorporated into CBs

Bemerkenswerte Veröffentlichungen

Verfasser	Pubmed ID	Journal	Anwendung
Andrea Pawellek	28884683	Elife	IF
Yuhong Zhang	34628513	J Mol Med (Berl)	WB,IF
Andrea Pawellek	25281741	J Biol Chem	IF

Lagerung

Lagerungsbedingungen:

Bei -20°C lagern. Nach dem Versand ein Jahr lang stabil

Lagerungspuffer:

PBS mit 0.02% Natriumazid und 50% Glycerin pH 7.3.

Aliquotieren ist nicht notwendig bei -20°C Lagerung

***** 20ul-Größen enthalten 0.1% BSA**

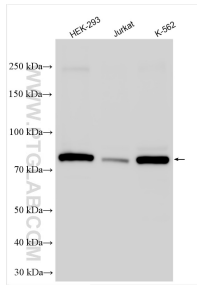
For technical support and original validation data for this product please contact:

T: 1 (888) 4PTGLAB (1-888-478-4522) (toll free
in USA), or 1(312) 455-8498 (outside USA)

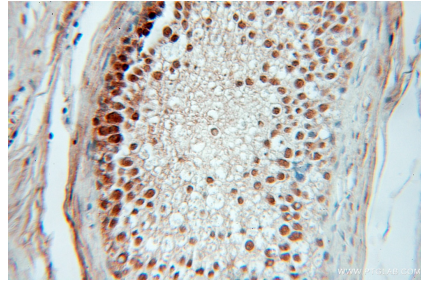
E: proteintech@ptglab.com
W: ptglab.com

This product is exclusively available under Proteintech Group brand and is not available to purchase from any other manufacturer.

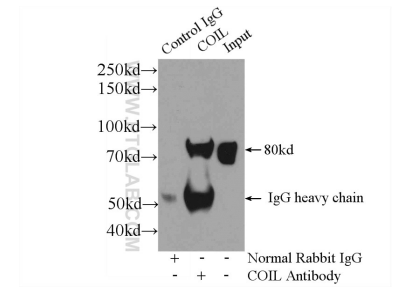
Ausgewählte Validierungsdaten



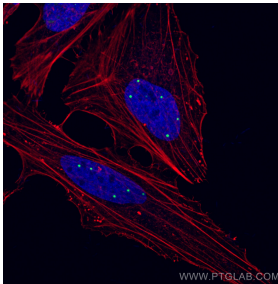
Various lysates were subjected to SDS PAGE followed by western blot with 10967-1-AP (Coilin antibody) at dilution of 1:15000 incubated at room temperature for 1.5 hours.



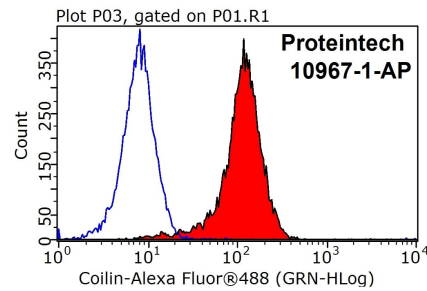
Immunohistochemical analysis of paraffin-embedded human prostate cancer using 10967-1-AP (Coilin antibody) at dilution of 1:100 (under 10x lens).



IP Result of anti-Coilin (IP:10967-1-AP, 3ug; Detection:10967-1-AP 1:500) with HEK-293 cells lysate 1000ug.



Immunofluorescent analysis of (4% PFA) fixed HeLa cells using Coilin antibody (10967-1-AP) at dilution of 1:200 and CoraLite®488-Conjugated AffiniPure Goat Anti-Rabbit IgG(H+L), CL594-Phalloidin (red).



1x10⁶ HEK-293T cells were stained with 0.2ug Coilin antibody (10967-1-AP, red) and control antibody (blue). Fixed with 90% MeOH blocked with 3% BSA (30 min). Alexa Fluor 488-conjugated AffiniPure Goat Anti-Rabbit IgG(H+L) with dilution 1:1000.