

Nur für Forschungszwecke

# PABPC1, PABP Polyklonaler Antikörper



Katalog-Nr.: 10970-1-AP

Vorgestelltes Produkt

14 Publikationen

## Allgemeine Informationen

<b>Katalog-Nr.:</b> 10970-1-AP	<b>GenBank-Zugangsnummer:</b> BC015958	<b>Reinigungsmethode:</b> Antigen-Affinitätsreinigung
<b>Größe:</b> 150ul, Konzentration: 500 µg/ml von Nanodrop;	<b>GeneID (NCBI):</b> 26986	<b>Empfohlene Verdünnungen:</b> WB 1:1000-1:5000 IP 0.5-4.0 µg für IP und 1:500-1:1000 für WB
<b>Wirt:</b> Kaninchen	<b>Vollständiger Name:</b> poly(A) binding protein, cytoplasmic 1	<b>IHC 1:20-1:200</b> <b>IF 1:10-1:100</b>
<b>Isotyp:</b> IgG	<b>Berechnete Masse:</b> 71 kDa	
<b>Immunogen Katalognummer:</b> AG1422	<b>Beobachtete Masse:</b> 71 kDa	

## Anwendungen

**Geprüfte Anwendungen:**  
FC, IF, IHC, IP, WB, ELISA

**In Publikationen genannte Anwendungen:**  
IF, IHC, IP, WB

**Getestete Reaktivität:**  
Human, Maus, Ratte

**Zitierte Arten:**  
Human, Maus, Ratte

**Hinweis-IHC: Antigenmaskierung mit TE-Puffer pH 9,0 empfohlen. (\*) Wahlweise kann die Antigenmaskierung auch mit Citratpuffer pH 6,0 erfolgen.**

**Positivkontrollen:**

**WB:** HCT 116-Zellen, A549-Zellen, HeLa-Zellen, HT-29-Zellen, Maushodengewebe, MCF-7-Zellen, NCI-H1299-Zellen, PC-3-Zellen, Rattenhodengewebe

**IP:** Maushodengewebe,

**IHC:** humanes Pankreasgewebe, humanes Hodengewebe

**IF:** MCF-7-Zellen,

## Hintergrundinformationen

The poly(A)-binding protein (PABP), which is found complexed to the 3-prime poly(A) tail of eukaryotic mRNA, is required for poly(A) shortening and translation initiation [PMID: 21989405]. Polyadenylate-binding protein 1 (PABPC1) is a cytoplasmic-nuclear shuttling protein important for protein translation initiation, and both RNA processing and stability. In the cytoplasm, PABPC1 binds to the 3' poly(A) tail of eukaryotic mRNAs through its RNA-recognition motifs (RRM) and interacts with the N-terminus of eIF4G, part of the eIF4F complex associated with the 5' cap structure [PMID:20009508, 17381337].

## Bemerkenswerte Veröffentlichungen

Verfasser	Pubmed ID	Journal	Anwendung
S Prpar Mihevc	27665936	Sci Rep	WB,IF
Rhea Nadkarni	36129453	J Exp Med	WB
Qianqian Yang	36434041	Exp Mol Med	WB

## Lagerung

**Lagerungsbedingungen:**

Bei -20°C lagern. Nach dem Versand ein Jahr lang stabil

**Lagerungspuffer:**

PBS mit 0.02% Natriumazid und 50% Glycerin pH 7.3.

Aliquotieren ist nicht notwendig bei -20°C Lagerung

\*\*\* 20ul-Größen enthalten 0.1% BSA

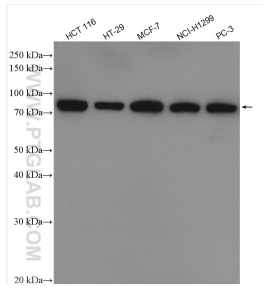
For technical support and original validation data for this product please contact:

T: 1 (888) 4PTGLAB (1-888-478-4522) (toll free in USA), or 1(312) 455-8498 (outside USA)

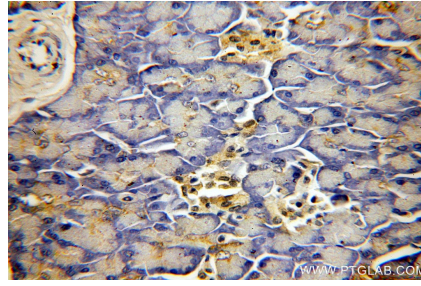
E: proteintech@ptglab.com  
W: ptglab.com

This product is exclusively available under Proteintech Group brand and is not available to purchase from any other manufacturer.

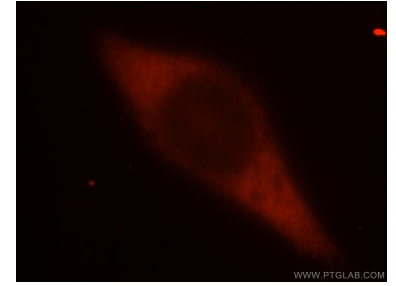
## Ausgewählte Validierungsdaten



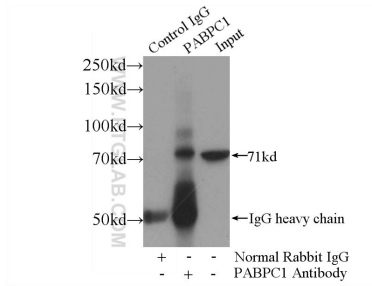
Various lysates were subjected to SDS PAGE followed by western blot with 10970-1-AP (PABPC1,PABP antibody) at dilution of 1:2500 incubated at room temperature for 1.5 hours.



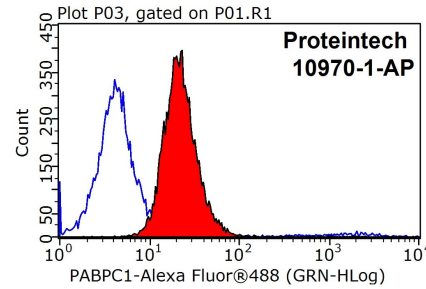
Immunohistochemical analysis of paraffin-embedded human pancreas using 10970-1-AP (PABPC1,PABP antibody) at dilution of 1:50 (under 40x lens).



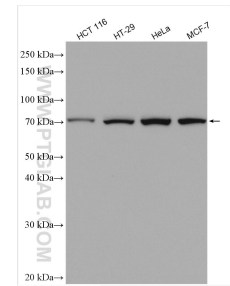
Immunofluorescent analysis of MCF-7 cells, using PABPC1 antibody 10970-1-AP at 1:25 dilution and Rhodamine-labeled goat anti-rabbit IgG (red).



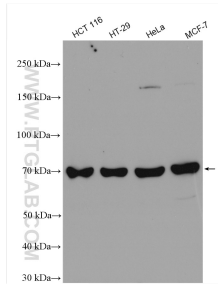
IP Result of anti-PABPC1,PABP (IP:10970-1-AP, 4ug; Detection:10970-1-AP 1:700) with mouse testis tissue lysate 4000ug.



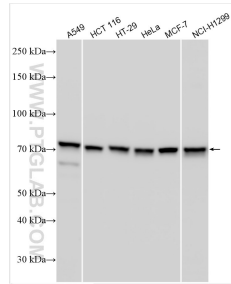
1X10<sup>6</sup> MCF-7 cells were stained with 0.2ug PABPC1,PABP antibody (10970-1-AP, red) and control antibody (blue). Fixed with 90% MeOH blocked with 3% BSA (30 min). Alexa Fluor 488-conjugated AffiniPure Goat Anti-Rabbit IgG(H+L) with dilution 1:1000.



Various lysates were subjected to SDS PAGE followed by western blot with 10970-1-AP (PABPC1,PABP antibody) at dilution of 1:6000 incubated at room temperature for 1.5 hours.



Various lysates were subjected to SDS PAGE followed by western blot with 10970-1-AP (PABPC1,PABP antibody) at dilution of 1:6000 incubated at room temperature for 1.5 hours.



Various lysates were subjected to SDS PAGE followed by western blot with 10970-1-AP (PABPC1,PABP antibody) at dilution of 1:8000 incubated at room temperature for 1.5 hours.