

Nur für Forschungszwecke

Fc Epsilon RI Alpha Polyklonaler Antikörper



Katalog-Nr.:10980-1-AP

7 Publikationen

Allgemeine Informationen

Katalog-Nr.: 10980-1-AP	GenBank-Zugangsnummer: BC015195	Reinigungsmethode: Antigen-Affinitätsreinigung
Größe: 150ul , Konzentration: 350 µg/ml von Nanodrop;	GeneID (NCBI): 2205	Empfohlene Verdünnungen: WB 1:1000-1:4000
Wirt: Kaninchen	Vollständiger Name: Fc fragment of IgE, high affinity I, receptor for; alpha polypeptide	
Isotyp: IgG	Berechnete Masse: 30 kDa	
Immunogen Katalognummer: AG1398	Beobachtete Masse: 55-70 kDa	

Anwendungen

Geprüfte Anwendungen: WB, ELISA	Positivkontrollen: WB : Rattenmilzgewebe, humanes Milzgewebe, PC-3-Zellen, RAW 264.7-Zellen
In Publikationen genannte Anwendungen: IF, IHC, WB	
Getestete Reaktivität: Human, Maus, Ratte	
Zitierte Arten: Human, Maus	

Hintergrundinformationen

Fc fragment of IgE, high affinity I, receptor for, alpha polypeptide, also known as high affinity immunoglobulin epsilon receptor subunit alpha, FCER1A and FCE1A, is a single-pass type I membrane protein which contains 2 immunoglobulin-like domains. FCER1A is a subunit of the IgE receptor, which is composed of one glycosylated alpha (FCER1A), one beta (FCER1B), and two gamma (FCER1G) subunits. The high affinity IgE receptor plays a central role in allergic disease, coupling allergen and mast cells to initiate the inflammatory and immediate hypersensitivity responses that are characteristic of disorders such as hay fever and asthma. The calculated molecular weight of FCER1A is 30 kDa, the 55- to 70-kDa bands detected by this antibody are probably caused by heterogeneous glycosylation (PMID: 11344350; 12671054).

Bemerkenswerte Veröffentlichungen

Verfasser	Pubmed ID	Journal	Anwendung
Yunsheng Liang	31251950	J Allergy Clin Immunol	WB
Hongmei Zhao	34158869	Theranostics	WB
Chi Geng	35108660	Transl Res	WB

Lagerung

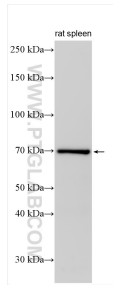
Lagerungsbedingungen:
Bei -20°C lagern. Nach dem Versand ein Jahr lang stabil
Lagerungspuffer:
PBS mit 0.02% Natriumazid und 50% Glycerin pH 7.3.
Aliquotieren ist nicht notwendig bei -20°C Lagerung

*** 20ul-Größen enthalten 0.1% BSA

For technical support and original validation data for this product please contact:
T: 1 (888) 4PTGLAB (1-888-478-4522) (toll free in USA), or 1(312) 455-8498 (outside USA)
E: proteintech@ptglab.com
W: ptglab.com

This product is exclusively available under Proteintech Group brand and is not available to purchase from any other manufacturer.

Ausgewählte Validierungsdaten



rat spleen tissue was subjected to SDS PAGE followed by western blot with 10980-1-AP (Fc Epsilon RI Alpha antibody) at dilution of 1:2000 incubated at room temperature for 1.5 hours.